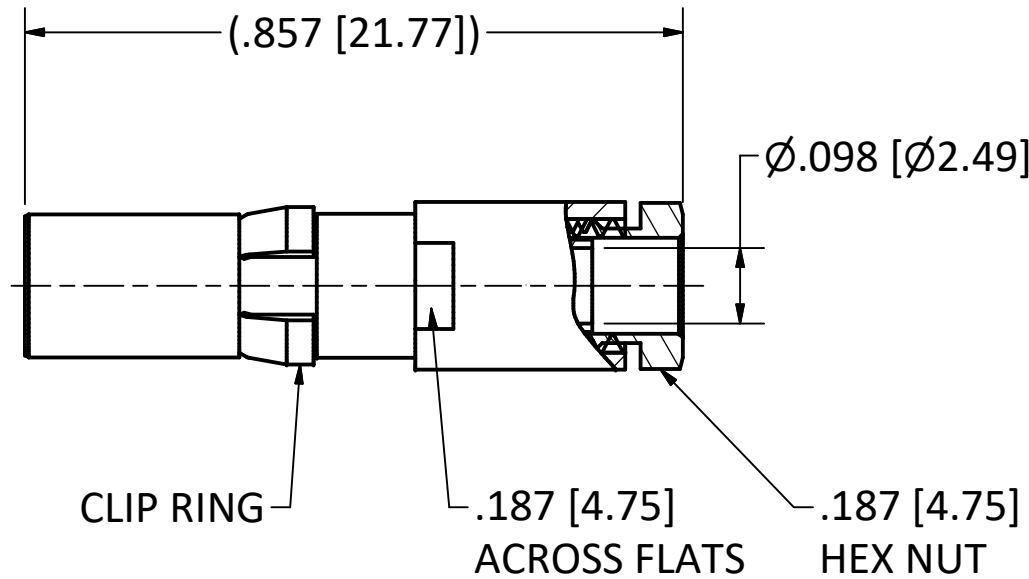
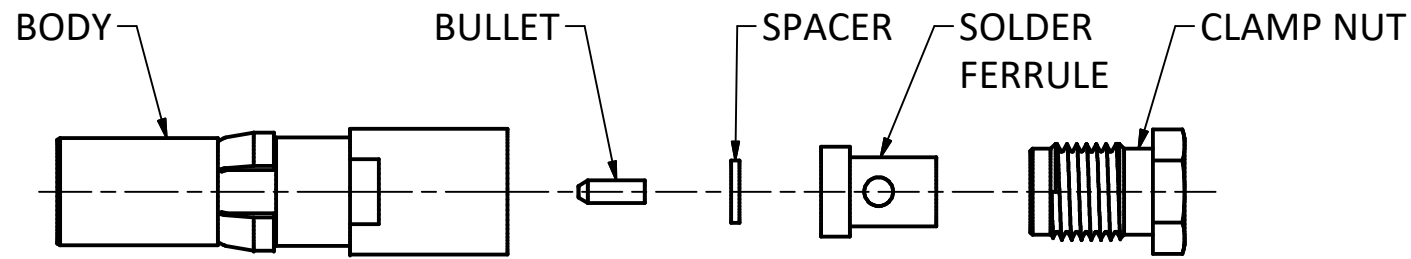


4

3

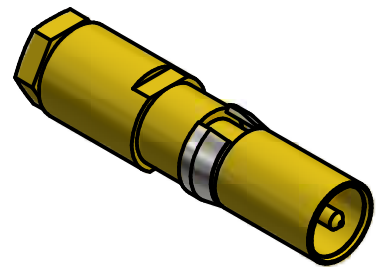
2

1



NOTES:

- 1. SPECIFICATIONS PER IDS-26.
 - 2. BULLET, SPACER, SOLDER FERRULE, AND CLAMP NUT SHIPPED LOOSE.
 - 3. ACCOMMODATES RG-316 DOUBLE SHIELD (M17/152) CABLE.
- HOUSING:** DIN 41612, SIZE 8 CAVITY.



SCALE 2.5 : 1

THE INFORMATION AND DESIGNS DISCLOSED IN THIS DOCUMENT ARE CONFIDENTIAL AND/OR PROPRIETARY TO THE PHOENIX COMPANY OF CHICAGO INC. AND MAY NOT BE USED FOR MANUFACTURING, REPRODUCED, DISCLOSED TO OTHERS OR FOR ANY OTHER PURPOSE WITHOUT THE EXPRESS WRITTEN CONSENT OF THE PHOENIX COMPANY OF CHICAGO INC.				WARNING - THIS DOCUMENT CONTAINS TECHNICAL DATA WHOSE EXPORT IS RESTRICTED BY THE ARMS EXPORT CONTROL ACT (TITLE 22, U.S.C., SEC 2751, ET. SEQ.) OR THE EXPORT ADMINISTRATION ACT OF 1979, AS AMENDED, TITLE 50, U.S.C., APP 2401 ET SEQ. VIOLATIONS OF THESE EXPORT LAWS ARE SUBJECT TO SEVERE CRIMINAL PENALTIES. DISSEMINATE IN ACCORDANCE WITH PROVISIONS OF DOD DIRECTIVE 5230.25.				Filename: ver2\Autodesk Inventor Data Base\Assemblies\26 Series\26D-1030-2670-CU.idw				The PHOENIX Company of Chicago, Inc. 22 GREAT HILL RD., NAUGATUCK, CT 06770 WWW.PHOENIXOFCHICAGO.COM PHONE: (800) 323-9562 FAX:(630) 206-1801			
								UNLESS OTHERWISE SPECIFIED, PHOENIX WORKMANSHIP STANDARDS APPLY DIMENSIONS IN INCHES OR (METRIC)		APPROVALS DRAWN: EK CHECKED: JEM QA MFG					
DO NOT SCALE PRINTS		TOLERANCES ARE: FRACTIONS: ± 1/64 DECIMALS: .XX ± .01 .XXX ± .003 ANGLES: ± 1/2°		ENGINEER: HN APPROVED: HN		DATE: 11/10/95 11/10/95		SIZE B	FSCM 58167	DWG NO 26D-1030-2670	REV J	PLATING OPT. A, B, C, D			
J REV.	ECN 14134 DESCRIPTION	4/1/22 DATE	AL BY	SCALE				F.S.R. #				SHEET 1 OF 1			

4

3

2

1