

4

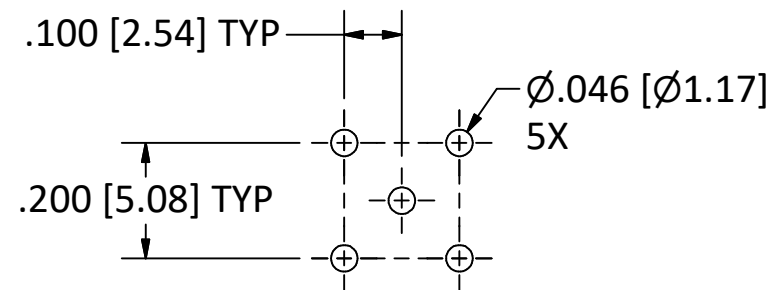
3

2

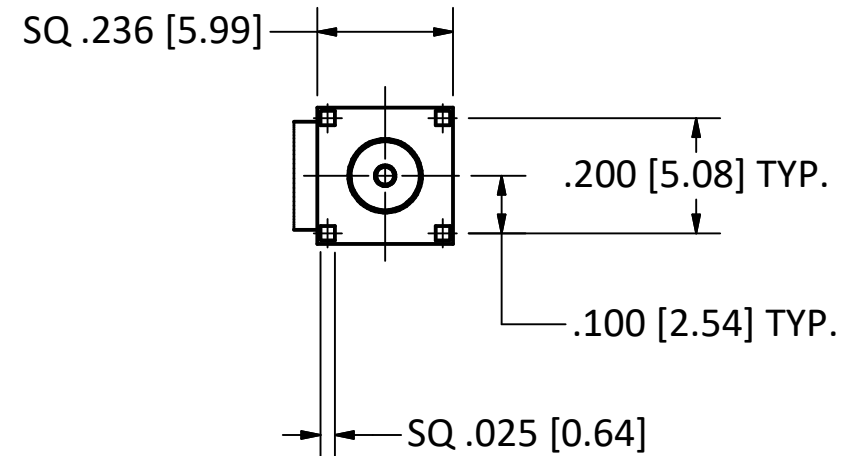
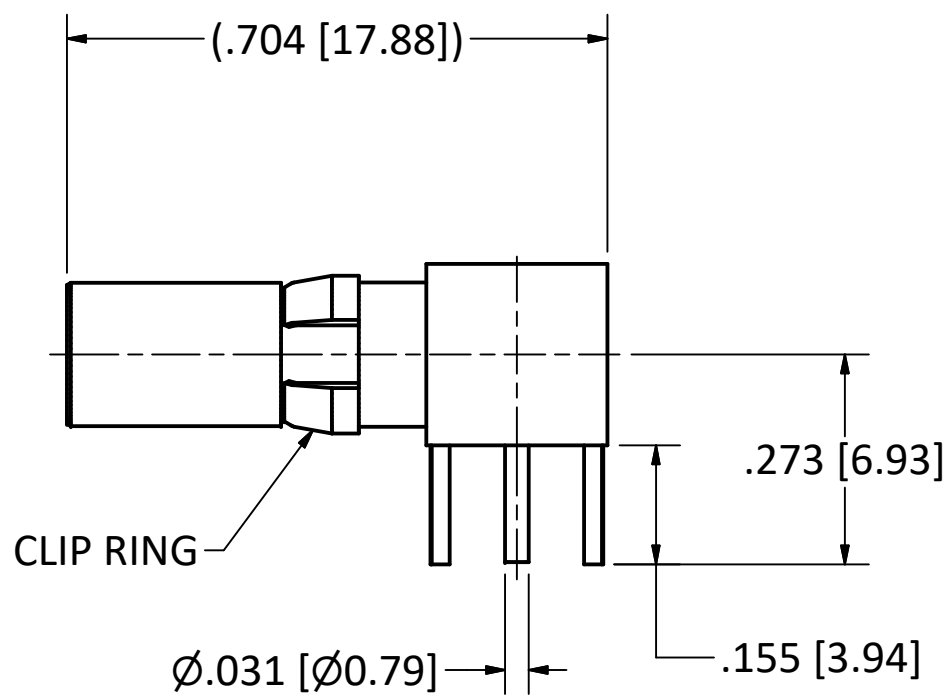
1

B

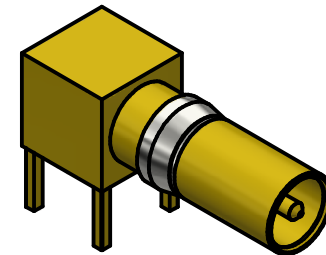
B



RECOMMENDED MOUNTING HOLES



NOTES:  
 1. SPECIFICATIONS PER IDS-26.  
**HOUSING:** DIN 41612, SIZE 8 CAVITY.



SCALE 2.5 : 1

| REV. | DESCRIPTION | DATE     | BY  |
|------|-------------|----------|-----|
| M    | ECN 13678   | 2/7/20   | JEM |
| L    | ECN 11864   | 3/6/14   | JEM |
| K    | ECN 10296   | 4/12/10  | JEM |
| I    | ECN 9640    | 11/19/08 | JEM |
| H    | ECN 6089    | 7/26/01  | HN  |

This drawing embodies a proprietary design of The Phoenix Company of Chicago, Inc., Naugatuck, CT 06770. All design, manufacturing, reproduction, use, sale, and other rights regarding the same are expressly reserved. The information in this drawing may be covered completely or in part by patents and/or patents pending.

WARNING - THIS DOCUMENT CONTAINS TECHNICAL DATA WHOSE EXPORT IS RESTRICTED BY THE ARMS EXPORT CONTROL ACT (TITLE 22, U.S.C., SEC 2751, ET. SEQ.) OR THE EXPORT ADMINISTRATION ACT OF 1979, AS AMENDED, TITLE 50, U.S.C., APP 2401 ET SEQ. VIOLATIONS OF THESE EXPORT LAWS ARE SUBJECT TO SEVERE CRIMINAL PENALTIES. DISSEMINATE IN ACCORDANCE WITH PROVISIONS OF DOD DIRECTIVE 5230.25.

Filename: ver2\Autodesk Inventor Data Base\Assemblies\26 Series\26D-3450-04-CU.idw

| UNLESS OTHERWISE SPECIFIED, PHOENIX WORKMANSHIP STANDARDS APPLY DIMENSIONS IN INCHES OR (METRIC) | APPROVALS   |            | DATE       |
|--|---|------------|------------|
|  | DO NOT SCALE PRINTS<br><br>TOLERANCES ARE:<br>FRACTIONS: ± 1/64<br>DECIMALS: .XX ± .01<br>.XXX ± .003<br>ANGLES: ± 1/2° | DRAWN      | MY         |
| CHECKED  |   | HN         | 10/17/1989 |
| QA   |   |            |            |
| MFG  |   |            |            |
| ENGINEER   |   | YT         | 10/17/1989 |
| APPROVED   | HN  | 10/17/1989 |            |

**The PHOENIX Company of Chicago, Inc.**  
 22 GREAT HILL RD., NAUGATUCK, CT 06770  
 WWW.PHOENIXOFCHICAGO.COM  
 PHONE: (800) 323-9562 FAX:(630) 206-1801

TITLE  
**PkZ® RIGHT ANGLE RECEPTACLE,  
 PRINTED CIRCUIT MOUNT**

|                  |               |                              |              |                            |
|------------------|---------------|------------------------------|--------------|----------------------------|
| SIZE<br><b>B</b> | FSCM<br>58167 | DWG NO<br><b>26D-3450-04</b> | REV<br>M     | PLATING OPT.<br>A, B, C, D |
| SCALE 2.5 : 1    |               | F.S.R. #                     | SHEET 1 OF 1 |                            |

4

3

2

1

A

A