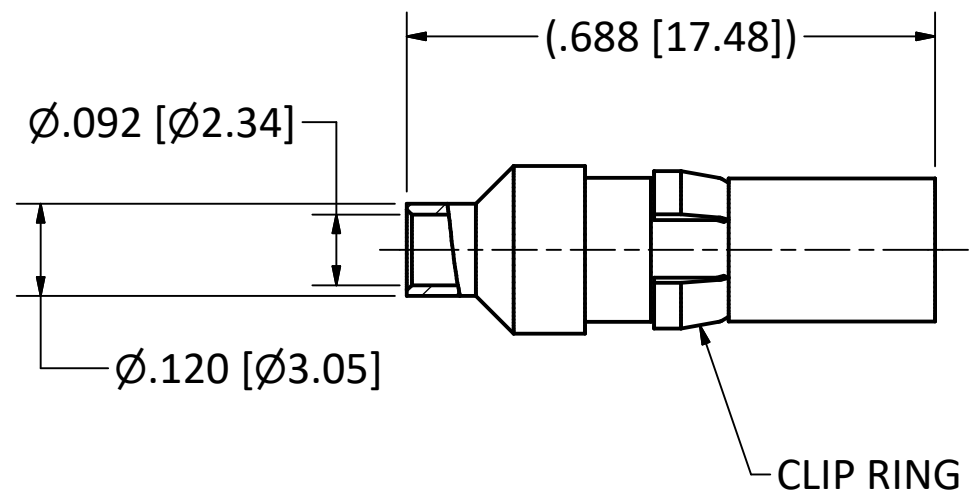
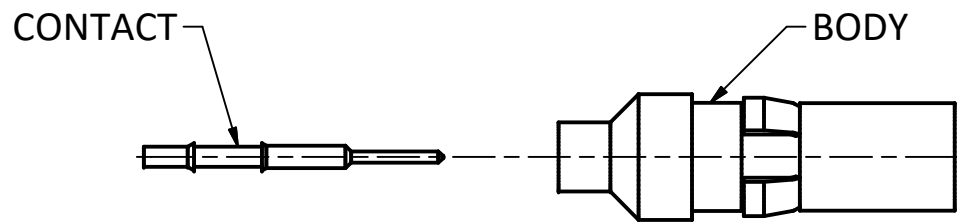


4

3

2

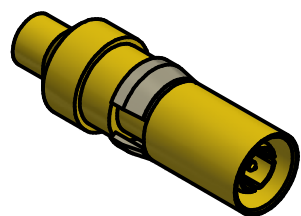
1



NOTES:

- 1. SPECIFICATIONS PER IDS-28.
- 2. CONTACT SHIPPED LOOSE.
- 3. ACCOMMODATES RG-405 (.086 SEMI-RIGID) OR EQUIVALENT FLEXIBLE CABLE.

HOUSING: DIN 41612, SIZE 8 CAVITY.



SCALE 2.5: 1

REV.	DESCRIPTION	DATE	BY
G	PER ECN 14006	4/21/2021	JEM
F	ECN 13780	06/10/20	JEM
E	ECN 10289	04/16/10	JEM
D	ECN 10220	03/05/10	JEM
C	ECN 6030	08/09/01	HN
B	ECN 4498	1/13/98	HN

This drawing embodies a proprietary design of The Phoenix Company of Chicago, Inc., Naugatuck, CT 06770. All design, manufacturing, reproduction, use, sale, and other rights regarding the same are expressly reserved. The information in this drawing may be covered completely or in part by patents and/or patents pending.

WARNING - THIS DOCUMENT CONTAINS TECHNICAL DATA WHOSE EXPORT IS RESTRICTED BY THE ARMS EXPORT CONTROL ACT (TITLE 22, U.S.C., SEC 2751, ET. SEQ.) OR THE EXPORT ADMINISTRATION ACT OF 1979, AS AMENDED, TITLE 50, U.S.C., APP 2401 ET SEQ. VIOLATIONS OF THESE EXPORT LAWS ARE SUBJECT TO SEVERE CRIMINAL PENALTIES. DISSEMINATE IN ACCORDANCE WITH PROVISIONS OF DOD DIRECTIVE 5230.25.

Filename: ver2\Autodesk Inventor Data Base\Assemblies\28 Series\28-0020-0860-CU.idw

UNLESS OTHERWISE SPECIFIED, PHOENIX WORKMANSHIP STANDARDS APPLY DIMENSIONS IN INCHES OR (METRIC)

DO NOT SCALE PRINTS
TOLERANCES ARE:
FRACTIONS: $\pm 1/64$
DECIMALS: $.XX \pm .01$
 $.XXX \pm .003$
ANGLES: $\pm 1/2^\circ$



	APPROVALS	DATE
DRAWN	EK	1/28/1996
CHECKED	HN	1/28/1996
QA		
MFG	HN	1/28/1996
ENGINEER	JEM	1/28/1996
APPROVED	HN	1/28/1996

The PHOENIX Company of Chicago, Inc.

22 GREAT HILL RD., NAUGATUCK, CT 06770
WWW.PHOENIXOFCHICAGO.COM
PHONE: (800) 323-9562 FAX:(630) 206-1801

TITLE
STRAIGHT PLUG, DIRECT SOLDER TERMINATION

SIZE B	FSCM 58167	DWG NO 28-0020-0860	REV G	PLATING OPT. A, B
SCALE 4 : 1		F.S.R. #	SHEET 1 OF 1	

4

3

2

1