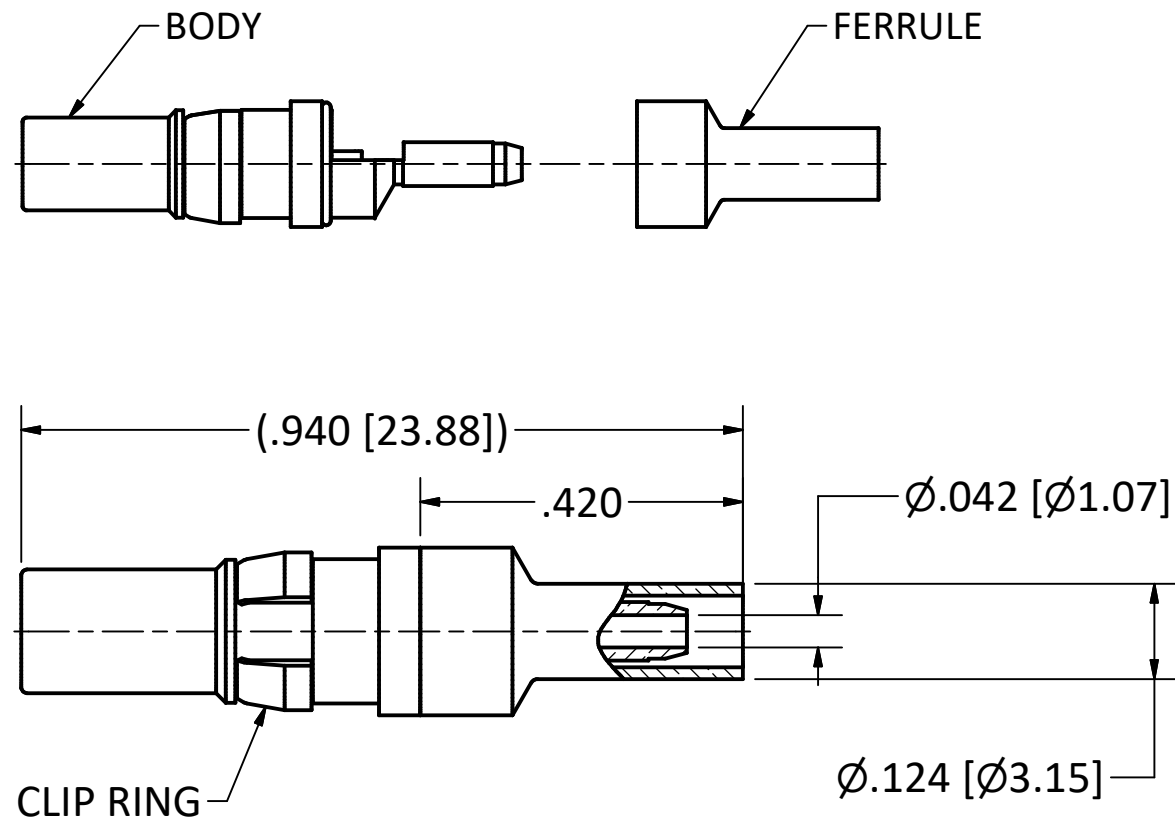


4

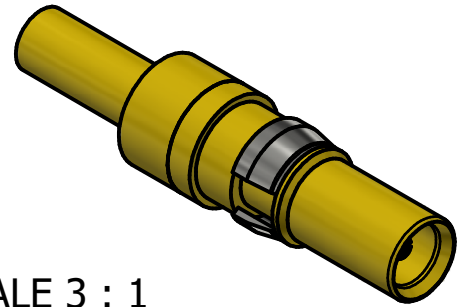
3

2

1



- NOTES:
1. SPECIFICATIONS PER IDS-28.
 2. FERRULE SHIPPED LOOSE.
 3. ACCOMMODATES RG-178, RG-196, OR 1.37mm CABLE.
 4. CRIMP USING .105 HEX DIE (M22520/5-03).
- HOUSING:** DIN 41612, SIZE 8 CAVITY.



SCALE 3 : 1

REV.	DESCRIPTION	DATE	BY
D	ECN 13793	9/8/2021	JEM
C	ECN 10366	05/17/2010	JEM
B	ECN 5073	5/20/1999	HN
A	ECN 4902	1/28/1999	HN

This drawing embodies a proprietary design of The Phoenix Company of Chicago, Inc., Naugatuck, CT 06770. All design, manufacturing, reproduction, use, sale, and other rights regarding the same are expressly reserved. The information in this drawing may be covered completely or in part by patents and/or patents pending.

WARNING - THIS DOCUMENT CONTAINS TECHNICAL DATA WHOSE EXPORT IS RESTRICTED BY THE ARMS EXPORT CONTROL ACT (TITLE 22, U.S.C., SEC 2751, ET. SEQ.) OR THE EXPORT ADMINISTRATION ACT OF 1979, AS AMENDED, TITLE 50, U.S.C., APP 2401 ET SEQ. VIOLATIONS OF THESE EXPORT LAWS ARE SUBJECT TO SEVERE CRIMINAL PENALTIES. DISSEMINATE IN ACCORDANCE WITH PROVISIONS OF DOD DIRECTIVE 5230.25.

Filename: ver2\Autodesk Inventor Data Base\Assemblies\28 Series\28-1080-0400-CU.idw		
UNLESS OTHERWISE SPECIFIED, PHOENIX WORKMANSHIP STANDARDS APPLY DIMENSIONS IN INCHES OR (METRIC) DO NOT SCALE PRINTS TOLERANCES ARE: FRACTIONS: ± 1/64 DECIMALS: .XX ± .01 .XXX ± .003 ANGLES: ± 1/2'	APPROVALS	DATE
	DRAWN JEM	1/28/1999
	CHECKED HN	1/28/1999
	QA VI	9/8/2021
	MFG VL	9/8/2021
	ENGINEER JEM	1/28/1999
APPROVED HN	1/28/1999	

The PHOENIX Company of Chicago, Inc.
 22 GREAT HILL RD., NAUGATUCK, CT 06770
 WWW.PHOENIXOFCHICAGO.COM
 PHONE: (800) 323-9562 FAX:(630) 206-1801

TITLE
STRAIGHT RECEPTACLE, SOLDER/CRIMP TERMINATION

SIZE B	FSCM 58167	DWG NO 28-1080-0400	REV D	PLATING OPT. A, B
SCALE 4 : 1		F.S.R. #	SHEET 1 OF 1	

4

3

2

1