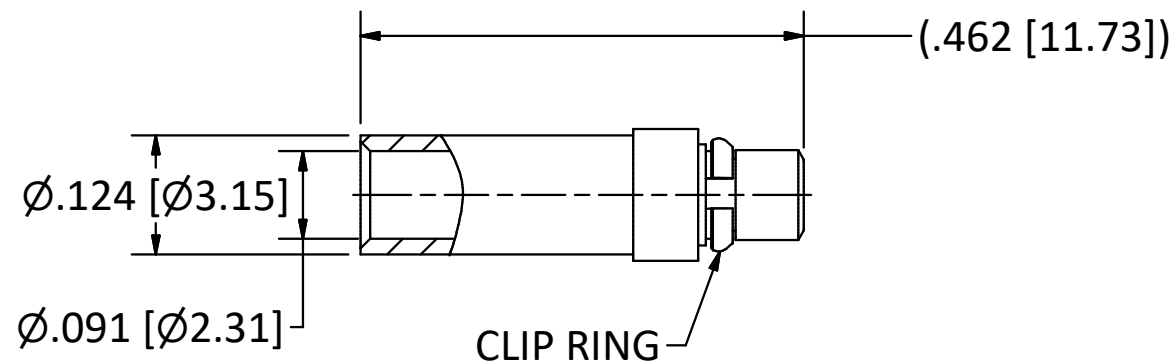
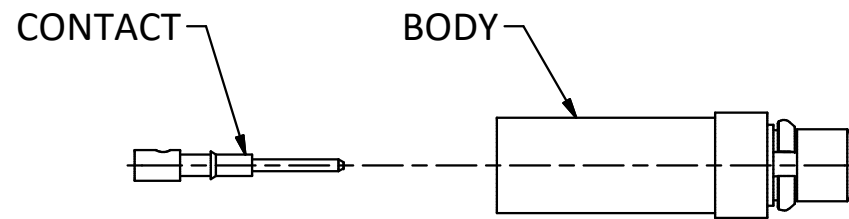


4

3

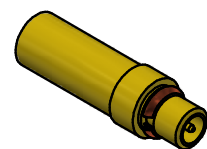
2

1



NOTES:

- 1. SPECIFICATIONS PER IDS-33J.
- 2. CONTACT SHIPPED LOOSE.
- 3. ACCOMMODATES RG-405 (.086 SEMI-RIGID) OR EQUIVALENT FLEXIBLE CABLE.
- 4. MAGNETISM: <1.00000 mu.



SCALE 2.5 : 1

REV.	DESCRIPTION	DATE	BY
K	PER ECN 10768	12/02/10	JEM
J	PER ECN 8854	3/7/07	JEM
H	PER ECN 4739	10/19/98	HN
G	PER ECN 3877	5/7/97	HN
F	PER ECN 3341	2/16/96	HN

This drawing embodies a proprietary design of The Phoenix Company of Chicago, Inc., Naugatuck, CT 06770. All design, manufacturing, reproduction, use, sale, and other rights regarding the same are expressly reserved. The information in this drawing may be covered completely or in part by patents and/or patents pending.

WARNING - THIS DOCUMENT CONTAINS TECHNICAL DATA WHOSE EXPORT IS RESTRICTED BY THE ARMS EXPORT CONTROL ACT (TITLE 22, U.S.C., SEC 2751, ET. SEQ.) OR THE EXPORT ADMINISTRATION ACT OF 1979, AS AMENDED, TITLE 50, U.S.C., APP 2401 ET SEQ. VIOLATIONS OF THESE EXPORT LAWS ARE SUBJECT TO SEVERE CRIMINAL PENALTIES. DISSEMINATE IN ACCORDANCE WITH PROVISIONS OF DOD DIRECTIVE 5230.25.

Filename: ver2\Autodesk Inventor Data Base\Assemblies\33 Series\33-0200-0860J-CU.idw

UNLESS OTHERWISE SPECIFIED, PHOENIX WORKMANSHIP STANDARDS APPLY DIMENSIONS IN INCHES OR (METRIC)

DO NOT SCALE PRINTS
TOLERANCES ARE:
FRACTIONS: $\pm 1/64$
DECIMALS: .XX $\pm .01$
.XXX $\pm .003$
ANGLES: $\pm 1/2^\circ$



APPROVALS	DATE
DRAWN EY	5/25/1993
CHECKED HN	5/25/1993
QA	
MFG	
ENGINEER EW	5/25/1993
APPROVED HN	5/25/1993

The PHOENIX Company of Chicago, Inc.

22 GREAT HILL RD., NAUGATUCK, CT 06770
WWW.PHOENIXOFCHICAGO.COM
PHONE: (800) 323-9562 FAX:(630) 206-1801

TITLE MMCX PLUG, DIRECT SOLDER TERMINATION					
SIZE B	FSCM 58167	DWG NO 33-0200-0860J	REV K	PLATING OPT.	
SCALE 5 : 1	F.S.R. #	SHEET 1	OF 1		

4

3

2

1