

4

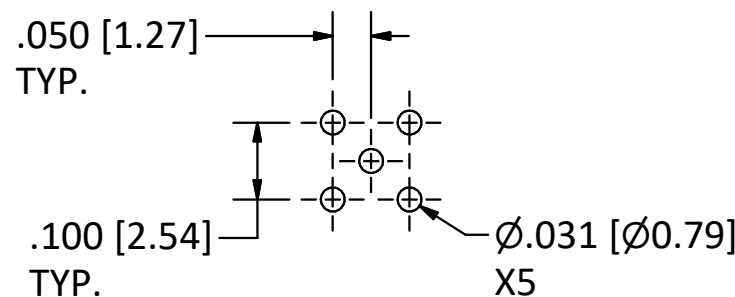
3

2

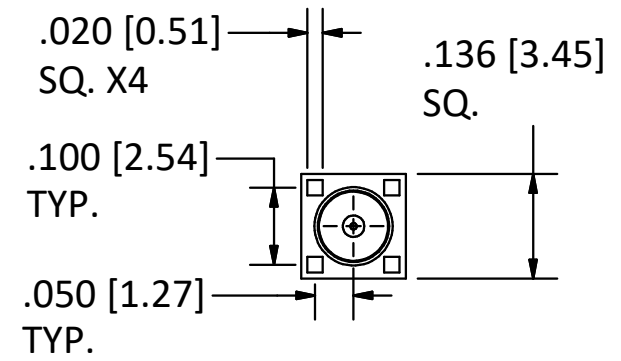
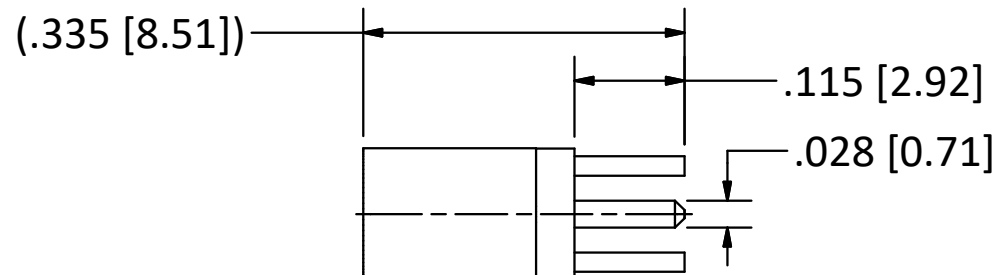
1

B

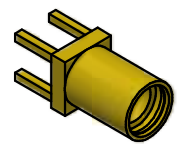
B



RECOMMENDED MOUNTING HOLES



- NOTES:
 1. SPECIFICATIONS PER IDS-33J.
 2. MAGNETISM: <1.00000 mu.



SCALE 2.5 : 1

4

3

2

1

A

A

This drawing embodies a proprietary design of The Phoenix Company of Chicago, Inc., Naugatuck, CT 06770. All design, manufacturing, reproduction, use, sale, and other rights regarding the same are expressly reserved. The information in this drawing may be covered completely or in part by patents and/or patents pending.				WARNING - THIS DOCUMENT CONTAINS TECHNICAL DATA WHOSE EXPORT IS RESTRICTED BY THE ARMS EXPORT CONTROL ACT (TITLE 22, U.S.C., SEC 2751, ET. SEQ.) OR THE EXPORT ADMINISTRATION ACT OF 1979, AS AMENDED, TITLE 50, U.S.C., APP 2401 ET SEQ. VIOLATIONS OF THESE EXPORT LAWS ARE SUBJECT TO SEVERE CRIMINAL PENALTIES. DISSEMINATE IN ACCORDANCE WITH PROVISIONS OF DOD DIRECTIVE 5230.25.		Filename: ver2\Autodesk Inventor Data Base\Assemblies\33 Series\33-1442-07J-CU.idw		The PHOENIX Company of Chicago, Inc. 22 GREAT HILL RD., NAUGATUCK, CT 06770 WWW.PHOENIXOFCHICAGO.COM PHONE: (800) 323-9562 FAX:(630) 206-1801																			
						UNLESS OTHERWISE SPECIFIED, PHOENIX WORKMANSHIP STANDARDS APPLY DIMENSIONS IN INCHES OR (METRIC) DO NOT SCALE PRINTS TOLERANCES ARE: FRACTIONS: ± 1/64 DECIMALS: .XX ± .01 .XXX ± .003 ANGLES: ± 1/2°		<table border="1"> <thead> <tr> <th>APPROVALS</th> <th>DATE</th> </tr> </thead> <tbody> <tr> <td>DRAWN YT</td> <td>4/17/2006</td> </tr> <tr> <td>CHECKED JM</td> <td>4/17/2006</td> </tr> <tr> <td>QA</td> <td></td> </tr> <tr> <td>MFG</td> <td></td> </tr> <tr> <td>ENGINEER YT</td> <td>4/17/2006</td> </tr> <tr> <td>APPROVED JM</td> <td>4/17/2006</td> </tr> </tbody> </table>		APPROVALS	DATE	DRAWN YT	4/17/2006	CHECKED JM	4/17/2006	QA		MFG		ENGINEER YT	4/17/2006	APPROVED JM	4/17/2006	TITLE MMCX STRAIGHT JACK, PRINTED CIRCUIT MOUNT			
APPROVALS	DATE																										
DRAWN YT	4/17/2006																										
CHECKED JM	4/17/2006																										
QA																											
MFG																											
ENGINEER YT	4/17/2006																										
APPROVED JM	4/17/2006																										
<table border="1"> <thead> <tr> <th>REV.</th> <th>DESCRIPTION</th> <th>DATE</th> <th>BY</th> </tr> </thead> <tbody> <tr> <td>C</td> <td>PER ECN 12565</td> <td>8/01/17</td> <td>JEM</td> </tr> <tr> <td>B</td> <td>PER ECN 9995</td> <td>8/17/09</td> <td>JEM</td> </tr> <tr> <td>A</td> <td>PER ECN 8470</td> <td>4/17/06</td> <td>JM</td> </tr> </tbody> </table>		REV.	DESCRIPTION	DATE	BY	C	PER ECN 12565	8/01/17	JEM	B	PER ECN 9995	8/17/09	JEM	A	PER ECN 8470	4/17/06	JM	SIZE B		FSCM 58167		DWG NO 33-1442-07J		REV C		PLATING OPT.	
REV.	DESCRIPTION	DATE	BY																								
C	PER ECN 12565	8/01/17	JEM																								
B	PER ECN 9995	8/17/09	JEM																								
A	PER ECN 8470	4/17/06	JM																								
				SCALE 5 : 1		F.S.R. #		SHEET 1 OF 1																			