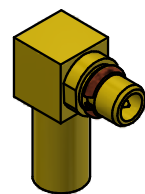


NOTES:

1. SPECIFICATIONS PER IDS-33J.
2. CAP SHIPPED LOOSE.
3. ACCOMMODATES RG-405 (.086 SEMI-RIGID) OR EQUIVALENT FLEXIBLE CABLE.
4. MAGNETISM: <1.00000 mu.



SCALE 2.5 : 1

REV.	DESCRIPTION	DATE	BY
M	PER ECN 9242	1/23/08	HN
L	PER ECN 9176	12/5/07	JEM
K	PER ECN 8559	6/20/06	JEM
J	PER ECN 8110	7/25/05	JEM
I	PER ECN 4748	10/26/98	JEM

This drawing embodies a proprietary design of The Phoenix Company of Chicago, Inc., Naugatuck, CT 06770. All design, manufacturing, reproduction, use, sale, and other rights regarding the same are expressly reserved. The information in this drawing may be covered completely or in part by patents and/or patents pending.

WARNING - THIS DOCUMENT CONTAINS TECHNICAL DATA WHOSE EXPORT IS RESTRICTED BY THE ARMS EXPORT CONTROL ACT (TITLE 22, U.S.C., SEC 2751, ET. SEQ.) OR THE EXPORT ADMINISTRATION ACT OF 1979, AS AMENDED, TITLE 50, U.S.C., APP 2401 ET SEQ. VIOLATIONS OF THESE EXPORT LAWS ARE SUBJECT TO SEVERE CRIMINAL PENALTIES. DISSEMINATE IN ACCORDANCE WITH PROVISIONS OF DOD DIRECTIVE 5230.25.

Filename: ver2\Autodesk Inventor Data Base\Assemblies\33 Series\33-2200-0860J-CU.idw

UNLESS OTHERWISE SPECIFIED, PHOENIX WORKMANSHIP STANDARDS APPLY DIMENSIONS IN INCHES OR (METRIC)

DO NOT SCALE PRINTS
TOLERANCES ARE:
FRACTIONS: $\pm 1/64$
DECIMALS: .XX $\pm .01$
.XXX $\pm .003$
ANGLES: $\pm 1/2^\circ$

$\sqrt{32}$

APPROVALS	DATE
DRAWN EK	5/25/1993
CHECKED HN	5/25/1993
QA	
MFG	
ENGINEER EW	5/25/1993
APPROVED HN	5/25/1993

The PHOENIX Company of Chicago, Inc.

22 GREAT HILL RD., NAUGATUCK, CT 06770
WWW.PHOENIXOFCHICAGO.COM
PHONE: (800) 323-9562 FAX:(630) 206-1801

TITLE
MMCX RIGHT ANGLE PLUG, DIRECT SOLDER TERMINATION

SIZE	FSCM	DWG NO	REV	PLATING OPT.
B	58167	33-2200-0860J	M	
SCALE	5 : 1	F.S.R. #	SHEET 1	OF 1