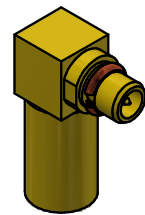


NOTES:

1. SPECIFICATIONS PER IDS-33J.
2. CAP AND FERRULE SHIPPED LOOSE.
3. ACCOMMODATES RG-174, RG-179, RG-187, RG-188, OR RG-316 CABLE.
4. CRIMP USING .128 HEX (M22520/5-03).
5. MAGNETISM: <1.00000 mu.



SCALE 2.5 : 1

REV.	DESCRIPTION	DATE	BY
M	PER ECN 12495	4/5/17	JEM
L	PER ECN 9245	1/22/08	JEM
K	PER ECN 8345	1/23/06	JEM
J	PER ECN 7928	4/6/05	JEM
H	PER ECN 5723	12/21/00	HN

This drawing embodies a proprietary design of The Phoenix Company of Chicago, Inc., Naugatuck, CT 06770. All design, manufacturing, reproduction, use, sale, and other rights regarding the same are expressly reserved. The information in this drawing may be covered completely or in part by patents and/or patents pending.

WARNING - THIS DOCUMENT CONTAINS TECHNICAL DATA WHOSE EXPORT IS RESTRICTED BY THE ARMS EXPORT CONTROL ACT (TITLE 22, U.S.C., SEC 2751, ET. SEQ.) OR THE EXPORT ADMINISTRATION ACT OF 1979, AS AMENDED, TITLE 50, U.S.C., APP 2401 ET SEQ. VIOLATIONS OF THESE EXPORT LAWS ARE SUBJECT TO SEVERE CRIMINAL PENALTIES. DISSEMINATE IN ACCORDANCE WITH PROVISIONS OF DOD DIRECTIVE 5230.25.

Filename: ver2\Autodesk Inventor Data Base\Assemblies\33 Series\33-2800-0670J-CU.idw

UNLESS OTHERWISE SPECIFIED, PHOENIX WORKMANSHIP STANDARDS APPLY DIMENSIONS IN INCHES OR (METRIC)

DO NOT SCALE PRINTS
TOLERANCES ARE:
FRACTIONS: ± 1/64
DECIMALS: .XX ± .01
.XXX ± .003
ANGLES: ± 1/2°



APPROVALS	DATE
DRAWN YS	4/20/1994
CHECKED JEM	4/20/1994
QA	
MFG	
ENGINEER EW	4/20/1994
APPROVED JEM	4/20/1994

The **PHOENIX** Company of Chicago, Inc.

22 GREAT HILL RD., NAUGATUCK, CT 06770
WWW.PHOENIXOFCHICAGO.COM
PHONE: (800) 323-9562 FAX:(630) 206-1801

TITLE
MMCX RIGHT ANGLE PLUG, CRIMP TERMINATION

SIZE	FSCM	DWG NO	REV	PLATING OPT.
B	58167	33-2800-0670J	M	
SCALE	5 : 1	F.S.R. #	SHEET 1	OF 1