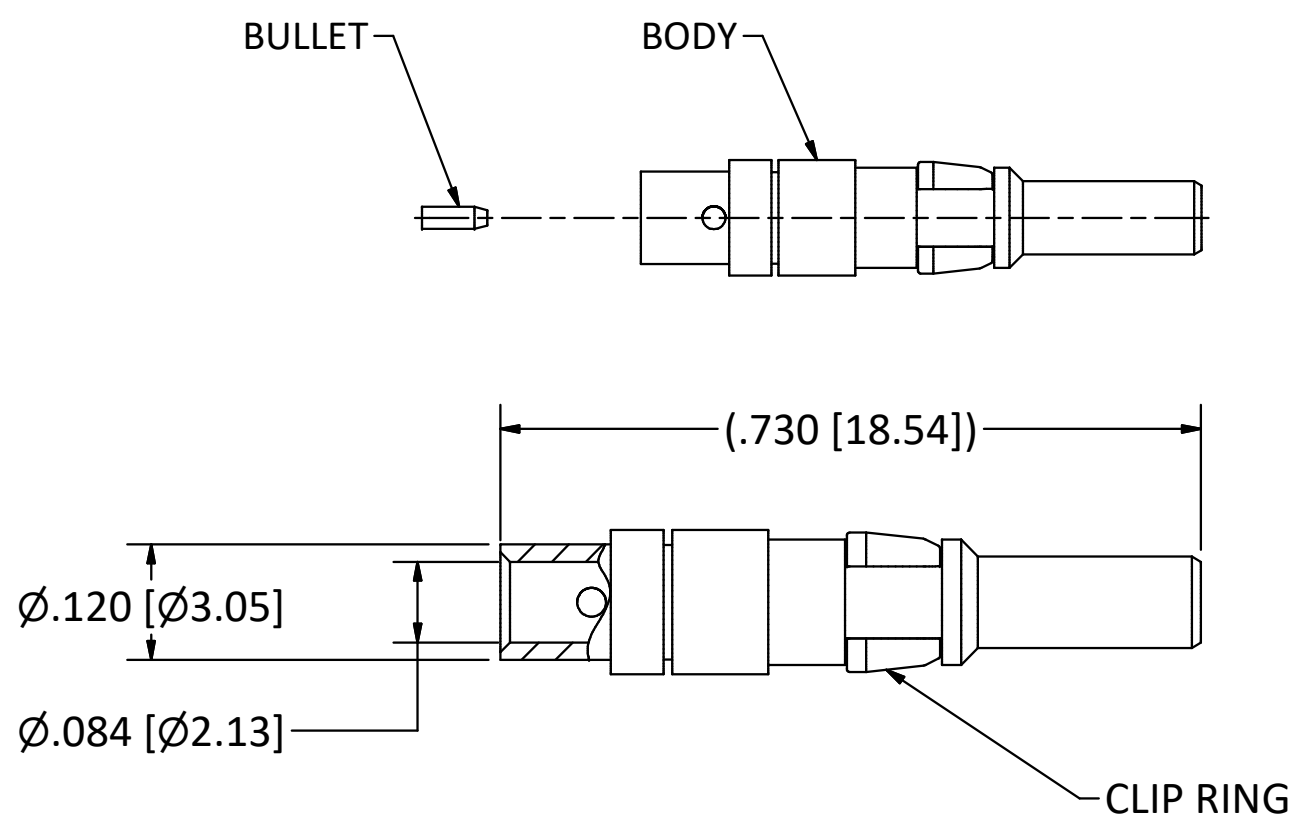


4

3

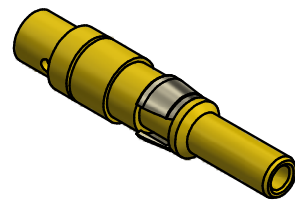
2

1



NOTES:

- 1. SPECIFICATIONS PER IDS-56.
  - 2. BULLET SHIPPED LOOSE.
  - 3. ACCOMMODATES RG-174, RG-179, RG-187, RG-188, OR RG-316 CABLE.
- HOUSING:** CUSTOM AND BENDIX LRM, SIZE 12 CAVITY.



SCALE 2.5 : 1

<p>THE INFORMATION AND DESIGNS DISCLOSED IN THIS DOCUMENT ARE CONFIDENTIAL AND/OR PROPRIETARY TO THE PHOENIX COMPANY OF CHICAGO INC. AND MAY NOT BE USED FOR MANUFACTURING, REPRODUCED, DISCLOSED TO OTHERS OR FOR ANY OTHER PURPOSE WITHOUT THE EXPRESS WRITTEN CONSENT OF THE PHOENIX COMPANY OF CHICAGO INC.</p>				<p>WARNING - THIS DOCUMENT CONTAINS TECHNICAL DATA WHOSE EXPORT IS RESTRICTED BY THE ARMS EXPORT CONTROL ACT (TITLE 22, U.S.C., SEC 2751, ET. SEQ.) OR THE EXPORT ADMINISTRATION ACT OF 1979, AS AMENDED, TITLE 50, U.S.C., APP 2401 ET SEQ. VIOLATIONS OF THESE EXPORT LAWS ARE SUBJECT TO SEVERE CRIMINAL PENALTIES. DISSEMINATE IN ACCORDANCE WITH PROVISIONS OF DOD DIRECTIVE 5230.25.</p>				<p>Filename: \\Autodesk Inventor Data Base\Assemblies\78 Series\78-1080-0670-CU-Layout for C Sized Drawing.idw</p>				<p><b>The PHOENIX Company of Chicago, Inc.</b>          22 GREAT HILL RD., NAUGATUCK, CT 06770          WWW.PHOENIXOFCHICAGO.COM          PHONE: (800) 323-9562 FAX:(630) 206-1801</p>							
								<p>UNLESS OTHERWISE SPECIFIED, PHOENIX WORKMANSHIP STANDARDS APPLY DIMENSIONS IN INCHES OR (METRIC)</p>		<p>APPROVALS</p>						<p>DATE</p>			
<p>DO NOT SCALE PRINTS</p>		<p>TOLERANCES ARE:          FRACTIONS: ± 1/64          DECIMALS: .XX ± .01          .XXX ± .003          ANGLES: ± 1/2°</p>		<p>DRAWN JEM</p>		<p>10/18/12</p>		<p>TITLE <b>PKZ® PLUG, DIRECT SOLDER TERMINATION</b></p>											
<p>QA</p>		<p>10/18/12</p>		<p>CHECKED JEM</p>		<p>10/18/12</p>													
<p>MFG</p>		<p>ENGINEER JEM</p>		<p>10/18/12</p>		<p>SIZE <b>B</b></p>						<p>FSCM 58167</p>		<p>DWG NO <b>56-0202-0670</b></p>		<p>REV C</p>		<p>PLATING OPT. A, B, C, D</p>	
<p>APPROVED JEM</p>		<p>10/18/12</p>		<p>SCALE</p>		<p>F.S.R. #</p>						<p>SHEET 1 OF 1</p>							

4

3

2

1