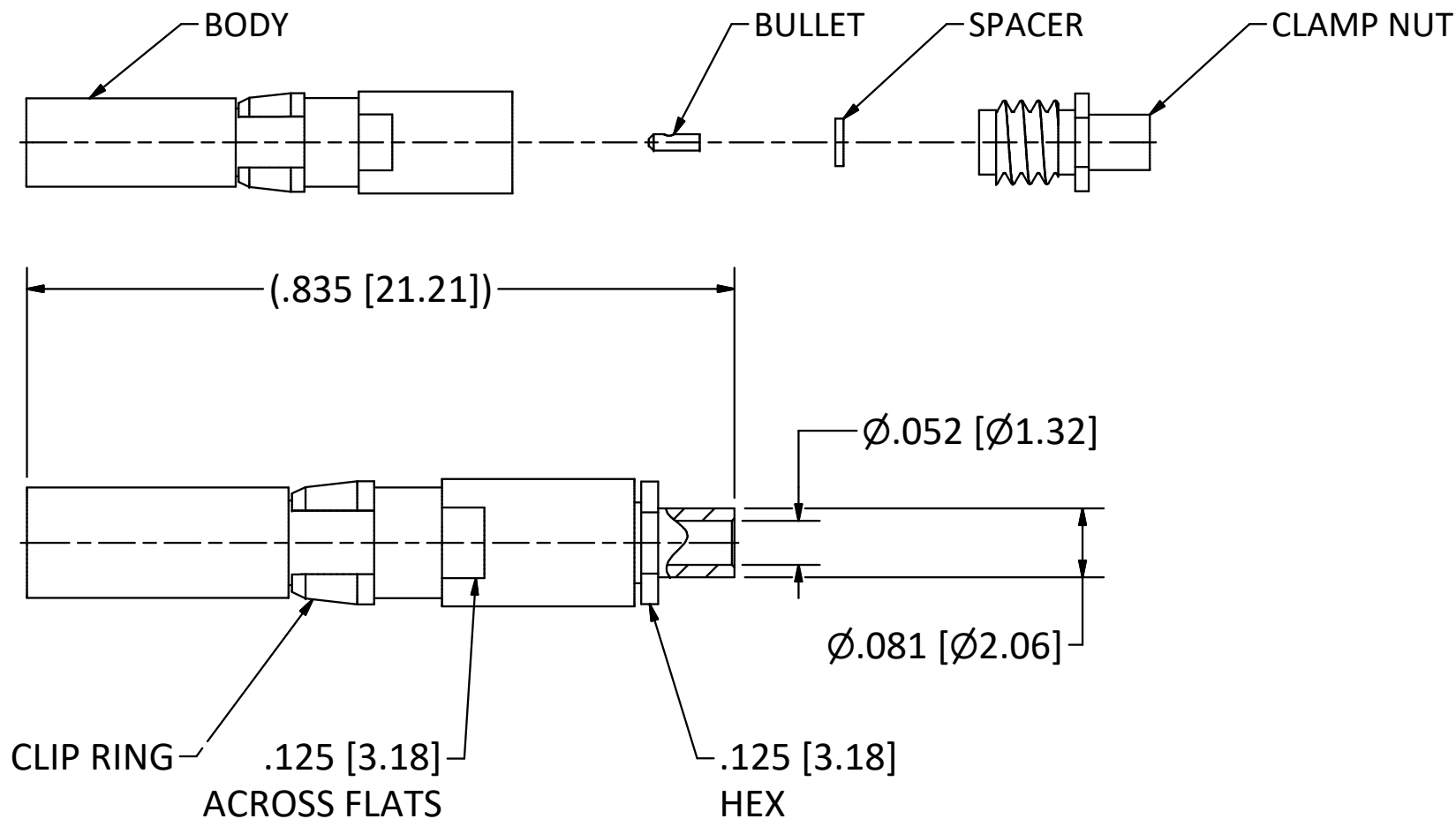


4

3

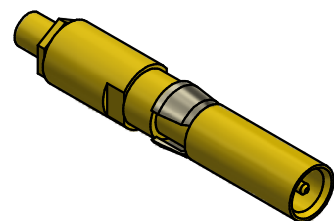
2

1



NOTES:

- 1. SPECIFICATIONS PER IDS-56.
 - 2. BULLET, SPACER, AND CLAMP NUT SHIPPED LOOSE.
 - 3. ACCOMMODATES M17/151 (.047 SEMI-RIGID) OR EQUIVALENT FLEXIBLE CABLE.
- HOUSING:** CUSTOM AND BENDIX LRM, SIZE 12 CAVITY.



SCALE 2.5 : 1

B	PER ECN 13882	10/23/20	JEM
A	REL ECN 12562	8/1/17	RMB
03	REVISED	7/25/17	RMB
02	REVISED	4/19/16	RMB
01	PRELIMINARY	3/2/16	RMB
REV	DESCRIPTION	DATE	BY

This drawing embodies a proprietary design of The Phoenix Company of Chicago, Inc., Naugatuck, CT 06770. All design, manufacturing, reproduction, use, sale, and other rights regarding the same are expressly reserved. The information in this drawing may be covered completely or in part by patents and/or patents pending.

WARNING - THIS DOCUMENT CONTAINS TECHNICAL DATA WHOSE EXPORT IS RESTRICTED BY THE ARMS EXPORT CONTROL ACT (TITLE 22, U.S.C., SEC 2751, ET. SEQ.) OR THE EXPORT ADMINISTRATION ACT OF 1979, AS AMENDED, TITLE 50, U.S.C., APP 2401 ET SEQ. VIOLATIONS OF THESE EXPORT LAWS ARE SUBJECT TO SEVERE CRIMINAL PENALTIES. DISSEMINATE IN ACCORDANCE WITH PROVISIONS OF DOD DIRECTIVE 5230.25.

Filename: \\Autodesk Inventor Data Base\Assemblies\78 Series\78-1080-0670-CU-Layout for C Sized Drawing.idw

UNLESS OTHERWISE SPECIFIED, PHOENIX WORKMANSHIP STANDARDS APPLY DIMENSIONS IN INCHES OR (METRIC)

DO NOT SCALE PRINTS
TOLERANCES ARE:
FRACTIONS: $\pm 1/64$
DECIMALS: $.XX \pm .01$
 $.XXX \pm .003$
ANGLES: $\pm 1/2^\circ$



APPROVALS	DATE
DRAWN JEM	3/2/2016
CHECKED RMB	3/2/2016
QA	
MFG	
ENGINEER JEM	3/2/2016
APPROVED RMB	3/2/2016

The **PHOENIX** Company of Chicago, Inc.

22 GREAT HILL RD., NAUGATUCK, CT 06770
WWW.PHOENIXOFCHICAGO.COM
PHONE: (800) 323-9562 FAX:(630) 206-1801

TITLE
PKZ[®] RECEPTACLE, SOLDER/CLAMP TERMINATION

SIZE B	FSCM 58167	DWG NO 56-1302-0470	REV B	PLATING OPT. A, B, C
SCALE 5 : 1	F.S.R. #	SHEET 1	OF 1	

4

3

2

1