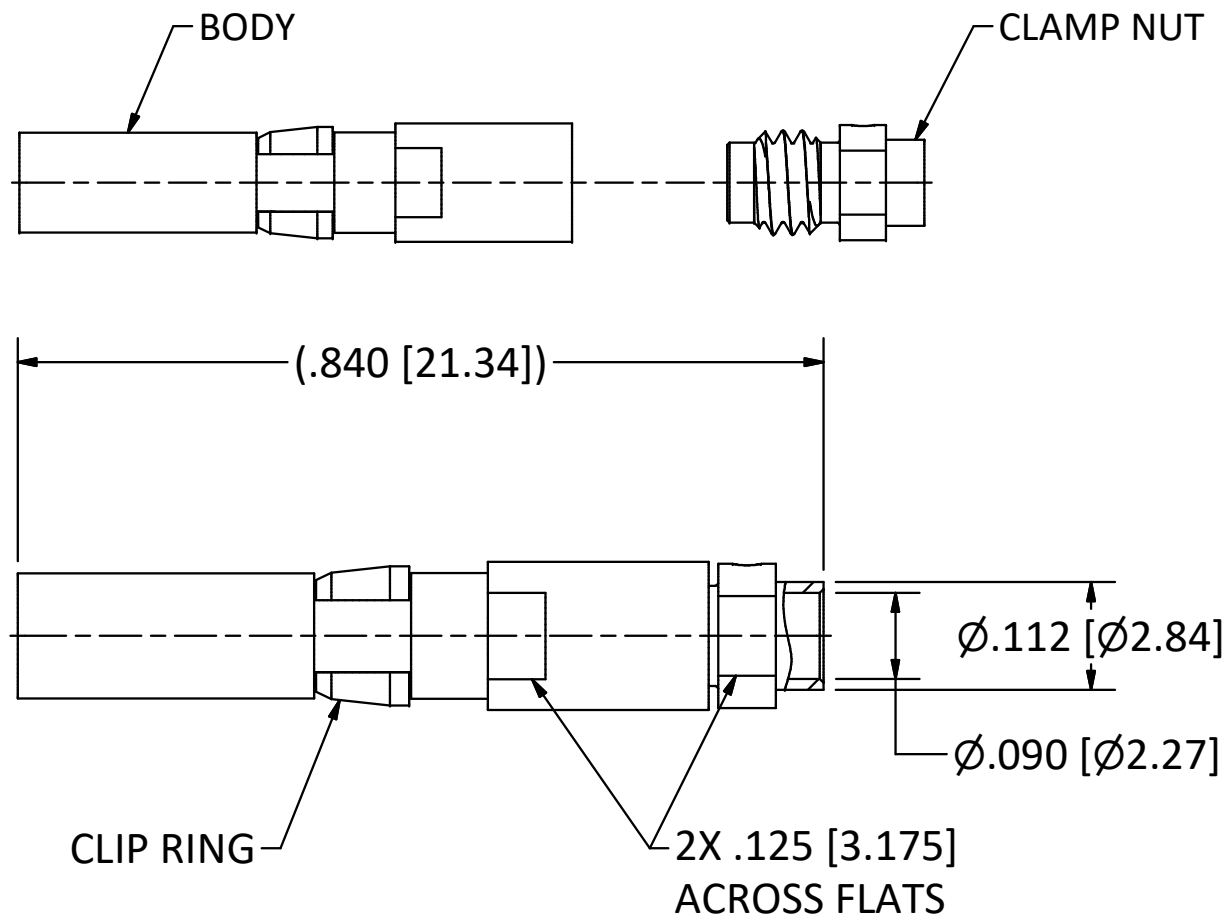


4

3

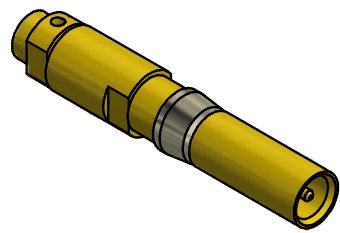
2

1



NOTES:

- 1. SPECIFICATIONS PER IDS-56.
 - 2. CLAMP NUT SHIPPED LOOSE.
 - 3. ACCOMMODATES RG-405 (.086 SEMI-RIGID) OR EQUIVALENT FLEXIBLE CABLE.
- HOUSING:** CUSTOM AND BENDIX LRM, SIZE 12 CAVITY.



SCALE 2.5 : 1

REV	DESCRIPTION	DATE	BY
K	PER ECN 13835	9/10/20	SAL
J	PER ECN 13553	11/21/19	BGW
I	PER ECN 13048	7/30/18	BH
H	PER ECN 12590	8/22/17	JEM
G	PER ECN 12393	11/2/16	RMB
F	PER ECN 11539	11/21/19	JEM
E	PER ECN 11456	9/25/12	JEM

This drawing embodies a proprietary design of The Phoenix Company of Chicago, Inc., Naugatuck, CT 06770. All design, manufacturing, reproduction, use, sale, and other rights regarding the same are expressly reserved. The information in this drawing may be covered completely or in part by patents and/or patents pending.

WARNING - THIS DOCUMENT CONTAINS TECHNICAL DATA WHOSE EXPORT IS RESTRICTED BY THE ARMS EXPORT CONTROL ACT (TITLE 22, U.S.C., SEC 2751, ET. SEQ.) OR THE EXPORT ADMINISTRATION ACT OF 1979, AS AMENDED, TITLE 50, U.S.C., APP 2401 ET SEQ. VIOLATIONS OF THESE EXPORT LAWS ARE SUBJECT TO SEVERE CRIMINAL PENALTIES. DISSEMINATE IN ACCORDANCE WITH PROVISIONS OF DOD DIRECTIVE 5230.25.

Filename: \\Autodesk Inventor Data Base\Assemblies\78 Series\78-1080-0670-CU-Layout for C Sized Drawing.idw		
UNLESS OTHERWISE SPECIFIED, PHOENIX WORKMANSHIP STANDARDS APPLY DIMENSIONS IN INCHES OR (METRIC)	APPROVALS	DATE
	DRAWN EK	4/24/2009
DO NOT SCALE PRINTS	CHECKED JEM	4/24/2009
	QA	
TOLERANCES ARE: FRACTIONS: ± 1/64 DECIMALS: .XX ± .01 .XXX ± .003 ANGLES: ± 1/2°	MFG	
	ENGINEER EK	4/24/2009
	APPROVED JEM	4/24/2009

The PHOENIX Company of Chicago, Inc.
 22 GREAT HILL RD., NAUGATUCK, CT 06770
 WWW.PHOENIXOFCHICAGO.COM
 PHONE: (800) 323-9562 FAX:(630) 206-1801

TITLE
PKZ® RECEPTACLE, SOLDER/CLAMP TERMINATION

SIZE B	FSCM 58167	DWG NO 56-1302-0866	REV K	PLATING OPT. A, B, C, D
SCALE 5 : 1		F.S.R. #	SHEET 1 OF 1	

4

3

2

1