

4

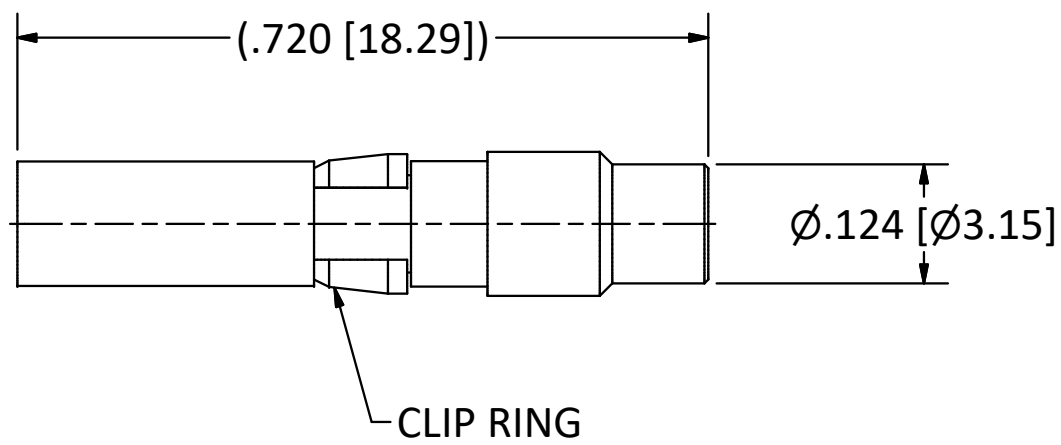
3

2

1

B

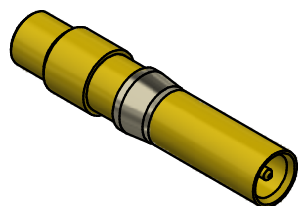
B



NOTES:

- 1. SPECIFICATIONS PER IDS-56.
- 2. CHARACTERISTIC IMPEDANCE: 50 OHMS.
- 3. VSWR AND FREQUENCY RANGE: 1.7:1 FROM DC TO 20 GHz.
- 4. WORKING VOLTAGE 150 VRMS.
- 5. TEMPERATURE RANGE -55° C TO 125° C.
- 6. POWER: 1 WATT.

HOUSING: CUSTOM AND BENDIX LRM, SIZE 12 CAVITY.



SCALE 2.5 : 1

4

3

2

1

A

A

<p>This drawing embodies a proprietary design of The Phoenix Company of Chicago, Inc., Naugatuck, CT 06770. All design, manufacturing, reproduction, use, sale, and other rights regarding the same are expressly reserved. The information in this drawing may be covered completely or in part by patents and/or patents pending.</p>				<p>WARNING - THIS DOCUMENT CONTAINS TECHNICAL DATA WHOSE EXPORT IS RESTRICTED BY THE ARMS EXPORT CONTROL ACT (TITLE 22, U.S.C., SEC 2751, ET. SEQ.) OR THE EXPORT ADMINISTRATION ACT OF 1979, AS AMENDED, TITLE 50, U.S.C., APP 2401 ET SEQ. VIOLATIONS OF THESE EXPORT LAWS ARE SUBJECT TO SEVERE CRIMINAL PENALTIES. DISSEMINATE IN ACCORDANCE WITH PROVISIONS OF DOD DIRECTIVE 5230.25.</p>		<p>Filename: \\Autodesk Inventor Data Base\Assemblies\78 Series\78-1080-0670-CU-Layout for C Sized Drawing.idw</p>		<p>The PHOENIX Company of Chicago, Inc. 22 GREAT HILL RD., NAUGATUCK, CT 06770 WWW.PHOENIXOFCHICAGO.COM PHONE: (800) 323-9562 FAX:(630) 206-1801</p>																																																												
						<p>UNLESS OTHERWISE SPECIFIED, PHOENIX WORKMANSHIP STANDARDS APPLY DIMENSIONS IN INCHES OR (METRIC)</p> <p>DO NOT SCALE PRINTS</p> <p>TOLERANCES ARE: FRACTIONS: ± 1/64 DECIMALS: .XX ± .01 .XXX ± .003 ANGLES: ± 1/2'</p>						<table border="1"> <tr><th>APPROVALS</th><th>DATE</th></tr> <tr><td>DRAWN JEM</td><td>12/28/2011</td></tr> <tr><td>CHECKED MS</td><td>12/28/2011</td></tr> <tr><td>QA</td><td></td></tr> <tr><td>MFG</td><td></td></tr> <tr><td>ENGINEER JEM</td><td>12/28/2011</td></tr> <tr><td>APPROVED MS</td><td>12/28/2011</td></tr> </table>		APPROVALS	DATE	DRAWN JEM	12/28/2011	CHECKED MS	12/28/2011	QA		MFG		ENGINEER JEM	12/28/2011	APPROVED MS	12/28/2011	<p>TITLE 50 OHM, PKZ® RECEPTACLE TERMINATION</p>																																								
APPROVALS	DATE																																																																			
DRAWN JEM	12/28/2011																																																																			
CHECKED MS	12/28/2011																																																																			
QA																																																																				
MFG																																																																				
ENGINEER JEM	12/28/2011																																																																			
APPROVED MS	12/28/2011																																																																			
<table border="1"> <tr><th>REV</th><th>DESCRIPTION</th><th>DATE</th><th>BY</th></tr> <tr><td>E</td><td>PER ECN 12390</td><td>10/31/16</td><td>RMB</td></tr> <tr><td>D</td><td>PER ECN 11483</td><td>10/23/12</td><td>JEM</td></tr> <tr><td>C</td><td>PER ECN 11349</td><td>4/27/12</td><td>JEM</td></tr> <tr><td>B</td><td>PER ECN 11299</td><td>3/13/12</td><td>MS</td></tr> <tr><td>A</td><td>PER ECN 11235</td><td>1/25/12</td><td>JEM</td></tr> <tr><td>REV</td><td>DESCRIPTION</td><td>DATE</td><td>BY</td></tr> </table>		REV	DESCRIPTION	DATE	BY	E	PER ECN 12390	10/31/16	RMB	D	PER ECN 11483	10/23/12	JEM	C	PER ECN 11349	4/27/12	JEM	B	PER ECN 11299	3/13/12	MS	A	PER ECN 11235	1/25/12	JEM	REV	DESCRIPTION	DATE	BY	<p>UNLESS OTHERWISE SPECIFIED, PHOENIX WORKMANSHIP STANDARDS APPLY DIMENSIONS IN INCHES OR (METRIC)</p> <p>DO NOT SCALE PRINTS</p> <p>TOLERANCES ARE: FRACTIONS: ± 1/64 DECIMALS: .XX ± .01 .XXX ± .003 ANGLES: ± 1/2'</p>		<table border="1"> <tr><th>APPROVALS</th><th>DATE</th></tr> <tr><td>DRAWN JEM</td><td>12/28/2011</td></tr> <tr><td>CHECKED MS</td><td>12/28/2011</td></tr> <tr><td>QA</td><td></td></tr> <tr><td>MFG</td><td></td></tr> <tr><td>ENGINEER JEM</td><td>12/28/2011</td></tr> <tr><td>APPROVED MS</td><td>12/28/2011</td></tr> </table>		APPROVALS	DATE	DRAWN JEM	12/28/2011	CHECKED MS	12/28/2011	QA		MFG		ENGINEER JEM	12/28/2011	APPROVED MS	12/28/2011	<table border="1"> <tr><th>SIZE</th><th>FSCM</th><th>DWG NO</th><th>REV</th><th>PLATING OPT.</th></tr> <tr><td>B</td><td>58167</td><td>56-1902-01</td><td>E</td><td>A</td></tr> </table>	SIZE	FSCM	DWG NO	REV	PLATING OPT.	B	58167	56-1902-01	E	A	<table border="1"> <tr><th>SCALE</th><th>F.S.R. #</th><th>SHEET</th><th>OF</th></tr> <tr><td>5 : 1</td><td></td><td>1</td><td>1</td></tr> </table>		SCALE	F.S.R. #	SHEET	OF	5 : 1		1	1
REV	DESCRIPTION	DATE	BY																																																																	
E	PER ECN 12390	10/31/16	RMB																																																																	
D	PER ECN 11483	10/23/12	JEM																																																																	
C	PER ECN 11349	4/27/12	JEM																																																																	
B	PER ECN 11299	3/13/12	MS																																																																	
A	PER ECN 11235	1/25/12	JEM																																																																	
REV	DESCRIPTION	DATE	BY																																																																	
APPROVALS	DATE																																																																			
DRAWN JEM	12/28/2011																																																																			
CHECKED MS	12/28/2011																																																																			
QA																																																																				
MFG																																																																				
ENGINEER JEM	12/28/2011																																																																			
APPROVED MS	12/28/2011																																																																			
SIZE	FSCM	DWG NO	REV	PLATING OPT.																																																																
B	58167	56-1902-01	E	A																																																																
SCALE	F.S.R. #	SHEET	OF																																																																	
5 : 1		1	1																																																																	