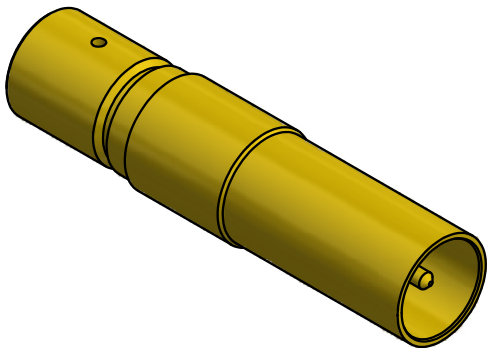


NOTES:

- 1. SPECIFICATIONS PER IDS-65.
- 2. ACCOMMODATES IW2301 OR EQUIVALENT FLEXIBLE CABLE.
- 3. DESIGNED TO MATE WITH 65 SERIES SIZE 5 PkZ PLUG ONLY.
- 4. ELECTRICAL PROPERTIES:
  - a) FREQUENCY: DC TO 18 GHz.
  - b) VSWR: 1.50 : 1 MAX.
- 5. HOUSING: ARINC 404/600 PLUG CONNECTOR SHELL CONTAINING SIZE 5 CAVITY (REF: MIL-DTL-83527B).
- 6. DOES NOT MATE WITH OTHER INDUSTRY-STANDARD SIZE 5 CONTACTS.



SCALE 2.5 : 1

				<p>This drawing embodies a proprietary design of The Phoenix Company of Chicago, Inc., Naugatuck, CT 06770. All design, manufacturing, reproduction, use, sale, and other rights regarding the same are expressly reserved. The information in this drawing may be covered completely or in part by patents and/or patents pending.</p>				<p>WARNING - THIS DOCUMENT CONTAINS TECHNICAL DATA WHOSE EXPORT IS RESTRICTED BY THE ARMS EXPORT CONTROL ACT (TITLE 22, U.S.C., SEC 2751, ET. SEQ.) OR THE EXPORT ADMINISTRATION ACT OF 1979, AS AMENDED, TITLE 50, U.S.C., APP 2401 ET SEQ. VIOLATIONS OF THESE EXPORT LAWS ARE SUBJECT TO SEVERE CRIMINAL PENALTIES. DISSEMINATE IN ACCORDANCE WITH PROVISIONS OF DOD DIRECTIVE 5230.25.</p>				<table><tr><td colspan="2" rowspan="5">UNLESS OTHERWISE SPECIFIED, PHOENIX WORKMANSHIP STANDARDS APPLY DIMENSIONS IN INCHES OR [METRIC]</td><td colspan="2">APPROVALS</td><td colspan="2">DATE</td></tr><tr><td colspan="2">DRAWN</td><td colspan="2">SPS</td><td colspan="2">10/10/2024</td></tr><tr><td colspan="2">CHECKED</td><td colspan="2">SJG</td><td colspan="2">10/10/2024</td></tr><tr><td colspan="2">QA</td><td colspan="2"></td><td colspan="2"></td></tr><tr><td colspan="2">MFG</td><td colspan="2"></td><td colspan="2"></td></tr><tr><td colspan="2" rowspan="3">TOLERANCES ARE: FRACTIONS: ± 1/64 DECIMALS: .XX ± .01 .XXX ± .003 ANGLES: ± 1/2°</td><td colspan="2">ENGINEER</td><td colspan="2">SPS</td><td colspan="2">10/10/2024</td></tr><tr><td colspan="2">APPROVED</td><td colspan="2">SJG</td><td colspan="2">10/10/2024</td></tr><tr><td colspan="2"></td><td colspan="2"></td><td colspan="2"></td></tr><tr><td colspan="2" rowspan="4"><div>32</div></td><td colspan="6"></td></tr><tr><td colspan="6"></td></tr><tr><td colspan="6"></td></tr><tr><td colspan="6"></td></tr></table>				UNLESS OTHERWISE SPECIFIED, PHOENIX WORKMANSHIP STANDARDS APPLY DIMENSIONS IN INCHES OR [METRIC]		APPROVALS		DATE		DRAWN		SPS		10/10/2024		CHECKED		SJG		10/10/2024		QA						MFG						TOLERANCES ARE: FRACTIONS: ± 1/64 DECIMALS: .XX ± .01 .XXX ± .003 ANGLES: ± 1/2°		ENGINEER		SPS		10/10/2024		APPROVED		SJG		10/10/2024								<div>32</div>																									
UNLESS OTHERWISE SPECIFIED, PHOENIX WORKMANSHIP STANDARDS APPLY DIMENSIONS IN INCHES OR [METRIC]		APPROVALS		DATE																																																																																							
		DRAWN		SPS		10/10/2024																																																																																					
		CHECKED		SJG		10/10/2024																																																																																					
		QA																																																																																									
		MFG																																																																																									
TOLERANCES ARE: FRACTIONS: ± 1/64 DECIMALS: .XX ± .01 .XXX ± .003 ANGLES: ± 1/2°		ENGINEER		SPS		10/10/2024																																																																																					
		APPROVED		SJG		10/10/2024																																																																																					
<div>32</div>																																																																																											
<p><i>The <b>PHOENIX</b> Company of Chicago, Inc.</i></p> <p>22 GREAT HILL RD., NAUGATUCK, CT 06770 WWW.PHOENIXOFCHICAGO.COM</p> <p>PHONE: (800) 323-9562 FAX:(630) 206-1801</p>																																																																																											
TITLE																																																																																											
ARINC 404/600 SIZE 5 PkZ® RECEPTACLE, DIRECT SOLDER TERMINATION																																																																																											
SIZE		FSCM		DWG NO				REV		PLATING OPT.																																																																																	
B		58167		65-1020-1911				A		A, B, C, D																																																																																	
SCALE		5 : 1				F.S.R. #				SHEET 1 OF 1																																																																																	