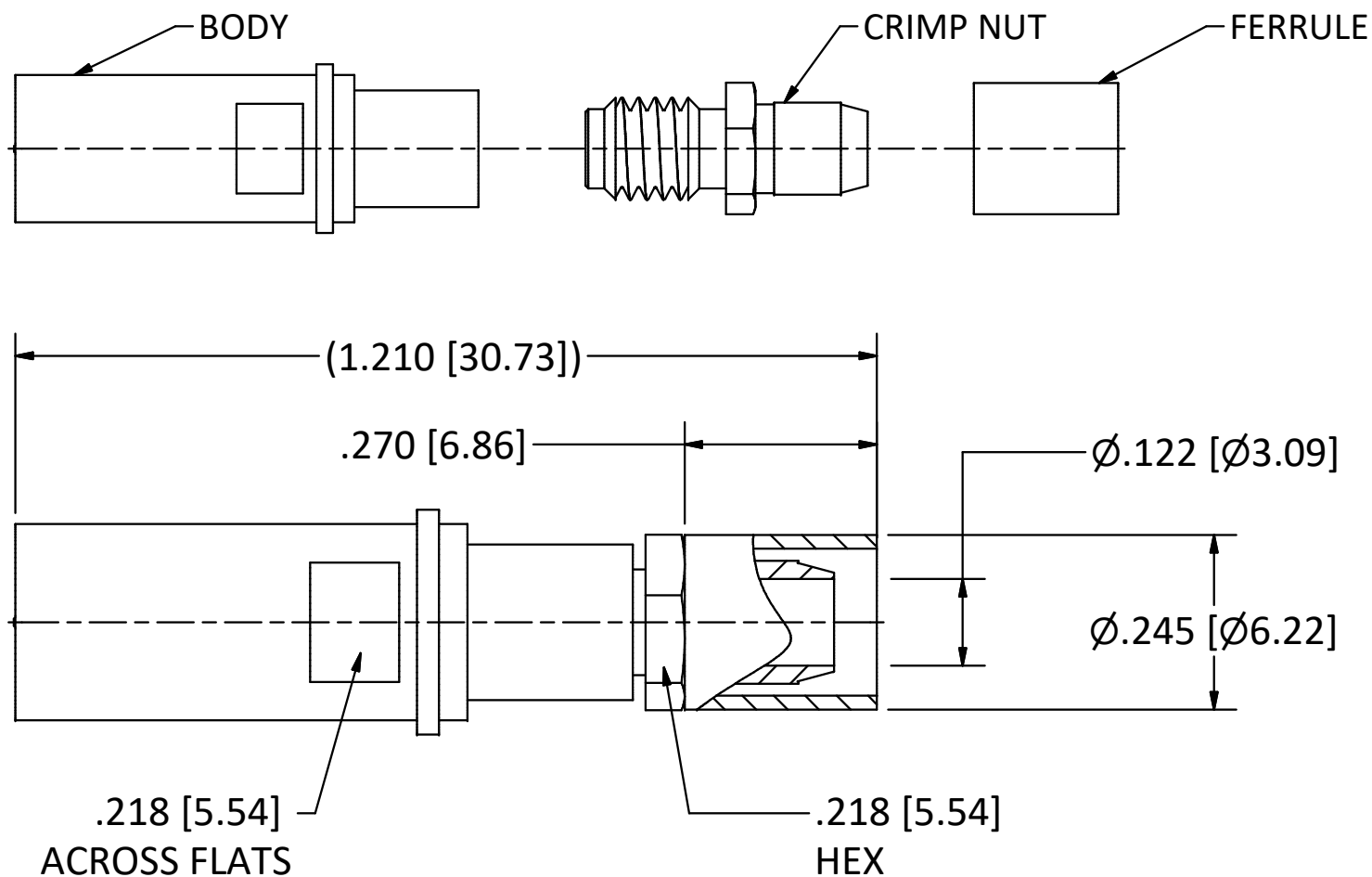


4

3

2

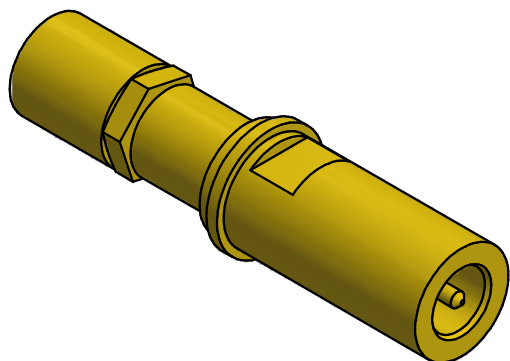
1



NOTES:

- 1. SPECIFICATIONS PER IDS-68.
- 2. CRIMP NUT AND FERRULE SHIPPED LOOSE.
- 3. ACCOMMODATES RG-58, RG-141, OR RG-303 CABLE.
- 4. CRIMP USING .213 HEX DIE (M22520/5-05).

HOUSING: ARINC 600 CONNECTOR PER MIL-C-83527/3, SIZE 8 CAVITY.



SCALE 2.5:1

REV	DESCRIPTION	DATE	BY
F	PER ECN 13445	08/05/2019	JEM
E	PER ECN 12693	11/03/2017	JEM
D	PER ECN 9689	12/09/2008	JEM
C	PER ECN 8040	06/21/2005	JEM
B	PER ECN 3655	11/18/1996	HN
A	PER ECN 3561	09/25/1996	HN

This drawing embodies a proprietary design of The Phoenix Company of Chicago, Inc., Naugatuck, CT 06770. All design, manufacturing, reproduction, use, sale, and other rights regarding the same are expressly reserved. The information in this drawing may be covered completely or in part by patents and/or patents pending.

WARNING - THIS DOCUMENT CONTAINS TECHNICAL DATA WHOSE EXPORT IS RESTRICTED BY THE ARMS EXPORT CONTROL ACT (TITLE 22, U.S.C., SEC 2751, ET. SEQ.) OR THE EXPORT ADMINISTRATION ACT OF 1979, AS AMENDED, TITLE 50, U.S.C., APP 2401 ET SEQ. VIOLATIONS OF THESE EXPORT LAWS ARE SUBJECT TO SEVERE CRIMINAL PENALTIES. DISSEMINATE IN ACCORDANCE WITH PROVISIONS OF DOD DIRECTIVE 5230.25.

Filename: \\Autodesk Inventor Data Base\Assemblies\78 Series\78-1080-0670-CU-Layout for C Sized Drawing.idw

UNLESS OTHERWISE SPECIFIED, PHOENIX WORKMANSHIP STANDARDS APPLY DIMENSIONS IN INCHES OR (METRIC)

DO NOT SCALE PRINTS
TOLERANCES ARE:
FRACTIONS: ± 1/64
DECIMALS: .XX ± .01
.XXX ± .003
ANGLES: ± 1/2°

32√

APPROVALS	DATE
DRAWN EK	9/25/1996
CHECKED JEM	9/25/1996
QA	
MFG	
ENGINEER JSV	9/25/1996
APPROVED JEM	9/26/1996

The **PHOENIX** Company of Chicago, Inc.

22 GREAT HILL RD., NAUGATUCK, CT 06770
WWW.PHOENIXOFCHICAGO.COM
PHONE: (800) 323-9562 FAX:(630) 206-1801

TITLE
PKZ® RECEPTACLE, CRIMP/CLAMP TERMINATION

SIZE	FSCM	DWG NO	REV	PLATING OPT.
B	58167	68-1080-1200	A	A, B, C, D
SCALE	4 : 1	F.S.R. #	SHEET 1	OF 1

4

3

2

1