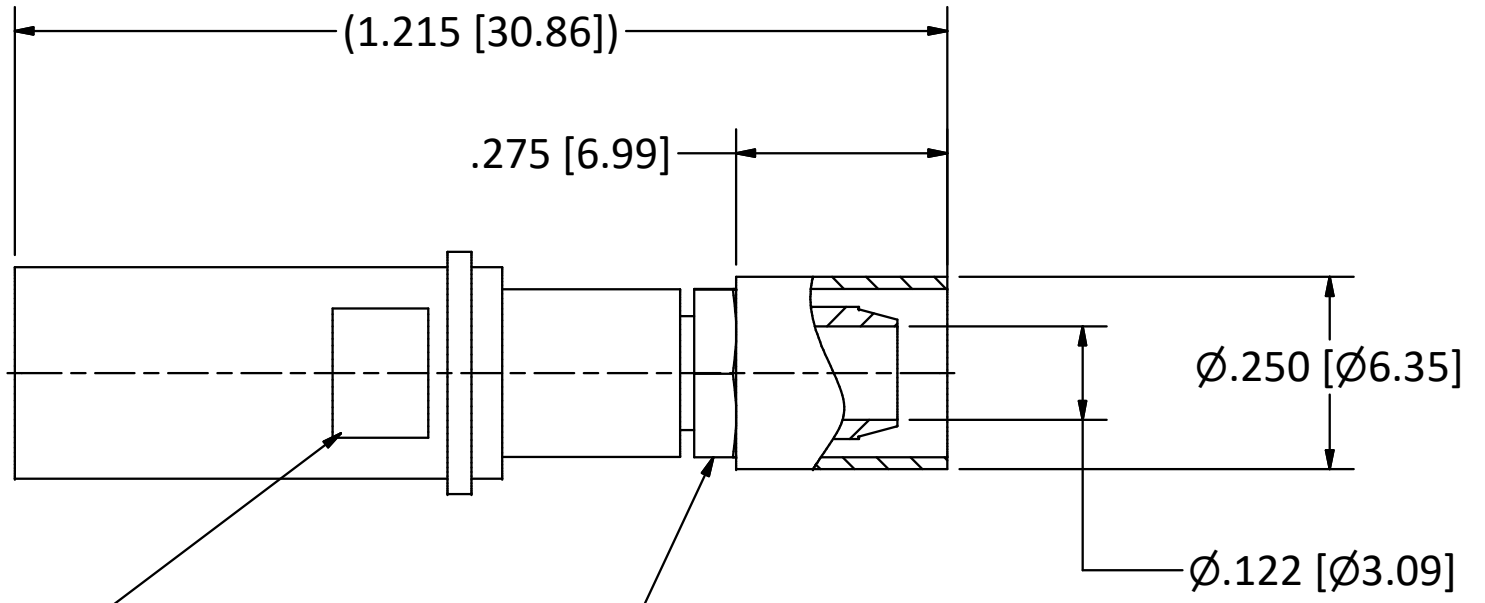
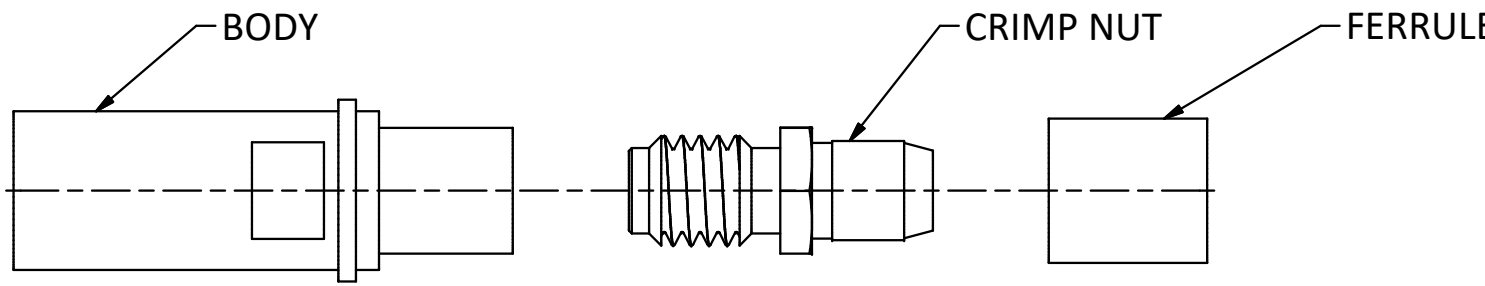


4

3

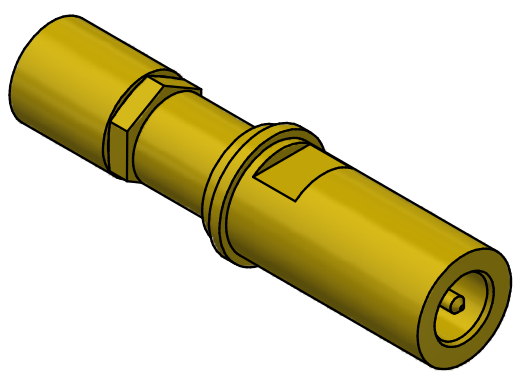
2

1



.218 [5.54] ACROSS FLATS  
 .218 [5.54] HEX

- NOTES:  
 1. SPECIFICATIONS PER IDS-68.  
 2. CRIMP NUT AND FERRULE SHIPPED LOOSE.  
 3. ACCOMMODATES RG-55, RG-142, OR RG-223 CABLE.  
 4. CRIMP USING .213 HEX DIE (M22520/5-05).  
**HOUSING:** ARINC 600 CONNECTOR PER MIL-C-83527/3, SIZE 8 CAVITY.



SCALE 2.5 : 1

REV	DESCRIPTION	DATE	BY
J	PER ECN 13749	04/08/2020	JEM
H	PER ECN 13447	08/07/2019	JEM
G	PER ECN 13062	08/06/18	JEM
F	PER ECN 12693	11/03/17	JEM
E	PER ECN 9688	12/09/08	JEM
D	PER ECN 8031	06/19/05	JM
C	PER ECN 3826	04/09/97	HN

This drawing embodies a proprietary design of The Phoenix Company of Chicago, Inc., Naugatuck, CT 06770. All design, manufacturing, reproduction, use, sale, and other rights regarding the same are expressly reserved. The information in this drawing may be covered completely or in part by patents and/or patents pending.

WARNING - THIS DOCUMENT CONTAINS TECHNICAL DATA WHOSE EXPORT IS RESTRICTED BY THE ARMS EXPORT CONTROL ACT (TITLE 22, U.S.C., SEC 2751, ET. SEQ.) OR THE EXPORT ADMINISTRATION ACT OF 1979, AS AMENDED, TITLE 50, U.S.C., APP 2401 ET SEQ. VIOLATIONS OF THESE EXPORT LAWS ARE SUBJECT TO SEVERE CRIMINAL PENALTIES. DISSEMINATE IN ACCORDANCE WITH PROVISIONS OF DOD DIRECTIVE 5230.25.

Filename: \Autodesk Inventor Data Base\Assemblies\78 Series\78-1080-0670-CU-Layout for C Sized Drawing.idw		
UNLESS OTHERWISE SPECIFIED, PHOENIX WORKMANSHIP STANDARDS APPLY DIMENSIONS IN INCHES OR (METRIC)	APPROVALS	DATE
	DRAWN JEM	2/28/1995
DO NOT SCALE PRINTS	CHECKED HN	2/28/1995
	QA	
TOLERANCES ARE: FRACTIONS: ± 1/64 DECIMALS: .XX ± .01 .XXX ± .003 ANGLES: ± 1/2°	MFG	
	ENGINEER JEM	2/28/1995
	APPROVED HN	2/28/1995

**The PHOENIX Company of Chicago, Inc.**  
 22 GREAT HILL RD., NAUGATUCK, CT 06770  
 WWW.PHOENIXOFCHICAGO.COM  
 PHONE: (800) 323-9562 FAX:(630) 206-1801

TITLE  
**PKZ® RECEPTACLE, CRIMP/CLAMP TERMINATION**

SIZE <b>B</b>	FSCM 58167	DWG NO <b>68-1080-1201</b>	REV J	PLATING OPT. A, B, C, D
SCALE 4 : 1		F.S.R. #	SHEET 1 OF 1	

4

3

2

1