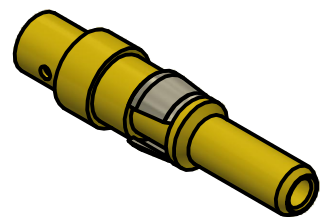


NOTES:

1. SPECIFICATIONS PER IDS-756.
2. ACCOMMODATES .086 S/R 75 OHM COAX OR EQUIVALENT FLEXIBLE CABLES.
3. ELECTRICAL RESULTS WHEN MATED TO 756 SERIES PkZ RECEPTACLE:
 - a) IMPEDANCE: 75Ω
 - b) FREQUENCY: DC TO 40 GHz. (OPERATIONAL)
 - c) VSWR: 1.30 : 1 (UP TO 18 GHz)
4. HOUSING: PX12 PLUG AND CUSTOM HOUSINGS, SIZE 12 CAVITY.
5. **DOES NOT MATE WITH OTHER INDUSTRY-STANDARD SIZE 12 CONTACTS.**



SCALE 3 : 1

This drawing embodies a proprietary design of The Phoenix Company of Chicago, Inc., Naugatuck, CT 06770. All design, manufacturing, reproduction, use, sale, and other rights regarding the same are expressly reserved. The information in this drawing may be covered completely or in part by patents and/or patents pending.				WARNING - THIS DOCUMENT CONTAINS TECHNICAL DATA WHOSE EXPORT IS RESTRICTED BY THE ARMS EXPORT CONTROL ACT (TITLE 22, U.S.C., SEC 2751, ET. SEQ.) OR THE EXPORT ADMINISTRATION ACT OF 1979, AS AMENDED, TITLE 50, U.S.C., APP 2401 ET SEQ. VIOLATIONS OF THESE EXPORT LAWS ARE SUBJECT TO SEVERE CRIMINAL PENALTIES. DISSEMINATE IN ACCORDANCE WITH PROVISIONS OF DOD DIRECTIVE 5230.25.			UNLESS OTHERWISE SPECIFIED, PHOENIX WORKMANSHIP STANDARDS APPLY DIMENSIONS IN INCHES OR [METRIC]			APPROVALS DATE		The PHOENIX Company of Chicago, Inc. 22 GREAT HILL RD., NAUGATUCK, CT 06770 WWW.PHOENIXOFCHICAGO.COM PHONE: (800) 323-9562 FAX:(630) 206-1801	
							DO NOT SCALE PRINTS TOLERANCES ARE: FRACTIONS: $\pm 1/64$ DECIMALS: $.XX \pm .01$ $.XXX \pm .003$ ANGLES: $\pm 1/2^\circ$			DRAWN SPS 7/16/2024	CHECKED SJG 7/17/2024		
A REL. PER ECN 14477 8/22/2025 DRW		01 PRELIMINARY 7/18/2024 SPS		REV. DESCRIPTION DATE BY		SIZE B	FSCM 58167	DWG NO 756-0020-0860	REV A	PLATING OPT. A, B, C, D	SCALE 5 : 1 F.S.R. # SHEET 1 OF 1		