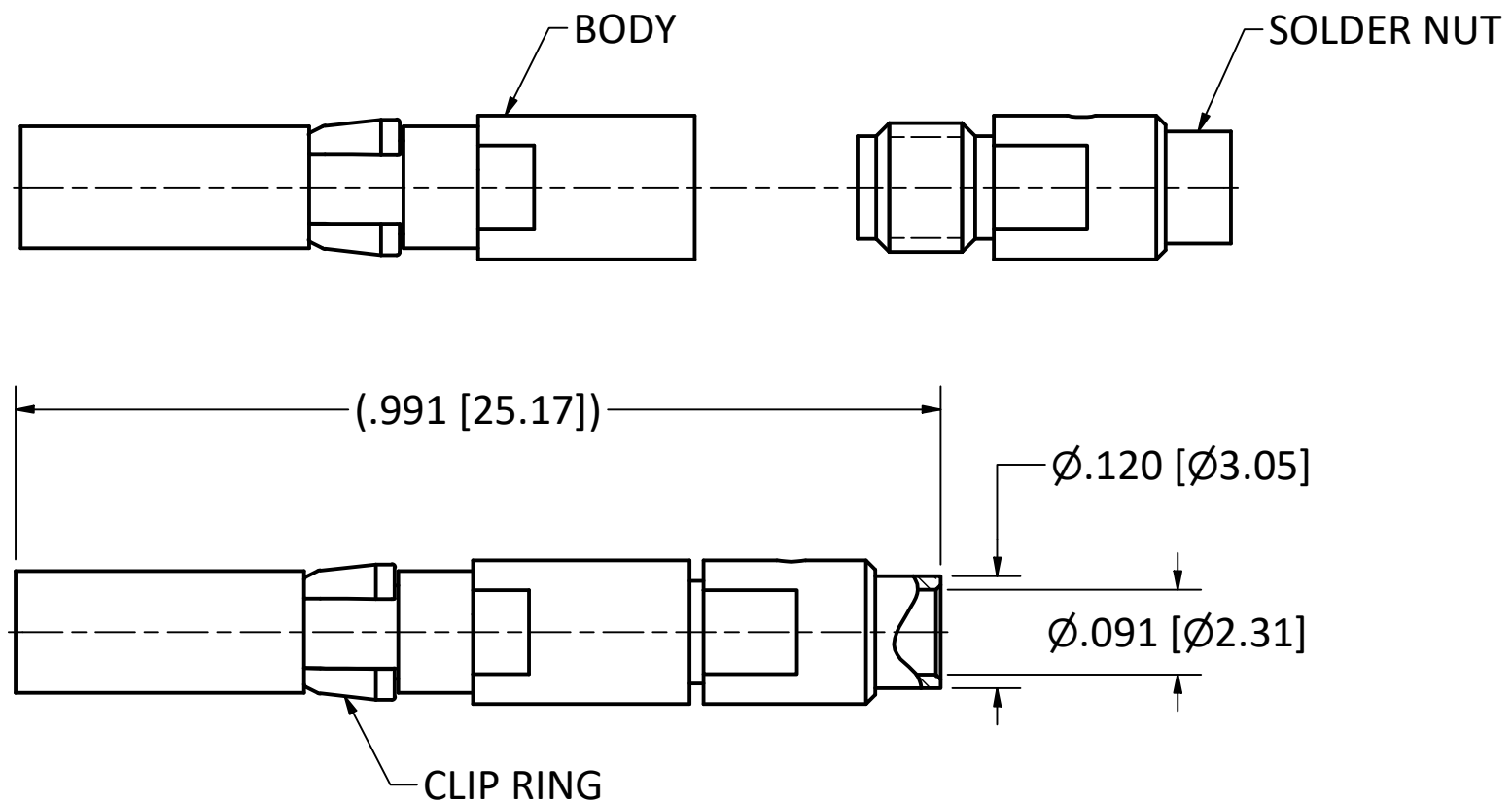


4

3

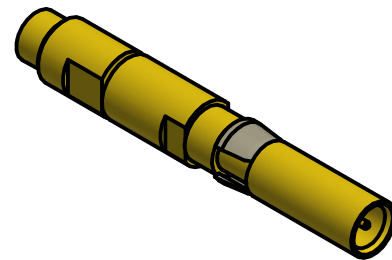
2

1



NOTES:

- 1. SPECIFICATIONS PER IDS-756.
- 2. SOLDER NUT SHIPPED LOOSE.
- 3. ACCOMMODATES .086 S/R 75 OHM COAX OR EQUIVALENT FLEXIBLE CABLES.
- 4. ELECTRICAL RESULTS WHEN MATED TO 756 SERIES PKZ PLUG:
 - a) IMPEDANCE: 75Ω
 - b) FREQUENCY: DC TO 40 GHz. (OPERATIONAL)
 - c) VSWR: 1.30 : 1 (UP TO 18 GHz)
- 5. HOUSING: PX12 AND CUSTOM HOUSINGS, SIZE 12 CAVITY.
- 6. DOES NOT MATE WITH OTHER INDUSTRY-STANDARD SIZE 12 CONTACTS.



SCALE 2.5 : 1

This drawing embodies a proprietary design of The Phoenix Company of Chicago, Inc., Naugatuck, CT 06770. All design, manufacturing, reproduction, use, sale, and other rights regarding the same are expressly reserved. The information in this drawing may be covered completely or in part by patents and/or patents pending.				WARNING - THIS DOCUMENT CONTAINS TECHNICAL DATA WHOSE EXPORT IS RESTRICTED BY THE ARMS EXPORT CONTROL ACT (TITLE 22, U.S.C., SEC 2751, ET. SEQ.) OR THE EXPORT ADMINISTRATION ACT OF 1979, AS AMENDED, TITLE 50, U.S.C., APP 2401 ET SEQ. VIOLATIONS OF THESE EXPORT LAWS ARE SUBJECT TO SEVERE CRIMINAL PENALTIES. DISSEMINATE IN ACCORDANCE WITH PROVISIONS OF DOD DIRECTIVE 5230.25.				UNLESS OTHERWISE SPECIFIED, PHOENIX WORKMANSHIP STANDARDS APPLY DIMENSIONS IN INCHES OR [METRIC]		APPROVALS		DATE	The PHOENIX Company of Chicago, Inc. 22 GREAT HILL RD., NAUGATUCK, CT 06770 WWW.PHOENIXOFCHICAGO.COM PHONE: (800) 323-9562 FAX:(630) 206-1801		
								DO NOT SCALE PRINTS		DRAWN		7/17/2024			
TOLERANCES ARE: FRACTIONS: ± 1/64 DECIMALS: .XX ± .01 .XXX ± .003 ANGLES: ± 1/2°		CHECKED		DATE		TITLE PKZ® RECEPTACLE, 75 OHM, SOLDER/CLAMP TERMINATION									
$\sqrt{\text{32}}$		QA		7/17/2024											
		MFG		8/19/2025											
		ENGINEER		7/17/2024											
APPROVED		DATE		7/17/2024		SIZE	FSCM	DWG NO	REV	PLATING OPT.					
SHEET 1 OF 1		SHEET 1 OF 1		SHEET 1 OF 1		B	58167	756-1030-0860	A	A, B, C, D					
REV.		DESC		DATE		BY		SCALE		5 : 1		F.S.R. #		SHEET 1 OF 1	
A	REL. PER ECN 14477	DRW	8/22/2025												
01	PRELIMINARY	7/22/2024	SPS												

4

3

2

1