

CABLE ASSEMBLY PROCEDURE

P/N 76-008X-1082

PAGE 1 OF 1 DATE: 07/19/13

DRAWN: JEM APPROVED: JEM

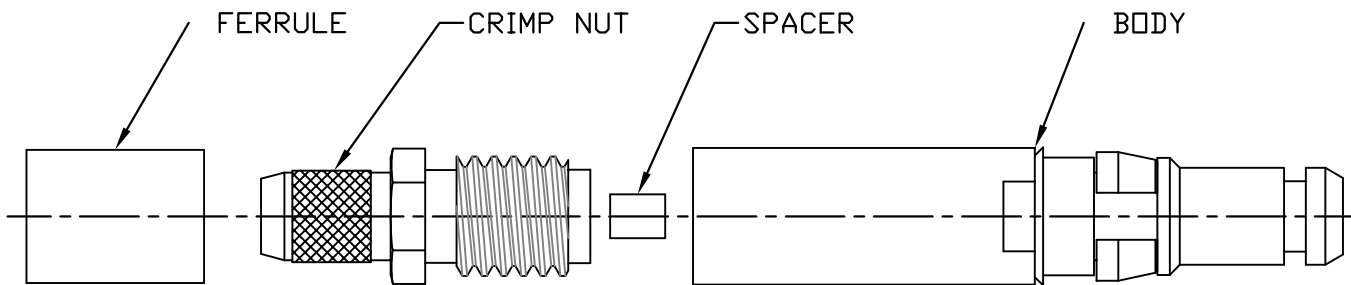
FOR USE WITH BELDEN 1855X CABLE

# PALEO CONNECTOR

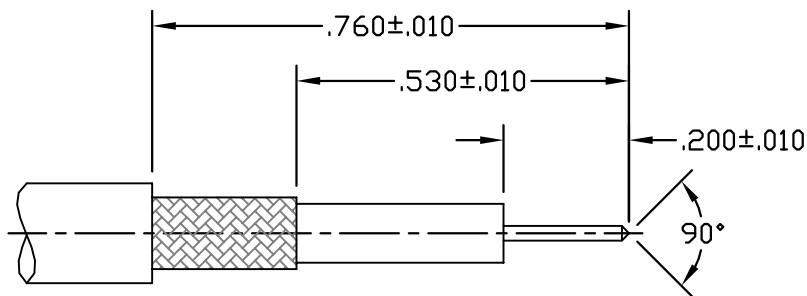
22 GREAT HILL ROAD, NAUGATUCK, CT. 06770  
 PHONE: (203) 729-9090 FAX: (203) 723-1794

REV	DESCRIPTION	DATE	APPR
A	REL ECN 11704	07/19/13	JEM
B	PER ECN 11825	12/18/13	JEM
C	PER ECN 13058	08/02/18	JEM
D	PER ECN 13165	10/25/18	JEM

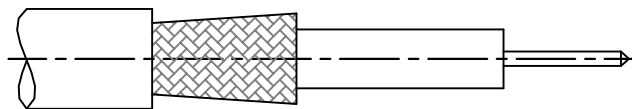
NOTES: 1) DIMENSIONS ARE IN INCHES UNLESS OTHERWISE SPECIFIED [METRIC].



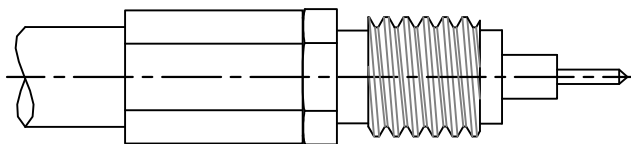
STEP 1  
 TRIM CABLE TO DIMENSIONS SHOWN.  
 POINT CENTER CONDUCTOR.



STEP 2  
 SLIDE FERRULE OVER CABLE. FLARE  
 BRAID BY ROTATING CABLE  
 DIELECTRIC.



STEP 3  
 SLIDE CRIMP NUT OVER CABLE  
 DIELECTRIC AND UNDER BRAID UNTIL  
 DIELECTRIC IS FLUSH WITH CRIMP  
 NUT. SLIDE FERRULE AGAINST CRIMP  
 NUT SHOULDER AND CRIMP USING .178  
 HEX CRIMP DIE (M22520/5-05).



STEP 4  
 INSERT CABLE INTO BODY  
 AND TORQUE TO 7-10  
 INCH-LBS.

