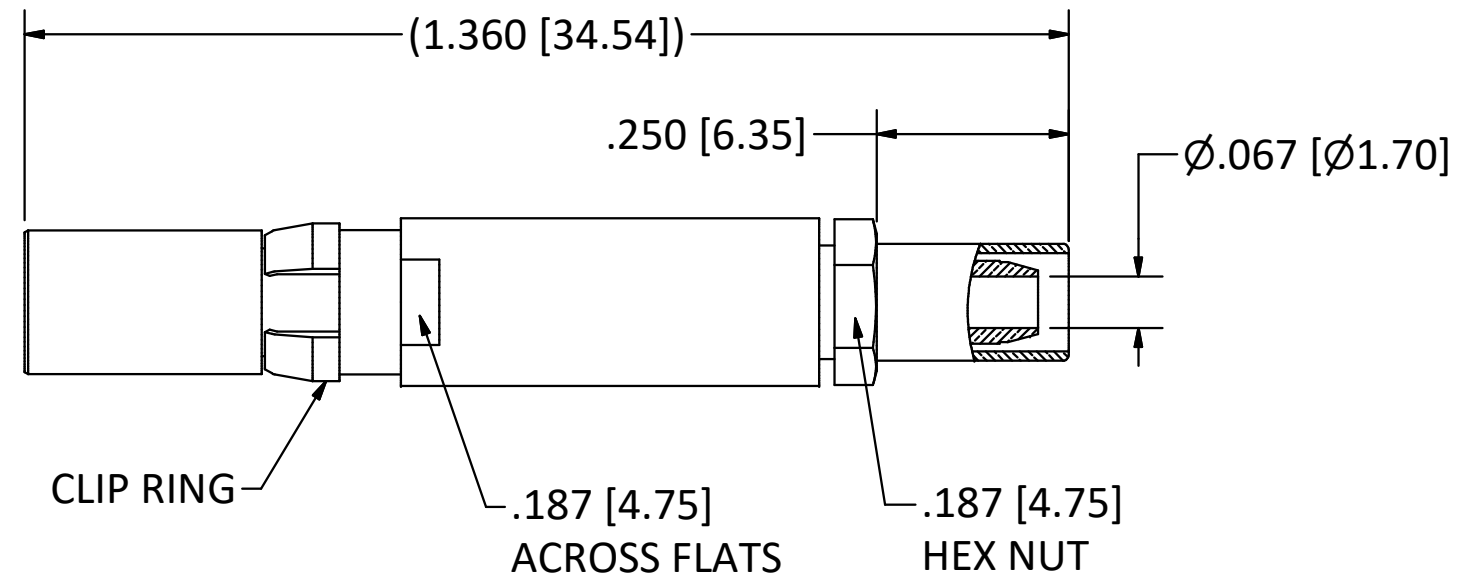
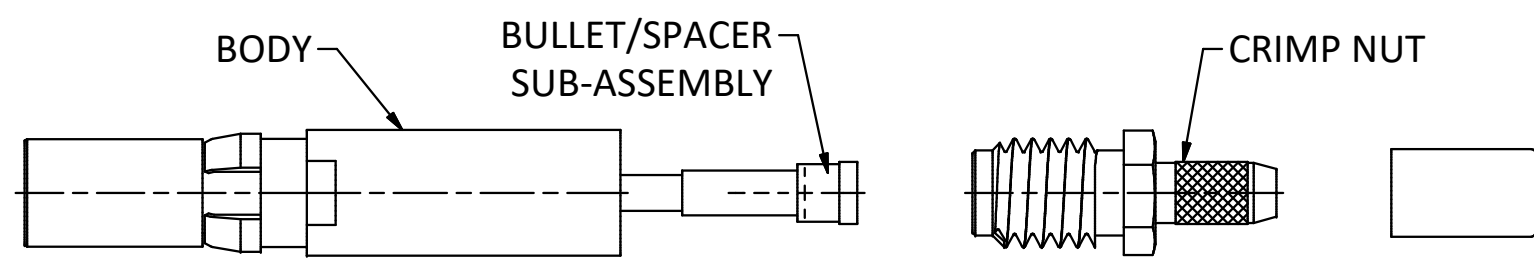


4

3

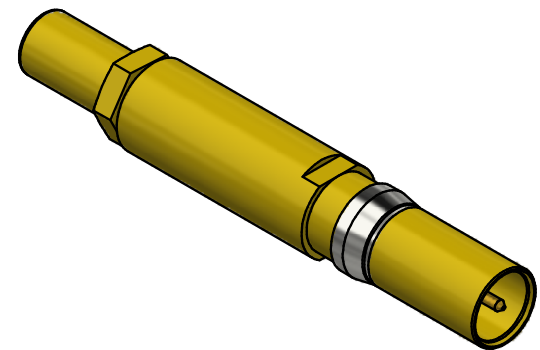
2

1



NOTES:

- 1. SPECIFICATIONS PER IDS-76.
 - 2. FERRULE, CRIMP NUT, AND BULLET/SPACER SUB-ASSEMBLY SHIPPED LOOSE.
 - 3. ACCOMMODATES RG-179 CABLE.
 - 4. CRIMP USING .128 HEX DIE (M22520/5-03).
- HOUSING:** D-SUBMINIATURE, SIZE 8 CAVITY.



SCALE 2.5 : 1

REV.	DESCRIPTION	DATE	BY
F	PER ECN 14159	5/4/2022	
E	PER ECN 13291	04/23/2019	JEM
D	ECN 13104	9/17/18	JEM
C	ECN 13058	8/2/18	JEM
B	ECN 11831	1/3/14	JEM
A	ECN 11756	8/14/13	JEM

This drawing embodies a proprietary design of The Phoenix Company of Chicago, Inc., Naugatuck, CT 06770. All design, manufacturing, reproduction, use, sale, and other rights regarding the same are expressly reserved. The information in this drawing may be covered completely or in part by patents and/or patents pending.

WARNING - THIS DOCUMENT CONTAINS TECHNICAL DATA WHOSE EXPORT IS RESTRICTED BY THE ARMS EXPORT CONTROL ACT (TITLE 22, U.S.C., SEC 2751, ET. SEQ.) OR THE EXPORT ADMINISTRATION ACT OF 1979, AS AMENDED, TITLE 50, U.S.C., APP 2401 ET SEQ. VIOLATIONS OF THESE EXPORT LAWS ARE SUBJECT TO SEVERE CRIMINAL PENALTIES. DISSEMINATE IN ACCORDANCE WITH PROVISIONS OF DOD DIRECTIVE 5230.25.

Filename: ver2\Autodesk Inventor Data Base\Assemblies\76 Series\76-1080-0670-CU.idw		
UNLESS OTHERWISE SPECIFIED, PHOENIX WORKMANSHIP STANDARDS APPLY DIMENSIONS IN INCHES OR (METRIC)	APPROVALS	DATE
	DRAWN MS	4/1/2011
DO NOT SCALE PRINTS	CHECKED JEM	4/1/2011
	QA	
TOLERANCES ARE: FRACTIONS: ± 1/64 DECIMALS: .XX ± .01 .XXX ± .003 ANGLES: ± 1/2°	MFG	
	ENGINEER MS	4/1/2011
	APPROVED JEM	4/1/2011

The PHOENIX Company of Chicago, Inc.
 22 GREAT HILL RD., NAUGATUCK, CT 06770
 WWW.PHOENIXOFCHICAGO.COM
 PHONE: (800) 323-9562 FAX:(630) 206-1801

TITLE
75 OHM, PkZ® RECEPTACLE, CRIMP/CLAMP TERMINATION

SIZE B	FSCM 58167	DWG NO 76-1080-0670	REV F	PLATING OPT. A, B, C, D
SCALE 2.5 : 1	F.S.R. #	SHEET 1	OF 1	

4

3

2

1