

CABLE ASSEMBLY PROCEDURE

P/N 76-1080-1082

PAGE 1 OF 1 DATE: 08/29/13

DRAWN: JEM APPROVED: JEM

FOR USE WITH BELDEN 1855 CABLE

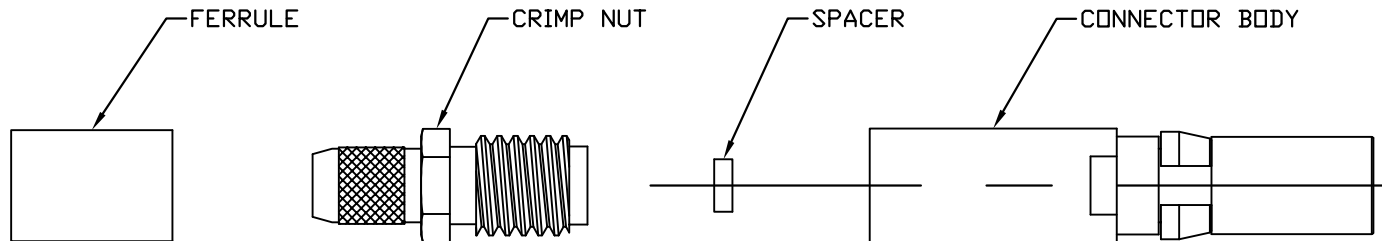
PALEO CONNECTOR

22 GREAT HILL ROAD, NAUGATUCK, CT. 06770
 PHONE: (203) 729-9090 FAX: (203) 723-1794

REV	DESCRIPTION	DATE	APPR
C	PER ECN 12818	03/28/18	RMB
D	PER ECN 13058	08/02/18	JEM
E	PER ECN 13086	09/10/18	JEM
F	PER ECN 13226	01/28/19	JEM

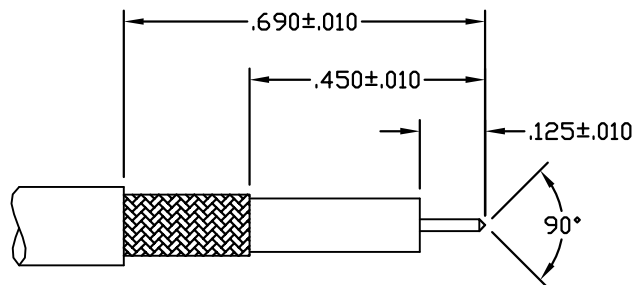
NOTES:

1) DIMENSIONS ARE IN INCHES UNLESS OTHERWISE SPECIFIED [METRIC].



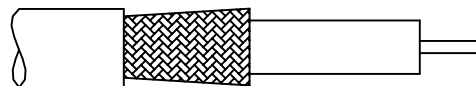
STEP 1

TRIM CABLE TO DIMENSIONS SHOWN.
 POINT CENTER CONDUCTOR.



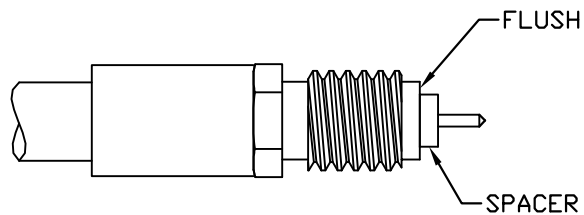
STEP 2

SLIDE FERRULE OVER CABLE. FLARE BRAID
 BY ROTATING CABLE DIELECTRIC.



STEP 3

INSTALL CRIMP NUT ONTO CABLE AND UNDER
 THE BRAID UNTIL CABLE DIELECTRIC IS FLUSH
 WITH CRIMP NUT. SLIDE FERRULE AGAINST
 SHOULDER OF CRIMP NUT. CRIMP FERRULE
 USING .178 HEX NUT (M22520/5-05). SLIDE
 SPACER OVER CENTER CONDUCTOR.



STEP 4

INSERT ABOVE CABLE INTO CONNECTOR BODY.
 TORQUE TO 7-10 INCH-LBS.

