

4

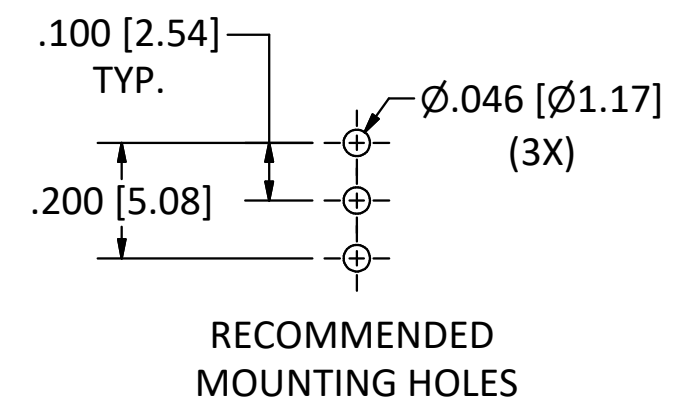
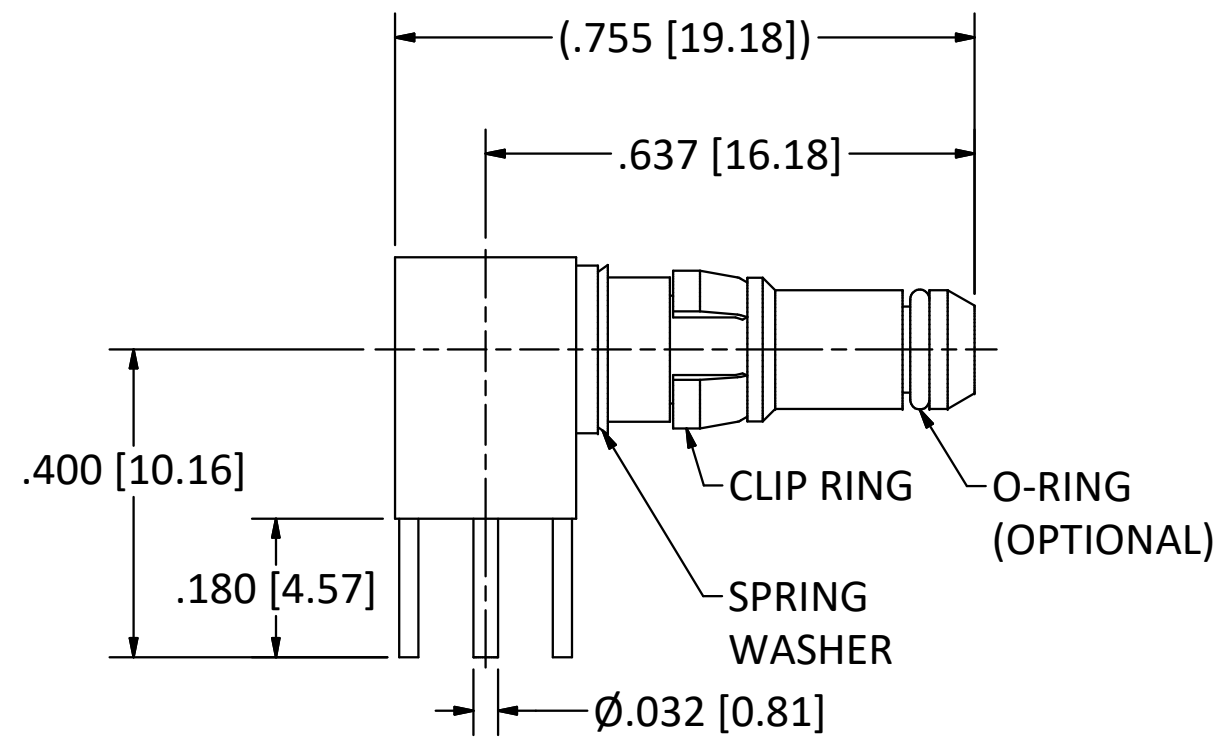
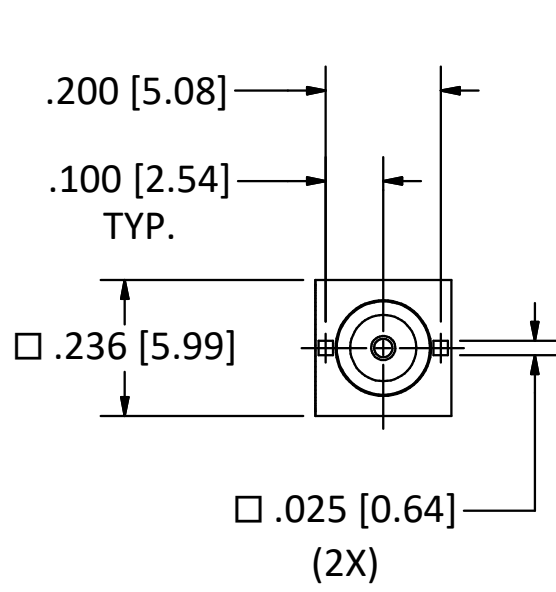
3

2

1

B

B



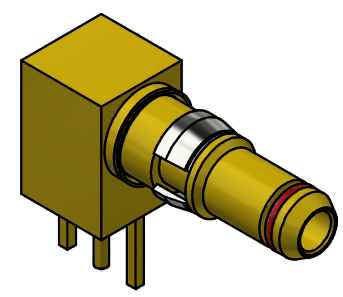
NOTES:

1. SPECIFICATIONS PER IDS-76.
HOUSING: D-SUBMINIATURE, SIZE 8 CAVITY, SHELL SIZE A, B, C, & E. SHORT FOOTPRINT.

PART NUMBER	O-RING OPTIONS
76-2450-83	NONE
76-2451-83	ENVIRONMENTAL
76-2453-83	EMI SPRING
76-2455-83	GROUNDING RING

A

A



SCALE 2.5 : 1

REV	DESCRIPTION	DATE	BY
A	ECN 13093	9/10/18	JEM
01	PRELIMINARY	6/4/15	RMB

This drawing embodies a proprietary design of The Phoenix Company of Chicago, Inc., Naugatuck, CT 06770. All design, manufacturing, reproduction, use, sale, and other rights regarding the same are expressly reserved. The information in this drawing may be covered completely or in part by patents and/or patents pending.

WARNING - THIS DOCUMENT CONTAINS TECHNICAL DATA WHOSE EXPORT IS RESTRICTED BY THE ARMS EXPORT CONTROL ACT (TITLE 22, U.S.C., SEC 2751, ET. SEQ.) OR THE EXPORT ADMINISTRATION ACT OF 1979, AS AMENDED, TITLE 50, U.S.C., APP 2401 ET SEQ. VIOLATIONS OF THESE EXPORT LAWS ARE SUBJECT TO SEVERE CRIMINAL PENALTIES. DISSEMINATE IN ACCORDANCE WITH PROVISIONS OF DOD DIRECTIVE 5230.25.

Filename: ver2\Autodesk Inventor Data Base\Assemblies\76 Series\76-245X-83-CU.idw		
UNLESS OTHERWISE SPECIFIED, PHOENIX WORKMANSHIP STANDARDS APPLY DIMENSIONS IN INCHES OR (METRIC) DO NOT SCALE PRINTS TOLERANCES ARE: FRACTIONS: ± 1/64 DECIMALS: .XX ± .01 .XXX ± .003 ANGLES: ± 1/2°	APPROVALS	DATE
	DRAWN RVR	4/30/1991
	CHECKED JEM	4/30/1991
	QA	
	MFG	
ENGINEER HN	4/30/1991	
APPROVED JEM	4/30/1991	

The PHOENIX Company of Chicago, Inc.
 22 GREAT HILL RD., NAUGATUCK, CT 06770
 WWW.PHOENIXOFCHICAGO.COM
 PHONE: (800) 323-9562 FAX:(630) 206-1801

TITLE
75 OHM, PkZ® RIGHT ANGLE PLUG, PRINTED CIRCUIT MOUNT

SIZE B	FSCM 58167	DWG NO 76-245X-83	REV A	PLATING OPT. A, B, C, D
------------------	---------------	-----------------------------	----------	----------------------------

SCALE 2.5 : 1 F.S.R. # SHEET 1 OF 1

4

3

2

1