

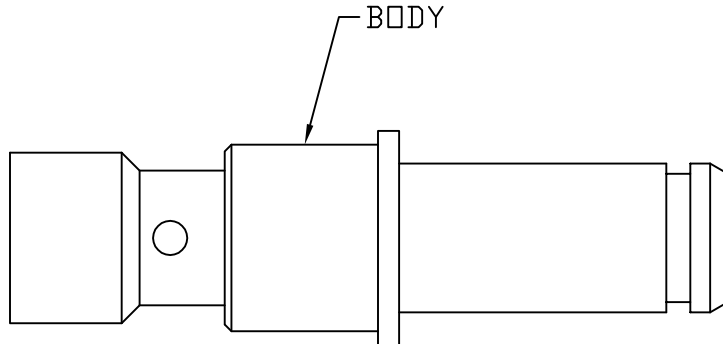
CABLE ASSEMBLY PROCEDURE	
P/N	78-0020-1481
PAGE 1 OF 1	DATE: 05/18/00
DRAWN: JEM	APPROVED: HN
FOR USE WITH IW 1801-C CABLE	

The **PHOENIX** Company of Chicago™
 22 GREAT HILL RD., NAUGATUCK, CT 06770
 WWW.PHOENIXOFCHICAGO.COM
 PHONE: (203) 729-9090 FAX: (203) 723-1794

REV	DESCRIPTION	DATE	APPR
B	PER ECN 5487	06/06/00	HN
C	PER ECN 12755	01/03/18	JEM
D	PER ECN 13091	09/11/18	JEM
E	PER ECN 13494	9/16/19	JEM

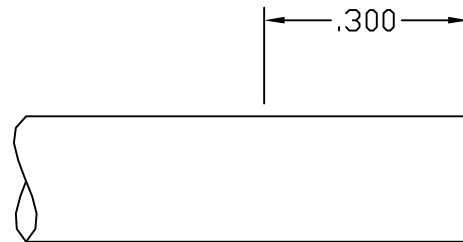
NOTES:

1) DIMENSIONS ARE IN INCHES UNLESS OTHERWISE SPECIFIED [METRIC].



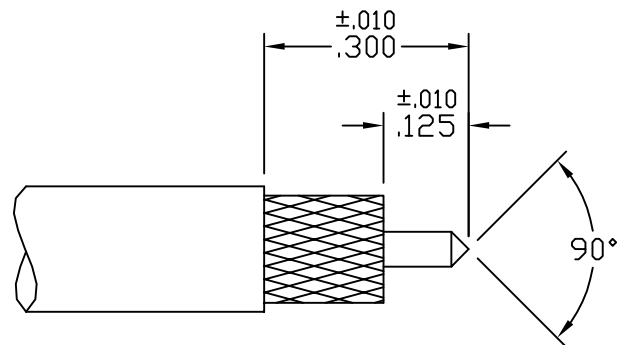
STEP 1

FLUX END OF CABLE. STICK CABLE INTO SOLDER POT TO DIMENSIONS SHOWN, FOR 3 SECONDS MAX.



STEP 2

TRIM CABLE TO DIMENSIONS SHOWN. POINT CENTER CONDUCTOR.



STEP 3

SLIDE CONNECTOR ONTO CABLE UNTIL CABLE BOTTOMS IN BODY. SOLDER BODY TO CABLE BRAID THRU SIDE HOLE. CLEAN SOLDER JOINT.

