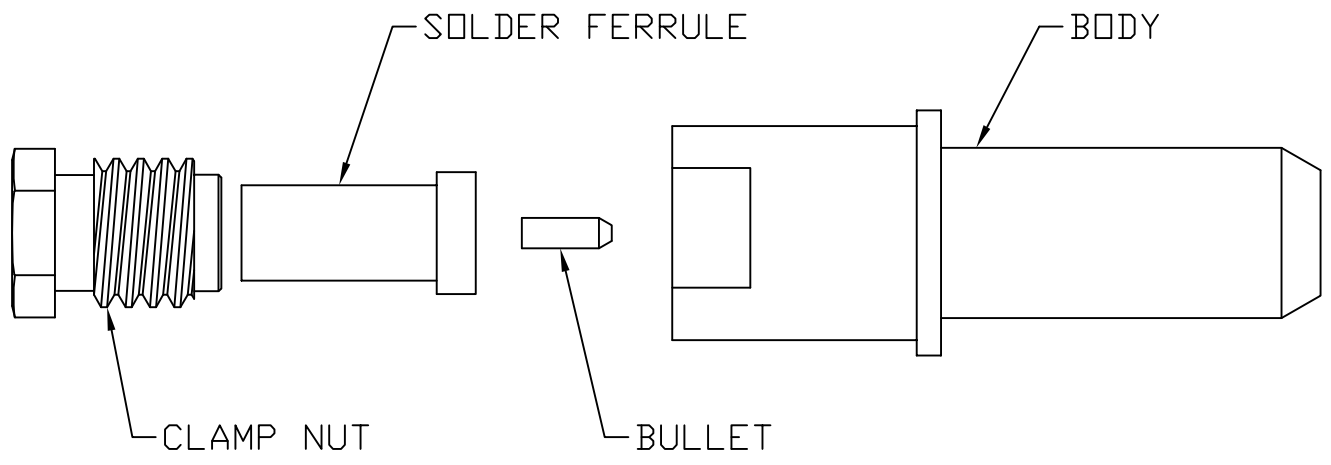


CABLE ASSEMBLY PROCEDURE	
P/N	78-0030-0860
PAGE 1 OF 1	DATE: 08/06/98
DRAWN: JEM	APPROVED: HN
FOR USE WITH M17/133 CABLE	

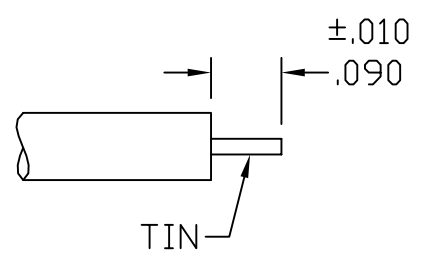
PALEO
CONNECTOR

22 GREAT HILL ROAD, NAUGATUCK, CT. 06770
PHONE: (203) 729-9090 FAX: (203) 723-1794

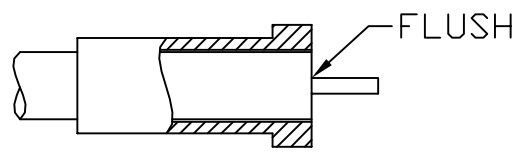
REV	DESCRIPTION	DATE	APPR
B	PER ECN 6696	08/01/02	HN
C	PER ECN 10099	12/3/09	JEM
D	PER ECN 11018	06/28/11	JEM
E	PER ECN 13452	8/13/19	JEM



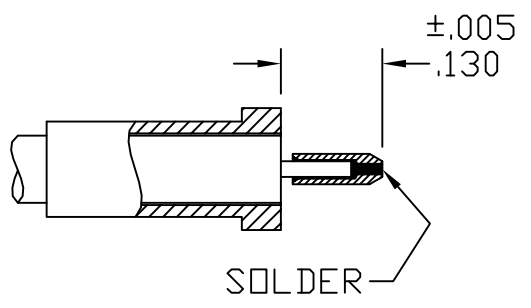
STEP 1
TRIM CABLE TO DIMENSIONS SHOWN.
TIN DIP CENTER CONDUCTOR ONLY.



STEP 2
SLIDE CLAMP NUT AND SOLDER FERRULE
ONTO CABLE. SET COUNTERBORE IN
SOLDER FERRULE FLUSH WITH CABLE
AND SOLDER. CLEAN SOLDER JOINT.



STEP 3
SLIDE SPACER AND BULLET OVER CENTER
CONDUCTOR OF CABLE. SOLDER BULLET
TO CABLE. CLEAN SOLDER JOINT.



STEP 4
INSERT CABLE ASSEMBLY INTO
BODY AND TIGHTEN CLAMP
NUT TO 90-100 IN-OZS.

