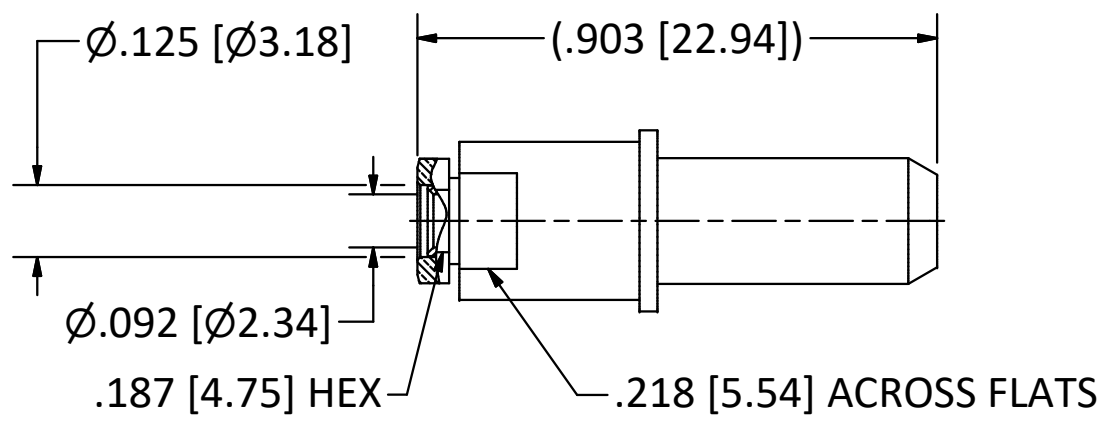
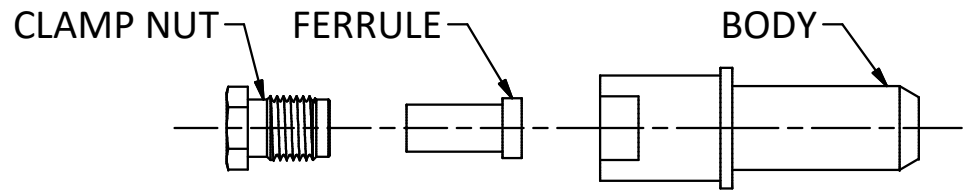


4

3

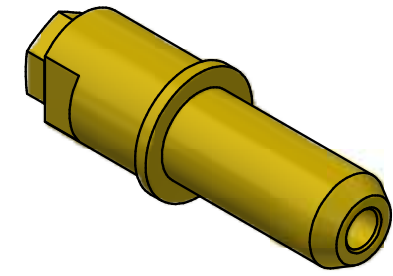
2

1



NOTES:

- 1. SPECIFICATIONS PER IDS-78.
 - 2. CLAMP NUT AND FERRULE SHIPPED LOOSE.
 - 3. ACCOMMODATES RG-405 (.086 SEMI-RIGID) OR EQUIVALENT FLEXIBLE CABLE.
 - 4. ELECTRICAL RESULTS WHEN MATE WITH 78 SERIES PkZ® RECEPTACLE:
 - a) FREQUENCY: DC TO 32 GHz.
 - b) VSWR: 1.50 : 1 (MAX.)
- HOUSING:** MIL-C-38999 SERIES I-IV AND MIGHTY MOUSE SERIES 80, SIZE 8 CAVITY.



SCALE 2.5 : 1

REV	DESCRIPTION	DATE	BY
F	PER ECN 14088	03/08/2022	SPS
E	PER ECN 13452	8/13/19	JEM
D	PER ECN 11018	6/28/11	JEM
C	PER ECN 10099	12/3/9	JEM
B	PER ECN 6696	8/1/02	HN
A	PER ECN 4621	8/4/98	HN

This drawing embodies a proprietary design of The Phoenix Company of Chicago, Inc., Naugatuck, CT 06770. All design, manufacturing, reproduction, use, sale, and other rights regarding the same are expressly reserved. The information in this drawing may be covered completely or in part by patents and/or patents pending.

WARNING - THIS DOCUMENT CONTAINS TECHNICAL DATA WHOSE EXPORT IS RESTRICTED BY THE ARMS EXPORT CONTROL ACT (TITLE 22, U.S.C., SEC 2751, ET. SEQ.) OR THE EXPORT ADMINISTRATION ACT OF 1979, AS AMENDED, TITLE 50, U.S.C., APP 2401 ET SEQ. VIOLATIONS OF THESE EXPORT LAWS ARE SUBJECT TO SEVERE CRIMINAL PENALTIES. DISSEMINATE IN ACCORDANCE WITH PROVISIONS OF DOD DIRECTIVE 5230.25.

Filename: ver2\Autodesk Inventor Data Base\Assemblies\78 Series\78-0030-0860.idw		
UNLESS OTHERWISE SPECIFIED, PHOENIX WORKMANSHIP STANDARDS APPLY DIMENSIONS IN INCHES OR (METRIC)	APPROVALS	DATE
	DRAWN JEM	4/8/1998
DO NOT SCALE PRINTS	CHECKED HN	4/8/1998
	QA	
TOLERANCES ARE: FRACTIONS: ± 1/64 DECIMALS: .XX ± .01 .XXX ± .003 ANGLES: ± 1/2°	MFG	
	ENGINEER JEM	4/8/1998
	APPROVED HN	4/8/1998

The PHOENIX Company of Chicago, Inc.			
22 GREAT HILL RD., NAUGATUCK, CT 06770 WWW.PHOENIXOFCHICAGO.COM PHONE: (800) 323-9562 FAX:(630) 206-1801			
TITLE SIZE 8 PkZ® PLUG, SOLDER/CLAMP, FOR RG405 CABLE			
SIZE B	FSCM 58167	DWG NO 78-0030-0860	REV F
SCALE 3 : 1	F.S.R. #	SHEET 1	PLATING OPT. A, B, C, D
		OF 1	

4

3

2

1