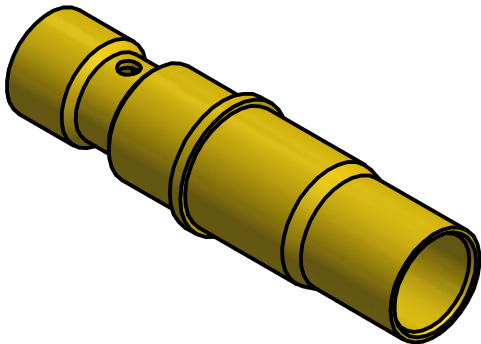



- NOTES:
- 1. SPECIFICATIONS PER IDS-78.
  - 2. ACCOMMODATES INSULATED WIRE 1801-C CABLE.
  - 3. ELECTRICAL RESULTS WHEN MATED WITH 78 SERIES PkZ® PLUG:
    - a) FREQUENCY: DC TO 6 GHz.
    - b) VSWR: 1.25 : 1
  - 4. HOUSING: MIL-DTL-38999 SERIES I, III, & IV AND MIGHTY MOUSE SERIES 80, SIZE 8 CAVITY.
  - 5. DOES NOT MATE WITH OTHER INDUSTRY-STANDARD SIZE 8 CONTACTS.



SCALE 2.5 : 1

				This drawing embodies a proprietary design of The Phoenix Company of Chicago, Inc., Naugatuck, CT 06770. All design, manufacturing, reproduction, use, sale, and other rights regarding the same are expressly reserved. The information in this drawing may be covered completely or in part by patents and/or patents pending.	WARNING - THIS DOCUMENT CONTAINS TECHNICAL DATA WHOSE EXPORT IS RESTRICTED BY THE ARMS EXPORT CONTROL ACT (TITLE 22, U.S.C., SEC 2751, ET. SEQ.) OR THE EXPORT ADMINISTRATION ACT OF 1979, AS AMENDED, TITLE 50, U.S.C., APP 2401 ET SEQ. VIOLATIONS OF THESE EXPORT LAWS ARE SUBJECT TO SEVERE CRIMINAL PENALTIES. DISSEMINATE IN ACCORDANCE WITH PROVISIONS OF DOD DIRECTIVE 5230.25.					<i>The <b>PHOENIX</b> Company of Chicago, Inc.</i>													
						UNLESS OTHERWISE SPECIFIED, PHOENIX WORKMANSHIP STANDARDS APPLY DIMENSIONS IN INCHES OR [METRIC]		APPROVALS		DATE		22 GREAT HILL RD., NAUGATUCK, CT 06770 WWW.PHOENIXOFCHICAGO.COM PHONE: (800) 323-9562 FAX:(630) 206-1801											
						DO NOT SCALE PRINTS		DRAWN		CA		10/11/2019		TITLE  PkZ® RECEPTACLE, DIRECT SOLDER TERMINATION									
								CHECKED		JEM		10/11/2019											
								QA															
								MFG															
						TOLERANCES ARE: FRACTIONS: ± 1/64 DECIMALS: .XX ± .01 .XXX ± .003 ANGLES: ± 1/2°		ENGINEER		CA		10/11/2019		SIZE		FSCM		DWG NO		REV		PLATING OPT.	
						<div>32</div> 		APPROVED		JEM		10/11/2019		B		58167		78-1020-1481		F		A, B, C, D	
												SCALE		3 : 1		F.S.R. #		SHEET 1		OF 1			
F	PER ECN 14232	11/26/2024	DW																				
E	PER ECN 13529	10/14/19	JEM																				
D	PER ECN 12755	1/2/18	JEM																				
C	PER ECN 9684	12/8/08	JEM																				
B	PER ECN 5487	6/6/00	HN																				
A	REL ECN 5478	5/15/00	HN																				
REV	DESCRIPTION	DATE	BY																				