

4

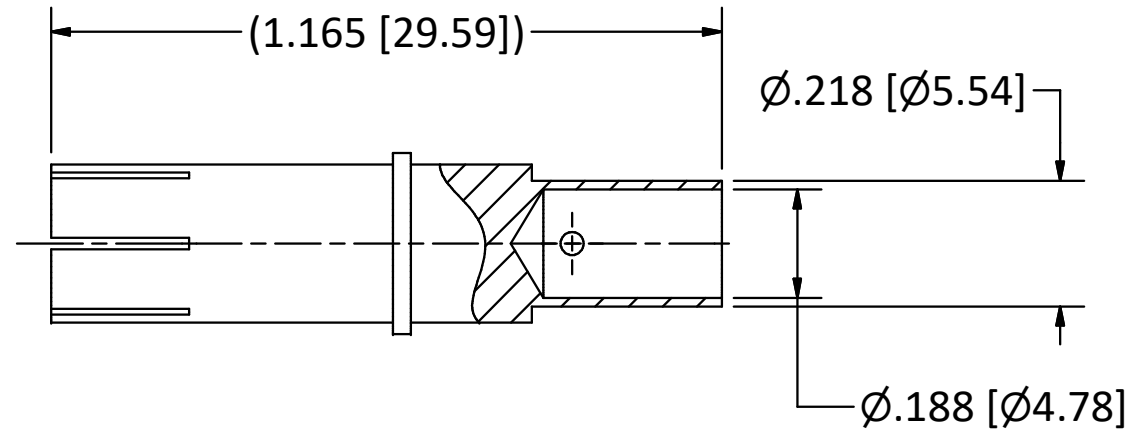
3

2

1

B

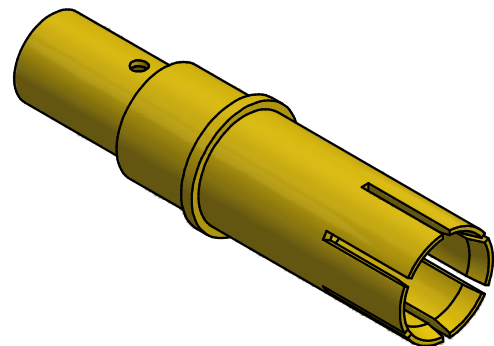
B



NOTES:

- 1. SPECIFICATIONS PER IDS-78.
- 2. ACCOMMODATES 8 AWG STRANDED WIRE.

HOUSING: MIL-C-38999 SERIES I, III, & IV AND MIGHTY MOUSE SERIES 80, SIZE 8 CAVITY.



SCALE 2.5 : 1

4

3

2

1

A

A

<table border="1"> <tr><td>B</td><td>PER ECN 13542</td><td>10/21/19</td><td>JEM</td></tr> <tr><td>A</td><td>PER ECN 4608</td><td>8/3/98</td><td>HN</td></tr> <tr><td>01</td><td>PROTOTYPE</td><td>7/20/98</td><td>HN</td></tr> <tr><td>REV</td><td>DESCRIPTION</td><td>DATE</td><td>BY</td></tr> </table>				B	PER ECN 13542	10/21/19	JEM	A	PER ECN 4608	8/3/98	HN	01	PROTOTYPE	7/20/98	HN	REV	DESCRIPTION	DATE	BY	<p>This drawing embodies a proprietary design of The Phoenix Company of Chicago, Inc., Naugatuck, CT 06770. All design, manufacturing, reproduction, use, sale, and other rights regarding the same are expressly reserved. The information in this drawing may be covered completely or in part by patents and/or patents pending.</p>	<p>WARNING - THIS DOCUMENT CONTAINS TECHNICAL DATA WHOSE EXPORT IS RESTRICTED BY THE ARMS EXPORT CONTROL ACT (TITLE 22, U.S.C., SEC 2751, ET. SEQ.) OR THE EXPORT ADMINISTRATION ACT OF 1979, AS AMENDED, TITLE 50, U.S.C., APP 2401 ET SEQ. VIOLATIONS OF THESE EXPORT LAWS ARE SUBJECT TO SEVERE CRIMINAL PENALTIES. DISSEMINATE IN ACCORDANCE WITH PROVISIONS OF DOD DIRECTIVE 5230.25.</p>	<p>Filename: \\Autodesk Inventor Data Base\Assemblies\78 Series\78-1080-0670-CU-Layout for C Sized Drawing.idw</p> <table border="1"> <tr><th>UNLESS OTHERWISE SPECIFIED, PHOENIX WORKMANSHIP STANDARDS APPLY DIMENSIONS IN INCHES OR (METRIC)</th><th>APPROVALS</th><th>DATE</th></tr> <tr><td rowspan="5">DO NOT SCALE PRINTS TOLERANCES ARE: FRACTIONS: ± 1/64 DECIMALS: .XX ± .01 .XXX ± .003 ANGLES: ± 1/2'</td><td>DRAWN</td><td></td></tr> <tr><td>CHECKED</td><td></td></tr> <tr><td>QA</td><td></td></tr> <tr><td>MFG</td><td></td></tr> <tr><td>ENGINEER</td><td></td></tr> <tr><td>APPROVED</td><td></td></tr> <tr><td></td><td>CA</td><td>10/21/2019</td></tr> <tr><td></td><td>JEM</td><td>10/21/2019</td></tr> <tr><td></td><td></td><td></td></tr> <tr><td></td><td></td><td></td></tr> <tr><td></td><td>CA</td><td>10/21/2019</td></tr> <tr><td></td><td>JEM</td><td>10/21/2019</td></tr> </table>	UNLESS OTHERWISE SPECIFIED, PHOENIX WORKMANSHIP STANDARDS APPLY DIMENSIONS IN INCHES OR (METRIC)	APPROVALS	DATE	DO NOT SCALE PRINTS TOLERANCES ARE: FRACTIONS: ± 1/64 DECIMALS: .XX ± .01 .XXX ± .003 ANGLES: ± 1/2'	DRAWN		CHECKED		QA		MFG		ENGINEER		APPROVED			CA	10/21/2019		JEM	10/21/2019								CA	10/21/2019		JEM	10/21/2019	<p>The PHOENIX Company of Chicago, Inc.</p> <p>22 GREAT HILL RD., NAUGATUCK, CT 06770 WWW.PHOENIXOFCHICAGO.COM</p> <p>PHONE: (800) 323-9562 FAX:(630) 206-1801</p> <p>TITLE HIGH POWER RECEPTACLE, CRIMP TERMINATION</p> <table border="1"> <tr><td>SIZE</td><td>FSCM</td><td>DWG NO</td><td>REV</td><td>PLATING OPT.</td></tr> <tr><td>B</td><td>58167</td><td>78-1080-0001</td><td>B</td><td>A, B, C, D</td></tr> <tr><td>SCALE</td><td>3 : 1</td><td>F.S.R. #</td><td>SHEET 1</td><td>OF 1</td></tr> </table>	SIZE	FSCM	DWG NO	REV	PLATING OPT.	B	58167	78-1080-0001	B	A, B, C, D	SCALE	3 : 1	F.S.R. #	SHEET 1	OF 1
B	PER ECN 13542	10/21/19	JEM																																																																					
A	PER ECN 4608	8/3/98	HN																																																																					
01	PROTOTYPE	7/20/98	HN																																																																					
REV	DESCRIPTION	DATE	BY																																																																					
UNLESS OTHERWISE SPECIFIED, PHOENIX WORKMANSHIP STANDARDS APPLY DIMENSIONS IN INCHES OR (METRIC)	APPROVALS	DATE																																																																						
DO NOT SCALE PRINTS TOLERANCES ARE: FRACTIONS: ± 1/64 DECIMALS: .XX ± .01 .XXX ± .003 ANGLES: ± 1/2'	DRAWN																																																																							
	CHECKED																																																																							
	QA																																																																							
	MFG																																																																							
	ENGINEER																																																																							
APPROVED																																																																								
	CA	10/21/2019																																																																						
	JEM	10/21/2019																																																																						
	CA	10/21/2019																																																																						
	JEM	10/21/2019																																																																						
SIZE	FSCM	DWG NO	REV	PLATING OPT.																																																																				
B	58167	78-1080-0001	B	A, B, C, D																																																																				
SCALE	3 : 1	F.S.R. #	SHEET 1	OF 1																																																																				