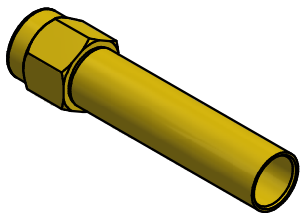


- NOTES:
- SPECIFICATIONS PER IDS-78 (PkZ® INTERFACE) AND IDS-05 (3.5mm INTERFACE).
  - ELECTRICAL RESULTS WHEN MATED TO 78 SERIES PkZ® PLUG:
    - FREQUENCY: DC TO 18 GHz.
    - VSWR: 1.30 : 1 MAX.



SCALE 2 : 1

				THE INFORMATION AND DESIGNS DISCLOSED IN THIS DOCUMENT ARE CONFIDENTIAL AND/OR PROPRIETARY TO THE PHOENIX COMPANY OF CHICAGO INC. AND MAY NOT BE USED FOR MANUFACTURING, REPRODUCED, DISCLOSED TO OTHERS OR FOR ANY OTHER PURPOSE WITHOUT THE EXPRESS WRITTEN CONSENT OF THE PHOENIX COMPANY OF CHICAGO INC.	WARNING - THIS DOCUMENT CONTAINS TECHNICAL DATA WHOSE EXPORT IS RESTRICTED BY THE ARMS EXPORT CONTROL ACT (TITLE 22, U.S.C., SEC 2751, ET. SEQ.) OR THE EXPORT ADMINISTRATION ACT OF 1979, AS AMENDED, TITLE 50, U.S.C., APP 2401 ET SEQ. VIOLATIONS OF THESE EXPORT LAWS ARE SUBJECT TO SEVERE CRIMINAL PENALTIES. DISSEMINATE IN ACCORDANCE WITH PROVISIONS OF DOD DIRECTIVE 5230.25.	Filename: \Autodesk Inventor Data Base\Assemblies\78 Series\78-1080-0670-CU-Layout for C Sized Drawing.idw		<b>The PHOENIX Company of Chicago, Inc.</b> 22 GREAT HILL RD., NAUGATUCK, CT 06770 WWW.PHOENIXOFCHICAGO.COM PHONE: (800) 323-9562 FAX:(630) 206-1801			
UNLESS OTHERWISE SPECIFIED, PHOENIX WORKMANSHIP STANDARDS APPLY DIMENSIONS IN INCHES OR (METRIC)		APPROVALS	DATE			TITLE <b>ADAPTER, PkZ® RECEPTACLE TO 3.5mm PLUG</b>					
DO NOT SCALE PRINTS		DRAWN		SIZE FSCM DWG NO <b>B 58167 7805-1000-00</b>							
TOLERANCES ARE: FRACTIONS: ± 1/64 DECIMALS: .XX ± .01 .XXX ± .003 ANGLES: ± 1/2°		CHECKED		REV PLATING OPT. <b>01 G</b>							
		QA		SCALE 5 : 1 F.S.R. # SHEET 1 OF 1							
		MFG									
		ENGINEER									
		SPS	10/19/2021								
		APPROVED									
		SJG	04/04/2023								