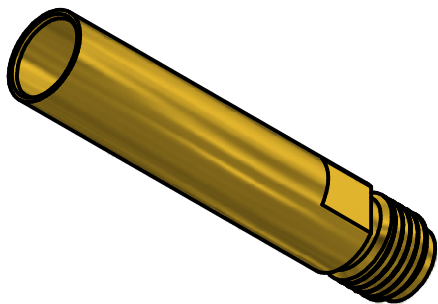


NOTES:

1. DESIGN AND INTERFACE PER IDS-78 & 05.
2. ELECTRICALS:
  - 2.1 IMPEDANCE: 50 OHMS
  - 2.2 FREQUENCY: DC TO 32 GHz.
  - 2.3 VSWR: 1.30:1 TO 26.5 GHz  
1.35:1 TO 32 GHz.
3. FOR TESTING ONLY, NOT FOR USE IN A 38999 HOUSING.



<b>MATERIAL:</b>				UNLESS OTHERWISE SPECIFIED, PALCO WORKMANSHIP STANDARDS APPLY DIMENSIONS IN INCHES OR (METRIC)  DO NOT SCALE PRINTS  TOLERANCES ARE: FRACTIONS: ± 1/64 DECIMALS: .XX ± .01 .XXX ± .005 ANGLES: ± 1/2°  THE INFORMATION IN THIS DOCUMENT IS CONFIDENTIAL AND PROPRIETARY AND MAY NOT BE USED FOR ANY PURPOSE WITHOUT THE WRITTEN CONSENT OF PALCO.	<b>APPROVALS</b> <b>DATE</b>		<b>PALCO CONNECTOR</b> 22 GREAT HILL RD., NAUGATUCK, CT 06770			
DRAWN		J. Maturo			08/01/16					
CHECKED		JEM			08/01/16		<b>SIZE</b> <b>FSCM</b> <b>DWG NO</b>		<b>REV</b> <b>PLATING OPT.</b>	
MFG		ENGINEER			JEM		08/01/16		A 58167    7805-1100-00    B    G	
APPROVED		R.M.B.		08/01/16		<b>SCALE</b>		<b>F.S.R. #</b> <b>SHEET 1 OF 1</b>		
B	PER ECN 13041	7/23/2018	JEM							
A	REL.PER ECN 12346	8/1/2016	RMB							
REV.	DESCRIPTION	DATE	APPR.							