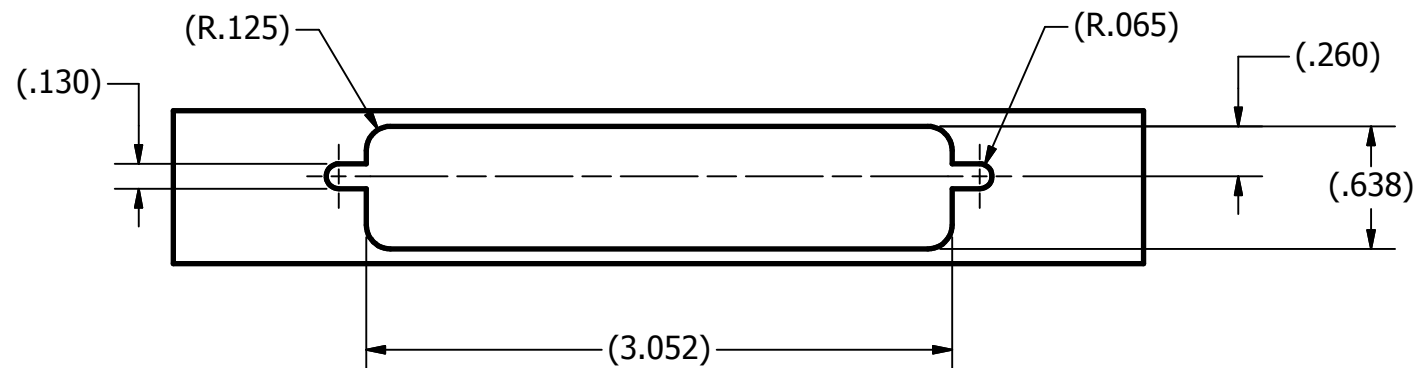


MOUNTING HARWARE SUPPLIED LOOSE.



RECOMMENDED PANEL MOUNTING CUT OUT

| REVISIONS | | | |
|-----------|-----------------------|-----------|-------------|
| REV | DESCRIPTION | DATE | APPROVED |
| A | RELEASE PER ECN#12318 | 6/6/2016 | R.M.Bradley |
| B | Per ECN #12351 | 8/23/2016 | R.M.Bradley |
| C | Per ECN #12370 | 9/28/2016 | R.M.Bradley |
| D | Per ECN #12444 | 2/6/2017 | R.M.Bradley |

SPECIFICATIONS:

- PART NUMBER: PRC16R53Q.
- MATERIALS:
HOUSING:
MACHINED: DELRIN, (ACETAL, COPOLYMER), COLOR: BLACK
MOLDED: PBT (VALOX), TYPE PT-F OR TYPE GPT-30F, COLOR: BLACK
HARDWARE (JACKSOCKETS, NUTS AND WASHERS): STAINLESS STEEL
- FINISHES HARDWARE: PASSIVATED.
- ELECTRICAL PROPERTIES:
DIELECTRIC STRENGTH: 1,000 VOLTS RMS AT SEA LEVEL;
325 VOLTS RMS AT 70,000 FEET.
INSULATION RESISTANCE: 1 MEGOHM MINIMUM..
- MECHANICAL PROPERTIES:
OPERATING TEMPERATURE: -67° F TO +257° F (-55° C TO +125° C).
- DIMENSIONS ARE FOR REFERENCE ONLY, UNLESS OTHERWISE SPECIFIED.
- ABOVE REQUIREMENTS DO NOT INCLUDE PKZ CONTACTS, PLEASE SEE INDIVIDUAL SPECIFICATION SHEETS.

| | | | | | | | |
|---|--|----------------------|--|--|--|------------------|--------------------------|
| UNLESS OTHERWISE SPECIFIED DIMENSIONS ARE IN INCHES TOLERANCES ARE: FRACTIONS DECIMALS ANGLES ±1/64 .XX ±.01 ±1/2 .XXX ±.003 | | CONTRACT NO. | | <i>The PHOENIX Company of Chicago™</i> | | | |
| THE INFORMATION DISCLOSED IN THIS DOCUMENT IS CONFIDENTIAL AND PROPRIETARY TO PHOENIX CO. INC. AND MAY NOT BE USED FOR MANUFACTURE OR ANY OTHER PURPOSE WITHOUT THE WRITTEN CONSENT OF PHOENIX CO. INC. | | APPROVALS | | | | | DATE |
| | | DRAWN R.M.Bradley | | 6/3/2016 | | | |
| | | CHECKED JEM | | 6/3/2016 | | SIZE B | FSCM NO. 60563 |
| NEXT ASSEMBLY | | USED ON | | SCALE | | SHEET 1 OF 1 | |
| APPLICATIONS | | DO NOT SCALE DRAWING | | | | | |