

# PRX PLUG HARNESS KIT

High Density Microwave  
for **PXIe**



## FEATURES

- 26-Pin PRX Plug Housing
- Pre-Terminated Size-16 PKZ RF Cables
- Cable Guide Plate
- Contact Insertion Tool
- Contact Extraction Tool
- Assembly Instructions
- Custom Lengths to an Unterminated End
- 1.37mm, RG-178, 316, 405, .047", and Custom Cable Options
- Can be Ordered as a Complete Harness

## APPLICATIONS

- PXIe Instrument Modules
- Test & Measurement
- Broadcast
- Medical
- Military

## SPECIFICATIONS

### MATERIALS AND FINISHES

#### PKZ CONTACTS

- Bodies: Brass Per ASTM B16, Gold Over Nickel
- Contacts: Beryllium Copper Per ASTM B196  
Or Brass Per ASTM B16, Gold Over Nickel
- Insulators: Virgin Teflon (PTFE) Per ASTM D1710

### ELECTRICAL

#### PKZ CONTACTS

- Impedance: 50 Ohms
- Frequency: Up to 67 GHz
- Axial Mating: .050"
- VSWR: Configuration Dependent

### ENVIRONMENTAL

#### PKZ CONTACTS

- Operating Temperature: -55°C to +165°C
- Vibration: MIL-STD-202, Method 204, Test Condition D
- Shock: MIL-STD-202, Method 213, Test Condition I
- Durability: 500 Cycles



Leading Blindmate Microwave Contact Technology

[www.phoenixofchicago.com](http://www.phoenixofchicago.com)

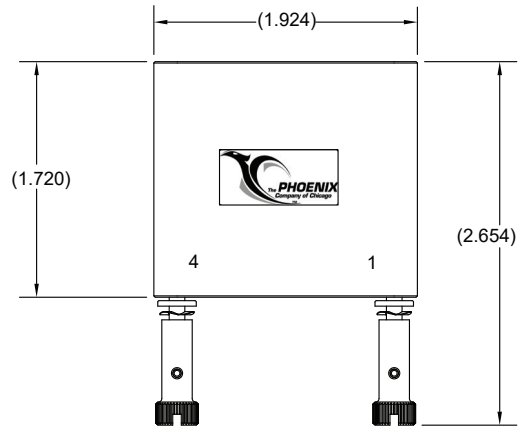
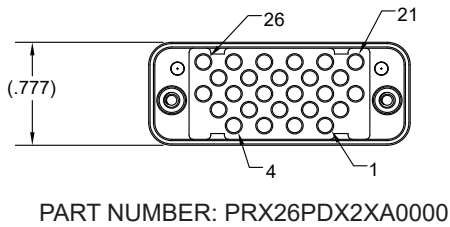
# PRX PLUG HARNESS KIT

KIT PART NUMBER: PRX26Kxxxxxxxxxx

## KIT ASSEMBLY PARTS:

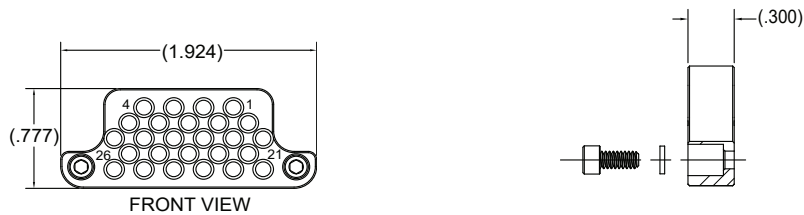
- a) PRX Plug Housing Assembly
- b) Cable Guide Plate Assembly
- c) RF Cable Assemblies (Use Kit part number PRX26Kxxxxxxxxxx to select the quantity, length and type of RF cables required.)
- d) Extraction Tool
- e) Insertion Tool
- f) Assembly Instructions

### PRX PLUG HOUSING



Plug connector housing, 26-pin with jackscrews and guidepins installed.

### PRX CABLE GUIDE PLATES



Cable Guide Plate P/N

Cable Groups

PRX1130040801  
PRX1130040802

RG-178, 316, 405  
M17/151 (.047")

The Cable Guide Plate part number provided in the kit will automatically be assigned when the cable type is selected from page 3 of PRX Plug Harness Kit drawing PRX26Kxxxxxxxxxx

# PRX PLUG HARNESS KIT

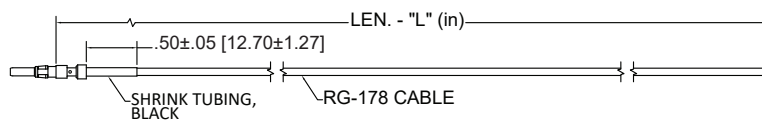
## PkZ PLUG RF CABLE FOR RG-178

**PART NUMBER: 156000023000XXX**

Impedance: 50 Ohms.

Frequency: DC TO 3 GHz.

Hi-Pot & Continuity Test 100%



Single PkZ plug RF cable with an unterminated end on RG-178 cable. The customer can specify the length through a part number menu in the drawing. Customer needs to trim and terminate the open end as described in the harness assembly instructions in PRX kit drawing PRX26Kxxxxxxxxx.

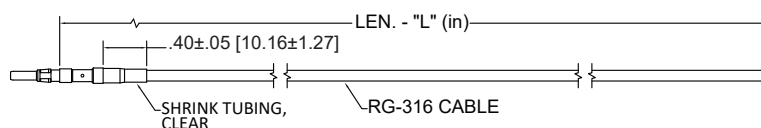
## PkZ PLUG RF CABLE FOR RG-316

**PART NUMBER: 156000007000XXX**

Impedance: 50 Ohms.

Frequency: DC TO 3 GHz.

Hi-Pot & Continuity Test 100%



Single PkZ plug RF cable with an unterminated end on RG-316 cable. The customer can specify the length through a part number menu in the drawing. Customer needs to trim and terminate the open end as described in the harness assembly instructions in PRX kit drawing PRX26Kxxxxxxxxx.

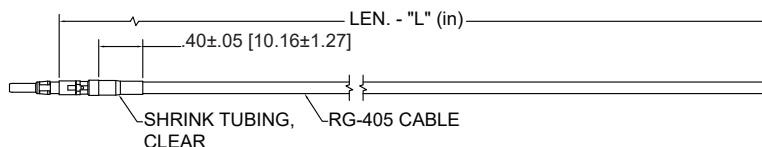
## PkZ PLUG RF CABLE FOR RG-405

**PART NUMBER: 156000064000XXX**

Impedance: 50 Ohms.

Frequency: DC TO 18 GHz.

Hi-Pot & Continuity Test 100%



Single PkZ plug RF cable with an unterminated end on RG-405 cable. The customer can specify the length through a part number menu in the drawing. Customer needs to trim and terminate the open end as described in the harness assembly instructions in PRX kit drawing PRX26Kxxxxxxxxx.

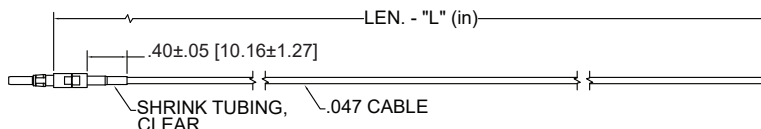
## PkZ PLUG RF CABLE FOR M17/151 (.047)

**PART NUMBER: 1560000EK000XXX**

Impedance: 50 Ohms.

Frequency: DC TO 67 GHz.

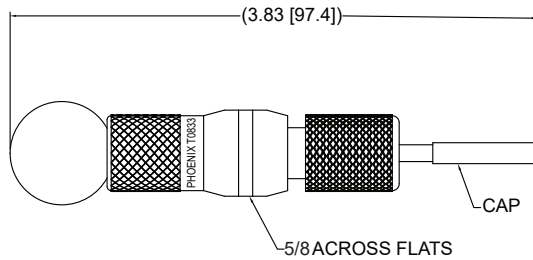
Hi-Pot & Continuity Test 100%



Single PkZ plug RF cable with an unterminated end on M17/151 (.047) cable. The customer can specify the length through a part number menu in the drawing. Customer needs to trim and terminate the open end as described in the harness assembly instructions in PRX kit drawing PRX26Kxxxxxxxxx.

# PRX PLUG HARNESS KIT

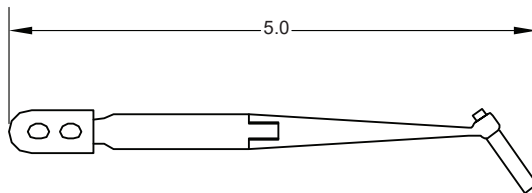
## PKZ EXTRACTION TOOL FOR PRX HOUSINGS



**PART NUMBER: T0833**

PkZ contact extraction tool for size-16 contacts for PRX housings.

## PKZ INSERTION TOOL FOR PRX HOUSINGS



**PART NUMBER: T3136**

PkZ contact insertion tool for size-16 contacts into PRX housings.

