

PRX PLUG HARNESS KIT

High Density Microwave
for **PXle**



FEATURES

- 26-Pin PRX Plug Housing
- Pre-Terminated Size-16 PKZ RF Cables
- Contact Insertion Tool
- Contact Extraction Tool
- Assembly Instructions
- Custom Lengths to an Unterminated End
- 1.37mm, RG-178, 316, 405, .047", and Custom Cable Options
- Can be Ordered as a Complete Harness

APPLICATIONS

- PXle Instrument Modules
- Test & Measurement
- Broadcast
- Medical
- Military

SPECIFICATIONS

MATERIALS AND FINISHES

PKZ CONTACTS

Bodies:	Brass Per ASTM B16, Gold Over Nickel
Contacts:	Beryllium Copper Per ASTM B196 Or Brass Per ASTM B16, Gold Over Nickel
Insulators:	Virgin Teflon (PTFE) Per ASTM D1710

ELECTRICAL

PKZ CONTACTS

Impedance:	50 Ohms
Frequency:	Up to 67 GHz
Axial Mating:	.050"
VSWR:	Configuration Dependent

ENVIRONMENTAL

PKZ CONTACTS

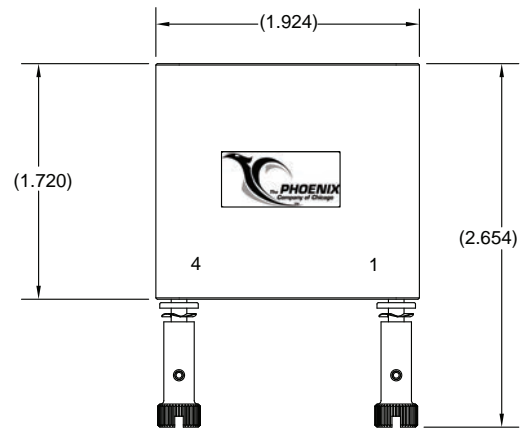
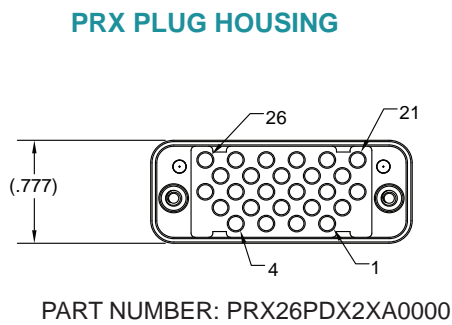
Operating Temperature:	-55°C to +165°C
Vibration:	MIL-STD-202, Method 204, Test Condition D
Shock:	MIL-STD-202, Method 213, Test Condition I
Durability:	500 Cycles

PRX PLUG HARNESS KIT

KIT PART NUMBER: PRX26Kxxxxxxxxx

KIT ASSEMBLY PARTS:

- a) PRX Plug Housing Assembly
- b) RF Cable Assemblies (Use Kit part number PRX26Kxxxxxxxxx to select the quantity, length, and type of RF cables required.)
- c) Extraction Tool
- d) Insertion Tool
- e) Assembly Instructions



Plug connector housing, 26-pin with jackscrews and guidepins installed.

PRX PLUG HARNESS KIT

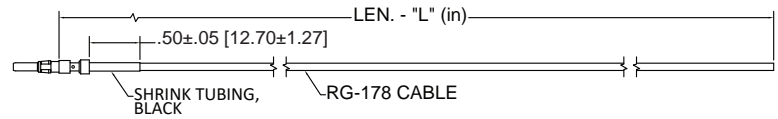
PkZ PLUG RF CABLE FOR RG-178

PART NUMBER: 156000023000XXX

Impedance: 50 Ohms.

Frequency: DC TO 3 GHz.

Hi-Pot & Continuity Test 100%



Single PkZ plug RF cable with an unterminated end on RG-178 cable. The customer can specify the length through a part number menu in the drawing. Customer needs to trim and terminate the open end as described in the harness assembly instructions in PRX kit drawing PRX26Kxxxxxxxxx.

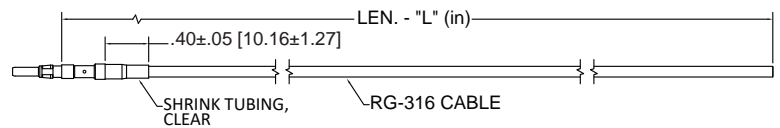
PkZ PLUG RF CABLE FOR RG-316

PART NUMBER: 156000007000XXX

Impedance: 50 Ohms.

Frequency: DC TO 3 GHz.

Hi-Pot & Continuity Test 100%



Single PkZ plug RF cable with an unterminated end on RG-316 cable. The customer can specify the length through a part number menu in the drawing. Customer needs to trim and terminate the open end as described in the harness assembly instructions in PRX kit drawing PRX26Kxxxxxxxxx.

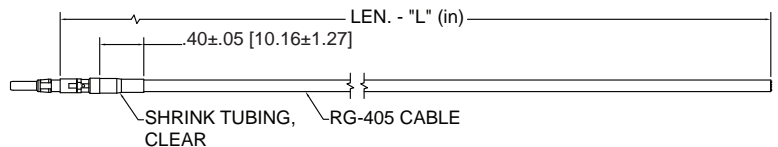
PkZ PLUG RF CABLE FOR RG-405

PART NUMBER: 156000064000XXX

Impedance: 50 Ohms.

Frequency: DC TO 50 GHz.

Hi-Pot & Continuity Test 100%



Single PkZ plug RF cable with an unterminated end on RG-405 cable. The customer can specify the length through a part number menu in the drawing. Customer needs to trim and terminate the open end as described in the harness assembly instructions in PRX kit drawing PRX26Kxxxxxxxxx.

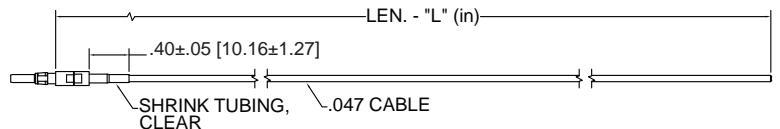
PkZ PLUG RF CABLE FOR M17/151 (.047)

PART NUMBER: 1560000EK000XXX

Impedance: 50 Ohms.

Frequency: DC TO 18 GHz.

Hi-Pot & Continuity Test 100%



Single PkZ plug RF cable with an unterminated end on M17/151 (.047) cable. The customer can specify the length through a part number menu in the drawing. Customer needs to trim and terminate the open end as described in the harness assembly instructions in PRX kit drawing PRX26Kxxxxxxxxx.

PRX PLUG HARNESS KIT

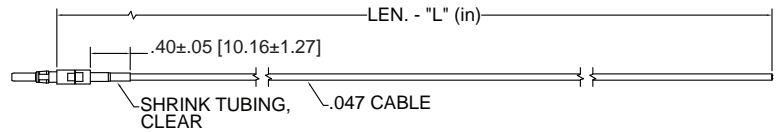
PkZ PLUG RF CABLE FOR M17/151 (.047)

PART NUMBER: 1560000EK200XXX

Impedance: 50 Ohms.

Frequency: DC TO 50 GHz.

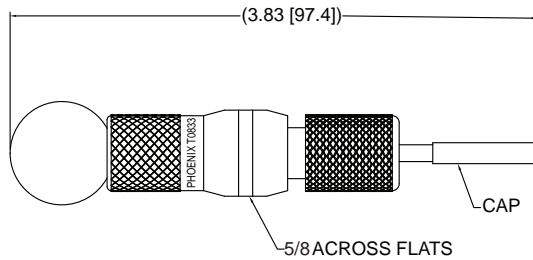
Hi-Pot & Continuity Test 100%



Single PkZ plug RF cable with an unterminated end on M17/151 (.047) cable. The customer can specify the length through a part number menu in the drawing. Customer needs to trim and terminate the open end as described in the harness assembly instructions in PRX kit drawing PRX26Kxxxxxxxxx.

PRX PLUG HARNESS KIT

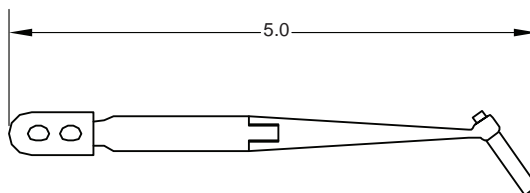
PKZ EXTRACTION TOOL FOR PRX HOUSINGS



PART NUMBER: T0833

PkZ contact extraction tool for size-16 contacts for PRX housings.

PKZ INSERTION TOOL FOR PRX HOUSINGS



PART NUMBER: T3136

PkZ contact insertion tool for size-16 contacts into PRX housings.

LEARN MORE

