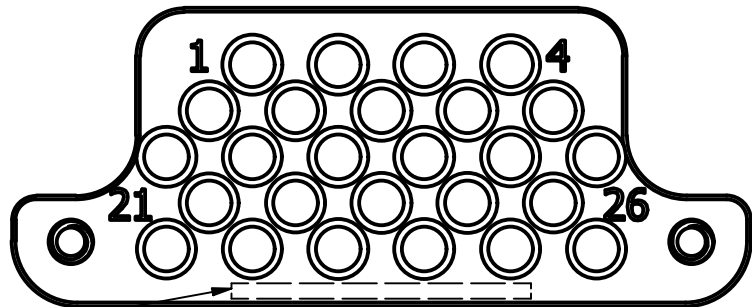


4

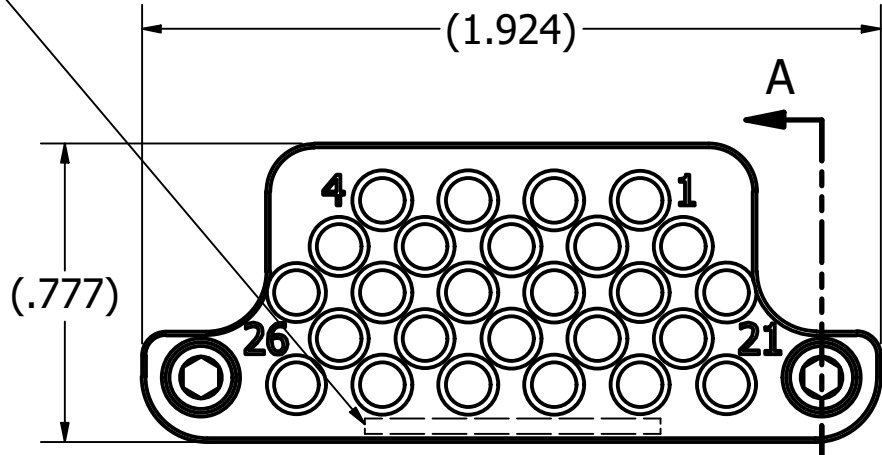
3

2

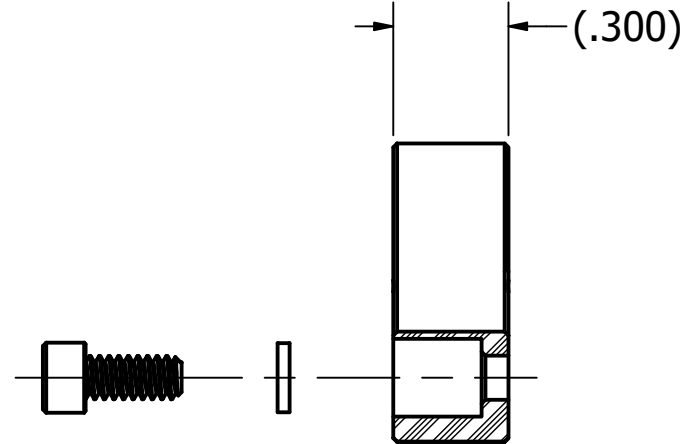
1



BACK VIEW
SCALE 2 : 1



FRONT VIEW
SCALE 2 : 1



SECTION A-A
SCALE 2 : 1

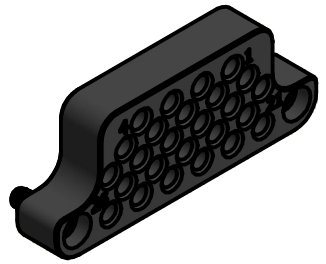
NOTE 1

SPECIFICATIONS:

1. PART NUMBER: SEE TABLE
CABLE GUIDE PLATE PART NUMBER MARKED IN LOCATION INDICATED
2. MATERIALS:
 - a) GUIDE PLATE: ACETAL, COLOR: BLACK
 - b) MOUNTING HARDWARE: STAINLESS STEEL
3. HARDWARE FINISHES: PASSIVATED
4. ENVIRONMENTAL PROPERTIES:
OPERATING TEMPERATURE: -40° F TO +194° F (-40° C TO +90° C)
5. MOUNTING HARDWARE SUPPLIED LOOSE

PRX1130040802	Ø.059	.047 CABLE	156-0302-0470
PRX1130040801	Ø.110	RG-405	156-0302-0861
PRX1130040801	Ø.110	RG-316	156-0202-0671
PRX1130040801	Ø.110	RG-178	156-0202-0402
PHOENIX P/N	MAXIMUM CABLE DIAMETER (REFERENCE)	CABLE REFERENCE	PKZ REFERENCE PLUG

TABLE



ASSEMBLED UNIT SHOWN
SCALE 1 : 1

A	ECN 14483 RELEASE	2/10/2025	DW
REV	DESCRIPTION	DATE	APPROVAL

This drawing embodies a proprietary design of The Phoenix Company of Chicago, Inc., Naugatuck, CT 06770. All design, manufacturing, reproduction, use, sale, and other rights regarding the same are expressly reserved. The information in this drawing may be covered completely or in part by patents and/or patents pending.

WARNING - THIS DOCUMENT CONTAINS TECHNICAL DATA WHOSE EXPORT IS RESTRICTED BY THE ARMS EXPORT CONTROL ACT (TITLE 22, U.S.C., SEC 2751, ET. SEQ.) OR THE EXPORT ADMINISTRATION ACT OF 1979, AS AMENDED, TITLE 50, U.S.C., APP 2401 ET SEQ. VIOLATIONS OF THESE EXPORT LAWS ARE SUBJECT TO SEVERE CRIMINAL PENALTIES. DISSEMINATE IN ACCORDANCE WITH PROVISIONS OF DOD DIRECTIVE 5230.25.

UNLESS OTHERWISE SPECIFIED, PHOENIX WORKMANSHIP STANDARDS APPLY DIMENSIONS IN INCHES OR [METRIC]
DO NOT SCALE PRINTS
TOLERANCES ARE:
FRACTIONS: ± 1/64
DECIMALS: .XX ± .01
.XXX ± .003
ANGLES: ± 1/2°

APPROVALS	DATE
DRAWN KKC	12/9/2024
CHECKED AH	2/6/2025
QA	
MFG	
ENGINEER SJG	2/6/2025
APPROVED DW	2/7/2025

The PHOENIX Company of Chicago, Inc.
22 GREAT HILL RD., NAUGATUCK, CT 06770
WWW.PHOENIXOFCHICAGO.COM
PHONE: (800) 323-9562 FAX:(630) 206-1801

TITLE
PRX PLUG, 26 POSITION CABLE GUIDE PLATE KIT

SIZE B	FSCM 58167	DWG NO PRX11300408XX	REV A	PLATING OPT.
SCALE 2 : 1	F.S.R. #	SHEET 1	OF 1	

4

3

2

1