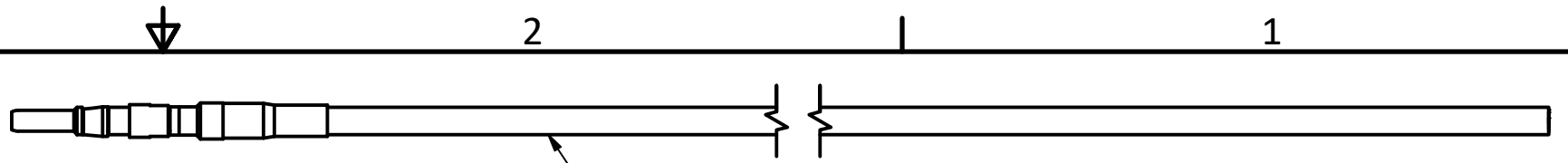


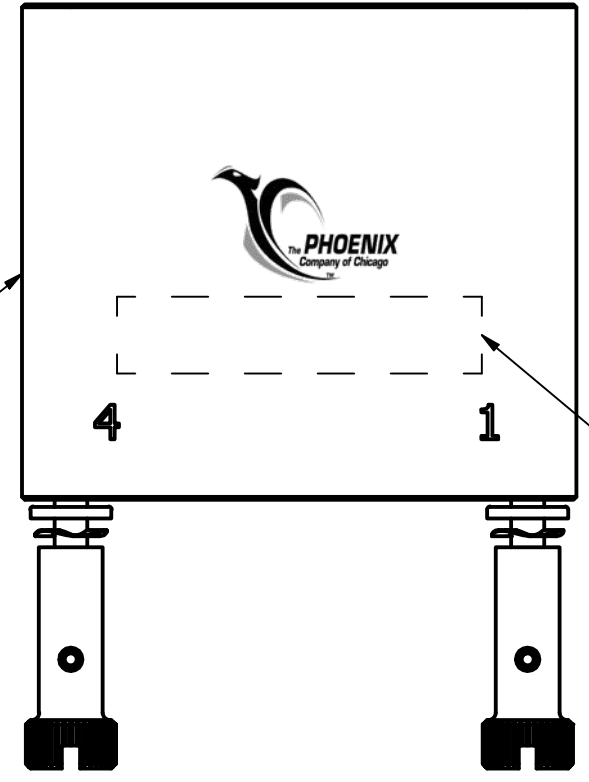
SPECIFICATIONS:

1. PART NUMBER (REFER TO CONFIGURATOR ON SHEET 3) AND DATE CODE
2. MATERIALS:
 - a) PLUG HOUSING/CABLE GUIDE PLATE: ACETAL, COLOR: BLACK
 - b) HARDWARE: STAINLESS STEEL
 - c) PkZ® CONNECTOR:
 - BODY: BRASS
 - CONTACT: BERYLLIUM COPPER
 - INSULATOR: TEFLON
 - d) T0833: STAINLESS STEEL
 - e) T3136: STAINLESS STEEL
3. FINISHES:
 - a) HARDWARE: PASSIVATED
 - b) PkZ BODY/CONTACTS: GOLD
4. ELECTRICAL PROPERTIES (APPLIES TO HOUSING ONLY):
 - a) DIELECTRIC STRENGTH: 1,000 VOLTS RMS AT SEA LEVEL;
325 VOLTS RMS AT 70,000 FEET
 - b) INSULATION RESISTANCE: 1 MEGOHM MINIMUM
5. ENVIRONMENTAL PROPERTIES:
 - OPERATING TEMPERATURE: -40° F TO +194° F (-40° C TO +90° C)
6. RF CABLE ASSEMBLY SPECIFICATIONS: REFER TO RF CABLE ASSEMBLY DRAWING (AVAILABLE UPON REQUEST)
7. KIT ASSEMBLY PARTS:
 - a) PRX PLUG HOUSING ASSEMBLY
 - b) CABLE GUIDE PLATE ASSEMBLY
 - c) RF CABLE ASSEMBLIES
 - d) INSERTION TOOL
 - e) EXTRACTION TOOL



CABLE ASSEMBLY
SEE NOTE 6

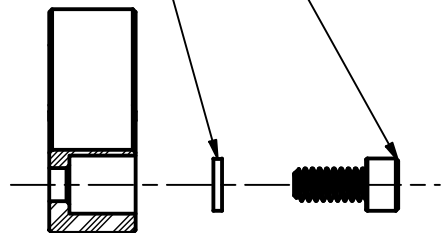
PRX PLUG HOUSING
ASSEMBLY



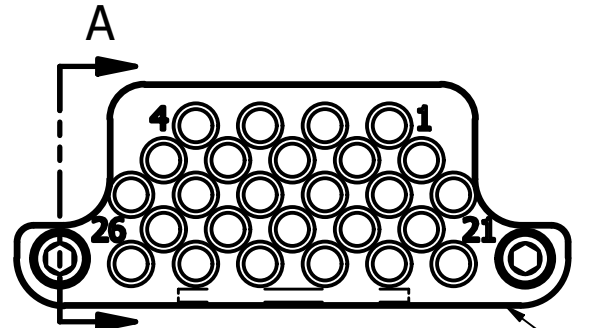
SEE NOTE 1

#4 SOCKET HEAD
SCREW (2X)

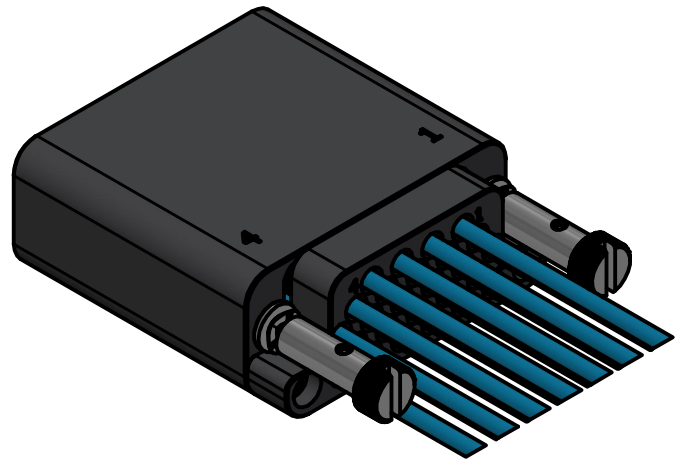
#4 FLAT
WASHER (2X)



SECTION A-A
SCALE 1.5 : 1



CABLE GUIDE PLATE
ASSEMBLY



ASSEMBLED UNIT SHOWN

A	ECN 14483 RELEASE	2/10/2025	DW
REV	DESCRIPTION	DATE	APPROVAL

This drawing embodies a proprietary design of The Phoenix Company of Chicago, Inc., Naugatuck, CT 06770. All design, manufacturing, reproduction, use, sale, and other rights regarding the same are expressly reserved. The information in this drawing may be covered completely or in part by patents and/or patents pending.

WARNING - THIS DOCUMENT CONTAINS TECHNICAL DATA WHOSE EXPORT IS RESTRICTED BY THE ARMS EXPORT CONTROL ACT (TITLE 22, U.S.C., SEC 2751, ET. SEQ.) OR THE EXPORT ADMINISTRATION ACT OF 1979, AS AMENDED, TITLE 50, U.S.C., APP 2401 ET SEQ. VIOLATIONS OF THESE EXPORT LAWS ARE SUBJECT TO SEVERE CRIMINAL PENALTIES. DISSEMINATE IN ACCORDANCE WITH PROVISIONS OF DOD DIRECTIVE 5230.25.

UNLESS OTHERWISE SPECIFIED, PHOENIX WORKMANSHIP STANDARDS APPLY DIMENSIONS IN INCHES OR [METRIC] DO NOT SCALE PRINTS TOLERANCES ARE: FRACTIONS: ± 1/64 DECIMALS: .XX ± .01 .XXX ± .003 ANGLES: ± 1/2°	APPROVALS	DATE
	DRAWN KKC	11/24/2024
	CHECKED AH	2/6/2025
	QA	
	MFG	
ENGINEER SJG	2/6/2025	
APPROVED DW	2/7/2025	

The PHOENIX Company of Chicago, Inc.
22 GREAT HILL RD., NAUGATUCK, CT 06770
WWW.PHOENIXOFCHICAGO.COM
PHONE: (800) 323-9562 FAX:(630) 206-1801

TITLE
PRX PLUG HARNESS KIT

SIZE B	FSCM 58167	DWG NO PRX26Kxxxxxxxxxx	REV A	PLATING OPT.
SCALE 1 : 1	F.S.R. #	SHEET 1 OF 4		

4

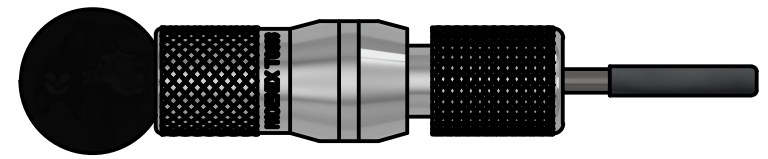
3

2

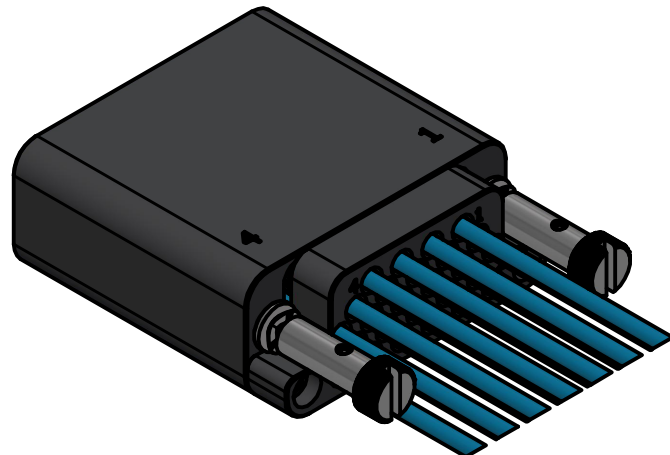
1



T3136 - ANGLED INSERTION TOOL
SIZE 16 CONTACTS



T0833 - REMOVAL TOOL
SIZE 16 CONTACTS



ASSEMBLED UNIT SHOWN

T3136	T0833
ANGLED INSERTION	REMOVAL
TOOL TABLE	

<p>This drawing embodies a proprietary design of The Phoenix Company of Chicago, Inc., Naugatuck, CT 06770. All design, manufacturing, reproduction, use, sale, and other rights regarding the same are expressly reserved. The information in this drawing may be covered completely or in part by patents and/or patents pending.</p>	<p>WARNING - THIS DOCUMENT CONTAINS TECHNICAL DATA WHOSE EXPORT IS RESTRICTED BY THE ARMS EXPORT CONTROL ACT (TITLE 22, U.S.C., SEC 2751, ET. SEQ.) OR THE EXPORT ADMINISTRATION ACT OF 1979, AS AMENDED, TITLE 50, U.S.C., APP 2401 ET SEQ. VIOLATIONS OF THESE EXPORT LAWS ARE SUBJECT TO SEVERE CRIMINAL PENALTIES. DISSEMINATE IN ACCORDANCE WITH PROVISIONS OF DOD DIRECTIVE 5230.25.</p>	UNLESS OTHERWISE SPECIFIED, PHOENIX WORKMANSHIP STANDARDS APPLY DIMENSIONS IN INCHES OR [METRIC]	
		APPROVALS	DATE
		DRAWN KJC	11/24/2024
		CHECKED AH	2/6/2025
DO NOT SCALE PRINTS		QA	
TOLERANCES ARE: FRACTIONS: ± 1/64 DECIMALS: .XX ± .01 .XXX ± .003 ANGLES: ± 1/2°		MFG	
		ENGINEER SJG	2/6/2025
		APPROVED DW	2/7/2025

The PHOENIX Company of Chicago, Inc.
22 GREAT HILL RD., NAUGATUCK, CT 06770
WWW.PHOENIXOFCHICAGO.COM
PHONE: (800) 323-9562 FAX: (630) 206-1801

TITLE
PRX PLUG HARNESS KIT

SIZE B	FSCM 58167	DWG NO PRX26Kxxxxxxxxxx	REV A	PLATING OPT.
SCALE 1 : 1		F.S.R. #	SHEET 2 OF 4	

4

3

2

1

4

3

2

1

PRX HARNESS ASSEMBLY KIT CONFIGURATOR

PRX 26 K X XX XX XXXX

SERIES DESIGNATION _____
PkZ HIGH DENSITY PLUG HARNESS

NUMBER OF POSITIONS _____
26 = 26 POSITIONS

HOUSING TYPE _____
K = PLUG KIT

CORE SIZE _____
C = **12 CORE
D = 16 CORE

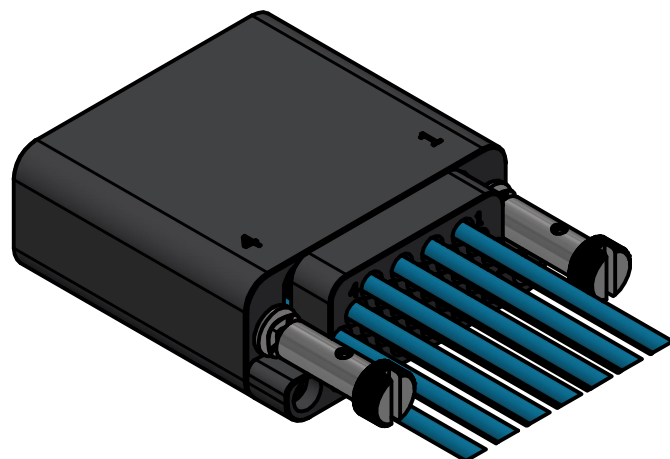
****Core sizes above 16 will result in a design with less than 26 positions.
Consult factory for details.**

CABLE TYPE _____
64 = Times #AA-7741 (T-Flex 405HF)
23 = RG-178B/U (M17/93-RG178)
07 = RG-316/U (M17/113-RG316)F
BB = M17/151 (Belden 1674A) .047 Conf.
FN = 1.32mm 75 Ohm U.FL cable, Black
DY = 1.37mm, Black Coaxial Cable

<u>NUMBER OF PkZ CABLE ASSEMBLIES (PkZ CONNECTOR TO BLUNT CUT END)</u>				
01 = 1	07 = 7	13 = 13	19 = 19	25 = 25
02 = 2	08 = 8	14 = 14	20 = 20	26 = 26
03 = 3	09 = 9	15 = 15	21 = 21	
04 = 4	10 = 10	16 = 16	22 = 22	
05 = 5	11 = 11	17 = 17	23 = 23	
06 = 6	12 = 12	18 = 18	24 = 24	

<u>PKZ CABLE ASSEMBLY LENGTH (SHOWN FOR EXAMPLE)</u>		<u>INCH DESIGNATIONS IN 1/2" INCREMENTS</u>		<u>FOOT DESIGNATIONS *USE ONLY IF CABLE IS 8.3' OR LARGER*</u>	
		060A = 6.0"	085A = 8.5"	083F = 8.3'	105F = 10.5'
		065A = 6.5"	090A = 9.0"	090F = 9.0'	110F = 11.0'
		070A = 7.0"	100A = 10.0"	095F = 9.5'	115F = 11.5'
		075A = 7.5"	105A = 10.5"	100F = 10.0'	120F = 12.0'

Note: For special configurations not available from the options listed above replace the last 4 characters with a sequential series of digits.



ASSEMBLED UNIT SHOWN

This drawing embodies a proprietary design of The Phoenix Company of Chicago, Inc., Naugatuck, CT 06770. All design, manufacturing, reproduction, use, sale, and other rights regarding the same are expressly reserved. The information in this drawing may be covered completely or in part by patents and/or patents pending.

WARNING - THIS DOCUMENT CONTAINS TECHNICAL DATA WHOSE EXPORT IS RESTRICTED BY THE ARMS EXPORT CONTROL ACT (TITLE 22, U.S.C., SEC 2751, ET. SEQ.) OR THE EXPORT ADMINISTRATION ACT OF 1979, AS AMENDED, TITLE 50, U.S.C., APP 2401 ET SEQ. VIOLATIONS OF THESE EXPORT LAWS ARE SUBJECT TO SEVERE CRIMINAL PENALTIES. DISSEMINATE IN ACCORDANCE WITH PROVISIONS OF DOD DIRECTIVE 5230.25.

UNLESS OTHERWISE SPECIFIED, PHOENIX WORKMANSHIP STANDARDS APPLY DIMENSIONS IN INCHES OR [METRIC]

DO NOT SCALE PRINTS

TOLERANCES ARE:
FRACTIONS: ± 1/64
DECIMALS: .XX ± .01
.XXX ± .003
ANGLES: ± 1/2°

32

APPROVALS	DATE
DRAWN KKC	11/26/2024
CHECKED AH	2/6/2025
QA	
MFG	
ENGINEER	
APPROVED	

The PHOENIX Company of Chicago, Inc.

22 GREAT HILL RD., NAUGATUCK, CT 06770
WWW.PHOENIXOFCHICAGO.COM
PHONE: (800) 323-9562 FAX:(630) 206-1801

TITLE
PRX PLUG HARNESS KIT

SIZE B	FSCM 58167	DWG NO PRX26Kxxxxxxxxxx	REV A	PLATING OPT.
SCALE 1 : 1		F.S.R. #	SHEET 3 OF 4	

4

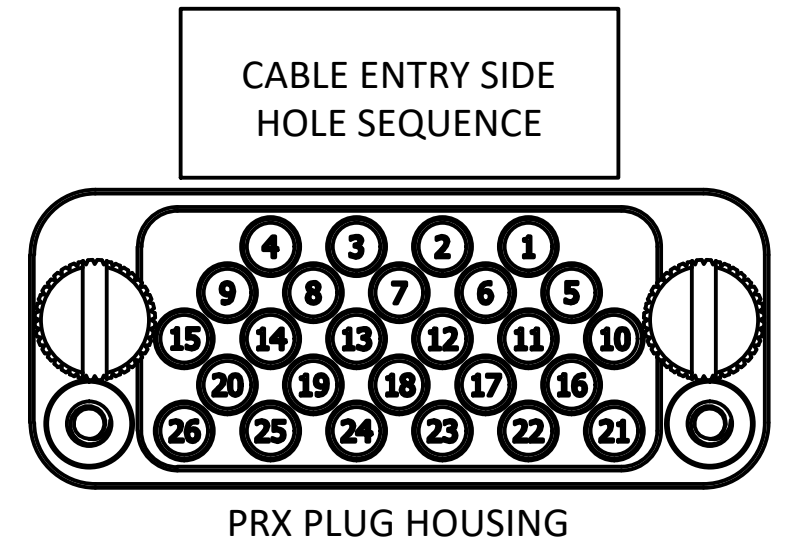
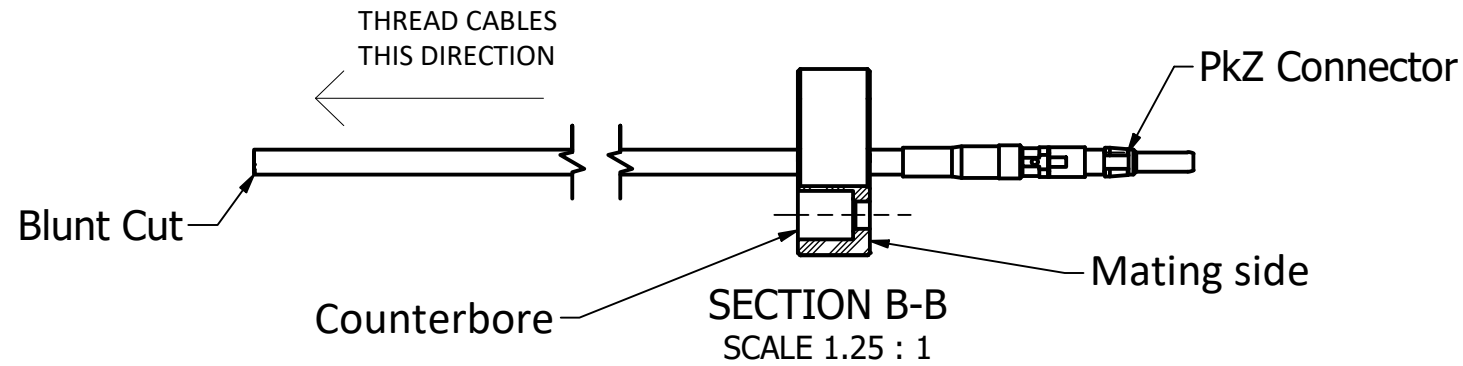
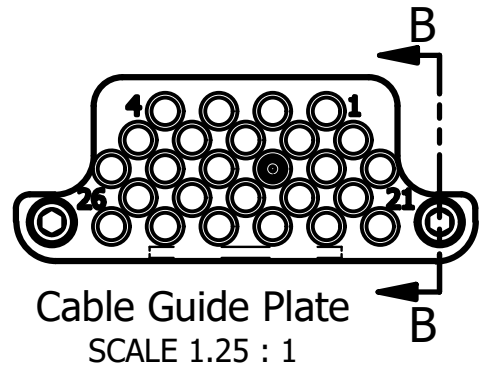
3

2

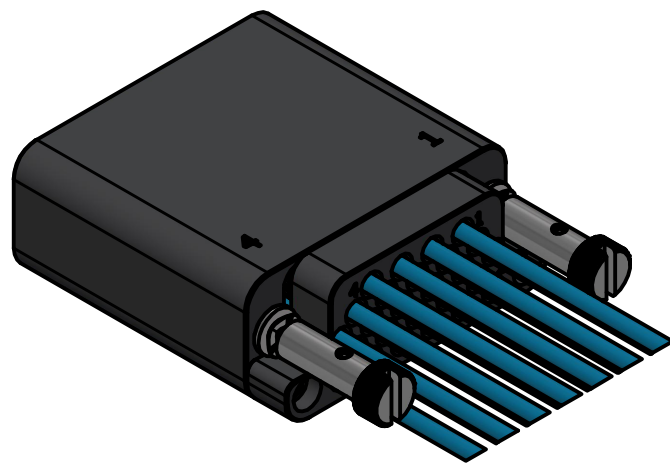
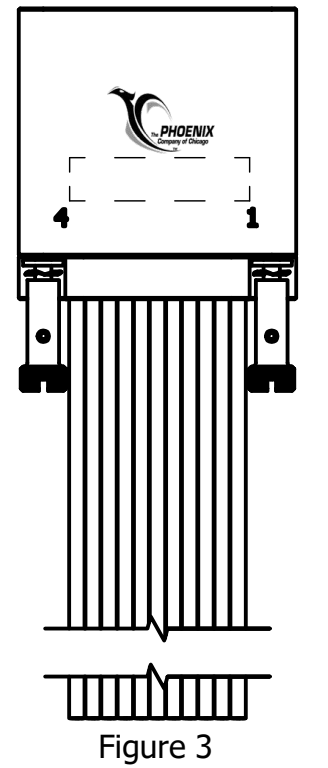
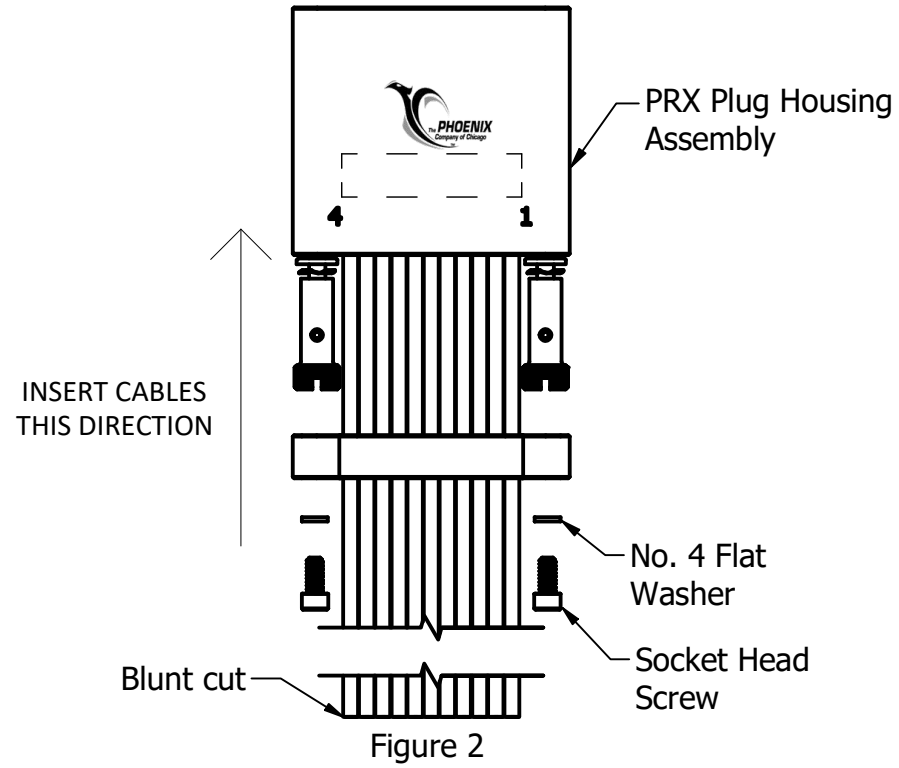
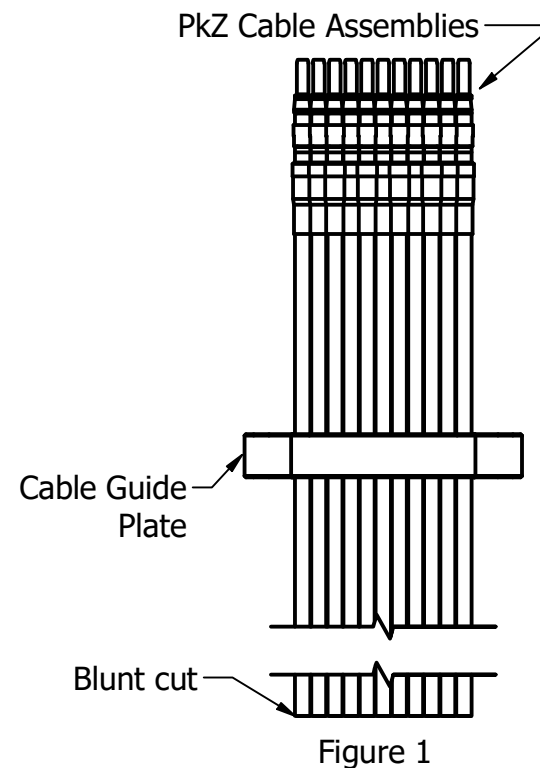
1

HARNESS ASSEMBLY INSTRUCTIONS

1. Install Cable Assemblies into the Cable Guide Plate from the mating side. Thread the blunt end of each Cable Assembly thru the assigned Cable Guide Plate hole position. (Figure 1 & SECTION B-B)



2. With the PRX Plug Housing Assembly Cable Entry Side facing you, install the PkZ end of the Cable Assembly into the corresponding hole position of the housing using angled insertion tool T3136, PkZ contacts must snap into place.
 - a) Repeat 25 times working from positions 1 through 26.
 - b) Cable Assemblies cannot criss-cross between PRX Plug Housing Assembly and Cable Guide Plate.
3. Slide Cable Guide Plate into position. Fasten the Cable Guide Plate to the PRX Plug Housing Assembly using the two Socket Head Screws & two No. 4 Flat Washers. (Figure 2)



This drawing embodies a proprietary design of The Phoenix Company of Chicago, Inc., Naugatuck, CT 06770. All design, manufacturing, reproduction, use, sale, and other rights regarding the same are expressly reserved. The information in this drawing may be covered completely or in part by patents and/or patents pending.

WARNING - THIS DOCUMENT CONTAINS TECHNICAL DATA WHOSE EXPORT IS RESTRICTED BY THE ARMS EXPORT CONTROL ACT (TITLE 22, U.S.C., SEC 2751, ET. SEQ.) OR THE EXPORT ADMINISTRATION ACT OF 1979, AS AMENDED, TITLE 50, U.S.C., APP 2401 ET SEQ. VIOLATIONS OF THESE EXPORT LAWS ARE SUBJECT TO SEVERE CRIMINAL PENALTIES. DISSEMINATE IN ACCORDANCE WITH PROVISIONS OF DOD DIRECTIVE 5230.25.

UNLESS OTHERWISE SPECIFIED, PHOENIX WORKMANSHIP STANDARDS APPLY DIMENSIONS IN INCHES OR [METRIC]
DO NOT SCALE PRINTS
TOLERANCES ARE:
FRACTIONS: ± 1/64
DECIMALS: .XX ± .01
.XXX ± .003
ANGLES: ± 1/2°

APPROVALS	DATE
DRAWN KKC	11/26/2024
CHECKED AH	2/6/2025
QA	
MFG	
ENGINEER	
APPROVED	

The PHOENIX Company of Chicago, Inc.
22 GREAT HILL RD., NAUGATUCK, CT 06770
WWW.PHOENIXOFCHICAGO.COM
PHONE: (800) 323-9562 FAX:(630) 206-1801

TITLE PRX PLUG HARNESS KIT				
SIZE B	FSCM 58167	DWG NO PRX26Kxxxxxxxxxx	REV A	PLATING OPT.
SCALE 1 : 1		F.S.R. #	SHEET 4 OF 4	