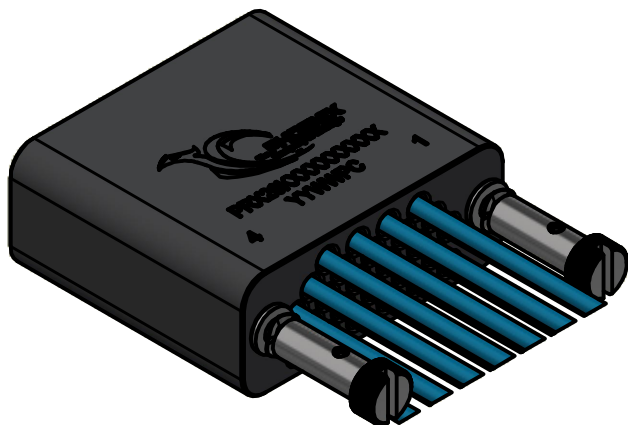
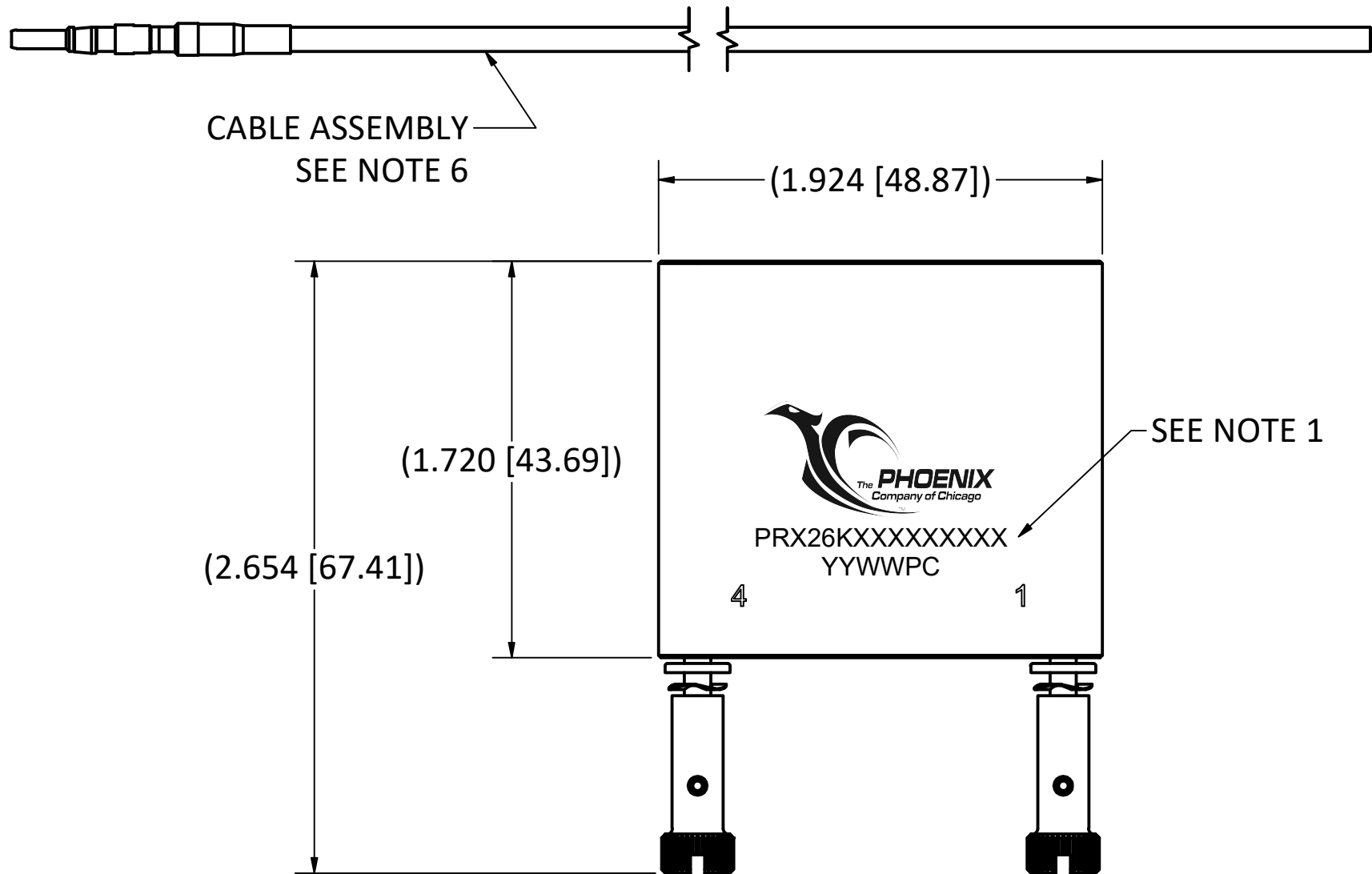


SPECIFICATIONS:

1. PART NUMBER (REFER TO CONFIGURATOR ON SHEET 3) AND DATE CODE FORMAT YYWWPC WITH PHOENIX DESIGNATOR.
2. MATERIALS:
- a) PLUG HOUSING: ACETAL, COLOR: BLACK
  - b) HARDWARE: STAINLESS STEEL
  - c) PkZ® CONNECTOR:
    - BODY: BRASS
    - CONTACT: BERYLLIUM COPPER
    - INSULATOR: TEFLON
  - d) T0833: STAINLESS STEEL
  - e) T3136: STAINLESS STEEL
3. FINISHES:
- a) HARDWARE: PASSIVATED
  - b) PkZ BODY/CONTACTS: GOLD
4. ELECTRICAL PROPERTIES (APPLIES TO HOUSING ONLY):
- a) DIELECTRIC STRENGTH: 1,000 VOLTS RMS AT SEA LEVEL; 325 VOLTS RMS AT 70,000 FEET
  - b) INSULATION RESISTANCE: 1 MEGOHM MINIMUM
5. ENVIRONMENTAL PROPERTIES:
- OPERATING TEMPERATURE: -40° F TO +194° F ( -40° C TO +90° C )
6. RF CABLE ASSEMBLY SPECIFICATIONS: REFER TO RF CABLE ASSEMBLY DRAWING (AVAILABLE UPON REQUEST)
7. KIT ASSEMBLY PARTS:
- a) PRX PLUG HOUSING ASSEMBLY
  - b) RF CABLE ASSEMBLIES
  - c) INSERTION TOOL
  - d) EXTRACTION TOOL



ASSEMBLED UNIT SHOWN  
SCALE 1 : 1

C	ECN 14575	1/15/2026	DRW
B	ECN 14511	4/17/2025	KKC
A	ECN 14483 RELEASE	2/10/2025	DW
REV	DESCRIPTION	DATE	APPROVAL

This drawing embodies a proprietary design of The Phoenix Company of Chicago, Inc., Naugatuck, CT 06770. All design, manufacturing, reproduction, use, sale, and other rights regarding the same are expressly reserved. The information in this drawing may be covered completely or in part by patents and/or patents pending.

WARNING - THIS DOCUMENT CONTAINS TECHNICAL DATA WHOSE EXPORT IS RESTRICTED BY THE ARMS EXPORT CONTROL ACT (TITLE 22, U.S.C., SEC 2751, ET. SEQ.) OR THE EXPORT ADMINISTRATION ACT OF 1979, AS AMENDED, TITLE 50, U.S.C., APP 2401 ET SEQ. VIOLATIONS OF THESE EXPORT LAWS ARE SUBJECT TO SEVERE CRIMINAL PENALTIES. DISSEMINATE IN ACCORDANCE WITH PROVISIONS OF DOD DIRECTIVE 5230.25.

UNLESS OTHERWISE SPECIFIED, PHOENIX WORKMANSHIP STANDARDS APPLY DIMENSIONS IN INCHES OR [METRIC]

DO NOT SCALE PRINTS  
TOLERANCES ARE:  
FRACTIONS:  $\pm 1/64$   
DECIMALS: .XX  $\pm .01$   
.XXX  $\pm .003$   
ANGLES:  $\pm 1/2^\circ$

$\sqrt{32}$

APPROVALS	DATE
DRAWN KKC	11/24/2024
CHECKED AH	2/6/2025
QA	
MFG	
ENGINEER SJG	2/6/2025
APPROVED DW	2/7/2025

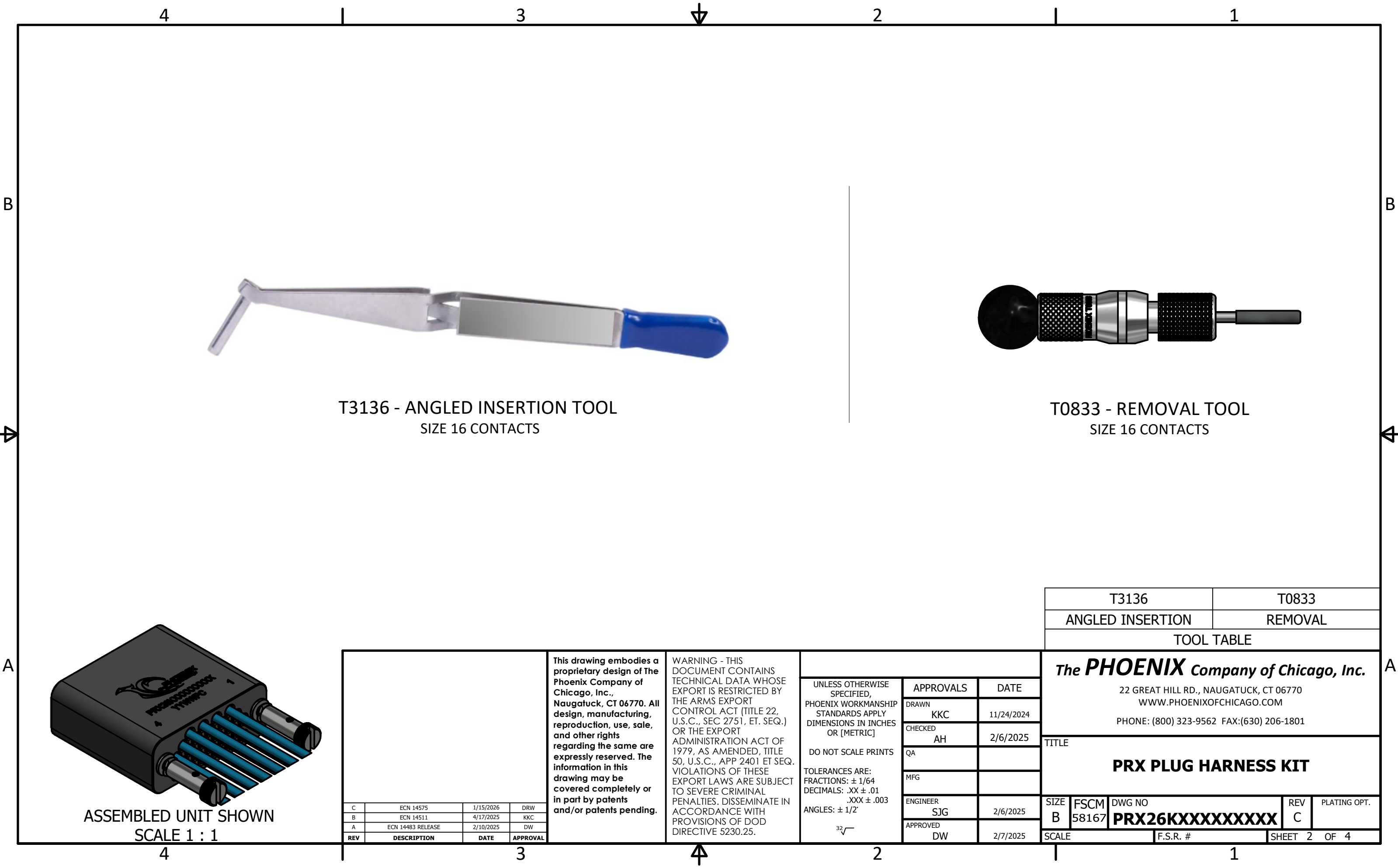
The **PHOENIX** Company of Chicago, Inc.

22 GREAT HILL RD., NAUGATUCK, CT 06770  
WWW.PHOENIXOFCHICAGO.COM  
PHONE: (800) 323-9562 FAX:(630) 206-1801

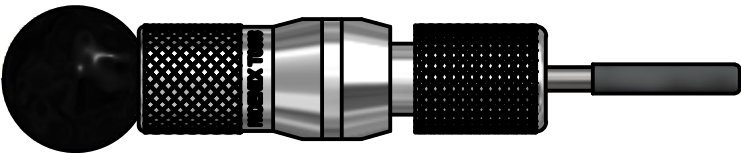
TITLE

**PRX PLUG HARNESS KIT**

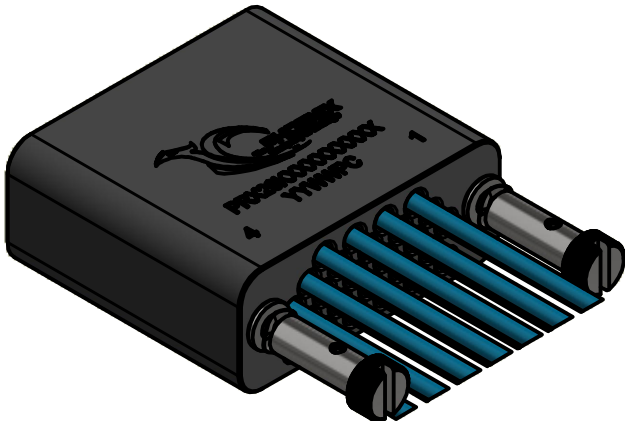
SIZE	FSCM	DWG NO	REV	PLATING OPT.
B	58167	<b>PRX26KXXXXXXXXXX</b>	C	
SCALE	F.S.R. #		SHEET 1	OF 4



T3136 - ANGLED INSERTION TOOL  
SIZE 16 CONTACTS



T0833 - REMOVAL TOOL  
SIZE 16 CONTACTS



ASSEMBLED UNIT SHOWN  
SCALE 1 : 1

<div>This drawing embodies a proprietary design of The Phoenix Company of Chicago, Inc., Naugatuck, CT 06770. All design, manufacturing, reproduction, use, sale, and other rights regarding the same are expressly reserved. The information in this drawing may be covered completely or in part by patents and/or patents pending.</div> <div>WARNING - THIS DOCUMENT CONTAINS TECHNICAL DATA WHOSE EXPORT IS RESTRICTED BY THE ARMS EXPORT CONTROL ACT (TITLE 22, U.S.C., SEC 2751, ET. SEQ.) OR THE EXPORT ADMINISTRATION ACT OF 1979, AS AMENDED, TITLE 50, U.S.C., APP 2401 ET SEQ. VIOLATIONS OF THESE EXPORT LAWS ARE SUBJECT TO SEVERE CRIMINAL PENALTIES. DISSEMINATE IN ACCORDANCE WITH PROVISIONS OF DOD DIRECTIVE 5230.25.</div>				<div>UNLESS OTHERWISE SPECIFIED, PHOENIX WORKMANSHIP STANDARDS APPLY DIMENSIONS IN INCHES OR [METRIC]</div> <div>DO NOT SCALE PRINTS</div> <div>TOLERANCES ARE: FRACTIONS: ± 1/64 DECIMALS: .XX ± .01 .XXX ± .003 ANGLES: ± 1/2°</div> <div>32√</div>		<div>APPROVALS</div> <div>DATE</div> <div>DRAWN KKC 11/24/2024</div> <div>CHECKED AH 2/6/2025</div> <div>QA</div> <div>MFG</div> <div>ENGINEER SJG 2/6/2025</div> <div>APPROVED DW 2/7/2025</div>		<div>The <b>PHOENIX</b> Company of Chicago, Inc.</div> <div>22 GREAT HILL RD., NAUGATUCK, CT 06770 WWW.PHOENIXOFCHICAGO.COM PHONE: (800) 323-9562 FAX:(630) 206-1801</div>											
								<div>TITLE</div> <div>PRX PLUG HARNESS KIT</div>											
														SIZE B	FSCM 58167	DWG NO PRX26KXXXXXXXXXX		REV C	PLATING OPT.
														SCALE		F.S.R. #		SHEET 2 OF 4	
C	ECN 14575	1/15/2026	DRW																
B	ECN 14511	4/17/2025	KKC																
A	ECN 14483 RELEASE	2/10/2025	DW																
REV	DESCRIPTION	DATE	APPROVAL																

4

3

2

1

PRX HARNESS ASSEMBLY KIT CONFIGURATOR

PRX

26

K

X

XX

XX

XXXX

SERIES DESIGNATION

PkZ HIGH DENSITY PLUG HARNESS

NUMBER OF POSITIONS

26 = 26 POSITIONS

HOUSING TYPE

K = PLUG KIT

CORE SIZE

C = \*\*12 CORE

D = 16 CORE

\*\*Core sizes above 16 will result in a design with less than 26 positions.

Consult factory for details.

CABLE TYPE

64 = Times #AA-7741 (T-Flex 405HF)

23 = RG-178B/U (M17/93-RG178)

07 = RG-316/U (M17/113-RG316)F

BB = M17/151 (Belden 1674A) .047 Conf.

DY = 1.37mm, Black Coaxial Cable

EK = .047 Flex Cable

NUMBER OF PkZ CABLE ASSEMBLIES (PkZ CONNECTOR TO BLUNT CUT END)

01 = 1

02 = 2

03 = 3

04 = 4

05 = 5

06 = 6

07 = 7

08 = 8

09 = 9

10 = 10

11 = 11

12 = 12

13 = 13

14 = 14

15 = 15

16 = 16

17 = 17

18 = 18

19 = 19

20 = 20

21 = 21

22 = 22

23 = 23

24 = 24

25 = 25

26 = 26

PkZ CABLE ASSEMBLY LENGTH (SHOWN FOR EXAMPLE)

INCH DESIGNATIONS

IN 1/2" INCREMENTS

060A = 6.0"

065A = 6.5"

070A = 7.0"

075A = 7.5"

085A = 8.5"

090A = 9.0"

100A = 10.0"

105A = 10.5"

FOOT DESIGNATIONS

\*USE ONLY IF CABLE IS 8.3' OR LARGER\*

083F = 8.3'

090F = 9.0'

095F = 9.5'

100F = 10.0'

105F = 10.5'

110F = 11.0'

115F = 11.5'

120F = 12.0'

Note: For special configurations not available from the options listed above replace the last 4 characters with a sequential series of digits.

ASSEMBLED UNIT SHOWN

SCALE 1 : 1

This drawing embodies a proprietary design of The Phoenix Company of Chicago, Inc., Naugatuck, CT 06770. All design, manufacturing, reproduction, use, sale, and other rights regarding the same are expressly reserved. The information in this drawing may be covered completely or in part by patents and/or patents pending.

WARNING - THIS DOCUMENT CONTAINS TECHNICAL DATA WHOSE EXPORT IS RESTRICTED BY THE ARMS EXPORT CONTROL ACT (TITLE 22, U.S.C., SEC 2751, ET. SEQ.) OR THE EXPORT ADMINISTRATION ACT OF 1979, AS AMENDED, TITLE 50, U.S.C., APP 2401 ET SEQ. VIOLATIONS OF THESE EXPORT LAWS ARE SUBJECT TO SEVERE CRIMINAL PENALTIES. DISSEMINATE IN ACCORDANCE WITH PROVISIONS OF DOD DIRECTIVE 5230.25.

UNLESS OTHERWISE SPECIFIED, PHOENIX WORKMANSHIP STANDARDS APPLY DIMENSIONS IN INCHES OR [METRIC]

DO NOT SCALE PRINTS

TOLERANCES ARE:  
FRACTIONS: ± 1/64  
DECIMALS: .XX ± .01  
.XXX ± .003  
ANGLES: ± 1/2°

The PHOENIX Company of Chicago, Inc.

22 GREAT HILL RD., NAUGATUCK, CT 06770

WWW.PHOENIXOFCHICAGO.COM

PHONE: (800) 323-9562 FAX:(630) 206-1801

TITLE

PRX PLUG HARNESS KIT

SIZE

B

FSCM

58167

DWG NO

PRX26KXXXXXXXXXX

REV

C

PLATING OPT.

SCALE

F.S.R. #

SHEET 3 OF 4

