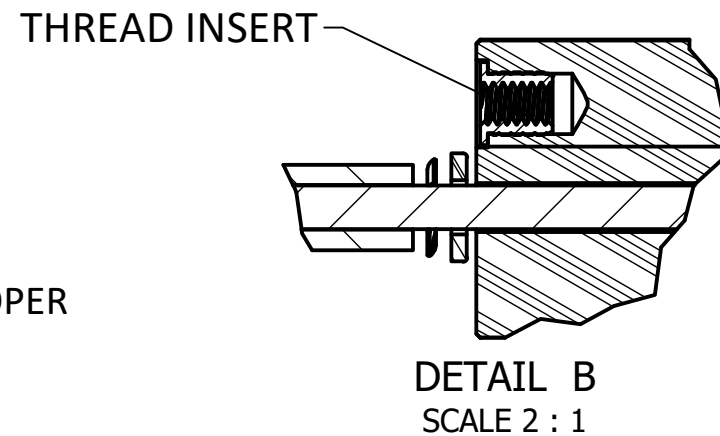
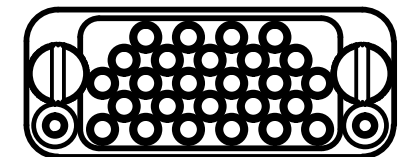
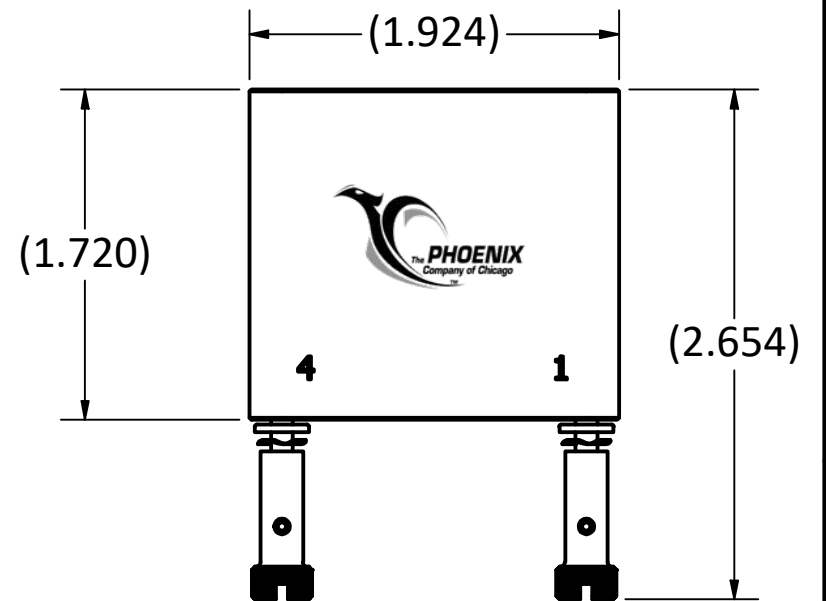
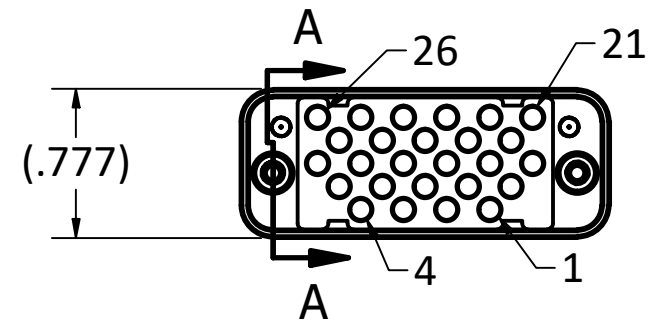
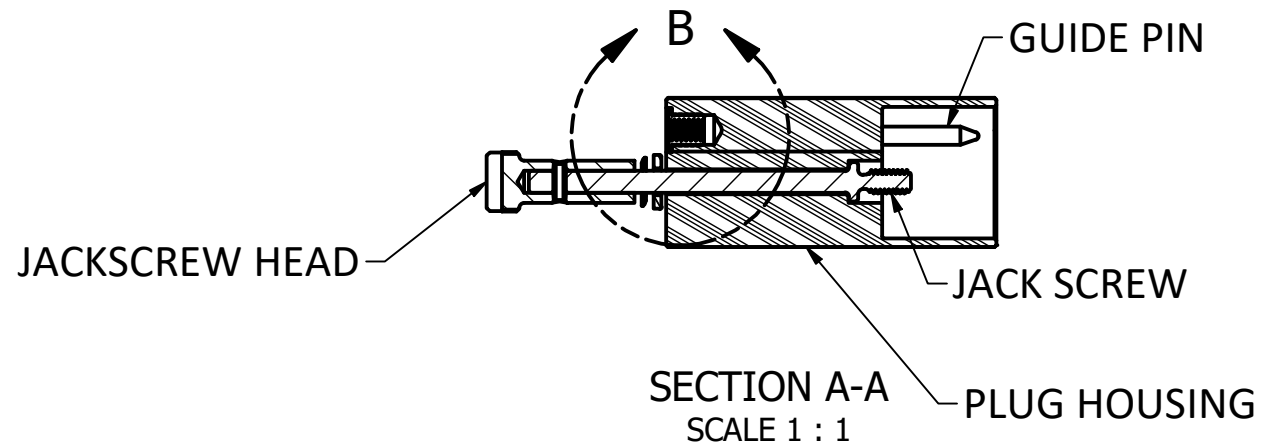


4

3

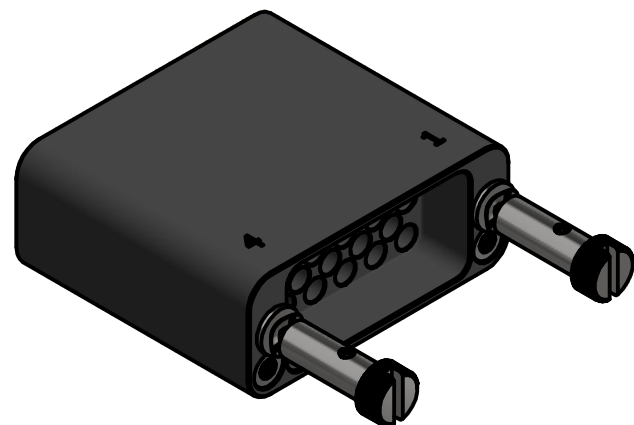
2

1



SPECIFICATIONS:

1. PART NUMBER: PRX26PDX2XA0000
2. MATERIALS:
  - a) HOUSING: ACETAL, COLOR: BLACK
  - b) HOUSING HARDWARE: STAINLESS STEEL
  - c) GUIDE PINS: STAINLESS STEEL
3. HARDWARE FINISHES: PASSIVATED  
GUIDE PINS: PASSIVATED
4. ELECTRICAL PROPERTIES:
  - a) DIELECTRIC STRENGTH: 1,000 VOLTS RMS AT SEA LEVEL;  
325 VOLTS RMS AT 70,000 FEET
  - b) INSULATION RESISTANCE: 1 MEGOHM MINIMUM
5. ENVIRONMENTAL PROPERTIES:  
OPERATING TEMPERATURE: -40° F TO +194° F ( -40° C TO +90° C )
6. A CABLE GUIDE PLATE (ORDERED SEPARATELY) MUST BE USED FOR PROPER CABLE MANAGEMENT AND MATING



SCALE 1 : 1

A	ECN 14478 RELEASE	2/10/2025	DW
REV	DESCRIPTION	DATE	APPROVAL

This drawing embodies a proprietary design of The Phoenix Company of Chicago, Inc., Naugatuck, CT 06770. All design, manufacturing, reproduction, use, sale, and other rights regarding the same are expressly reserved. The information in this drawing may be covered completely or in part by patents and/or patents pending.

WARNING - THIS DOCUMENT CONTAINS TECHNICAL DATA WHOSE EXPORT IS RESTRICTED BY THE ARMS EXPORT CONTROL ACT (TITLE 22, U.S.C., SEC 2751, ET. SEQ.) OR THE EXPORT ADMINISTRATION ACT OF 1979, AS AMENDED, TITLE 50, U.S.C., APP 2401 ET SEQ. VIOLATIONS OF THESE EXPORT LAWS ARE SUBJECT TO SEVERE CRIMINAL PENALTIES. DISSEMINATE IN ACCORDANCE WITH PROVISIONS OF DOD DIRECTIVE 5230.25.

UNLESS OTHERWISE SPECIFIED, PHOENIX WORKMANSHIP STANDARDS APPLY DIMENSIONS IN INCHES OR [METRIC]  
  
DO NOT SCALE PRINTS  
  
TOLERANCES ARE:  
FRACTIONS: ± 1/64  
DECIMALS: .XX ± .01  
.XXX ± .003  
ANGLES: ± 1/2°

32

APPROVALS	DATE
DRAWN KKC	12/10/2024
CHECKED AH	2/6/2025
QA	
MFG	
ENGINEER SJG	2/6/2025
APPROVED DW	2/7/2025

The PHOENIX Company of Chicago, Inc.

22 GREAT HILL RD., NAUGATUCK, CT 06770  
WWW.PHOENIXOFCHICAGO.COM  
PHONE: (800) 323-9562 FAX:(630) 206-1801

TITLE  
**PRX PLUG HOUSING ASSEMBLY,  
26 POSITION, SIZE 16**

SIZE B	FSCM 58167	DWG NO <b>PRX26PDX2XA0000</b>	REV A	PLATING OPT.
SCALE 1 : 1		F.S.R. #	SHEET 1 OF 1	