

4

3

2

1

B

B

SPECIFICATIONS:

1. PART NUMBER: PRX26RDX2XA0000

2. MATERIALS:

- a) HOUSING: ACETAL, COLOR: BLACK
- b) HOUSING HARDWARE: STAINLESS STEEL

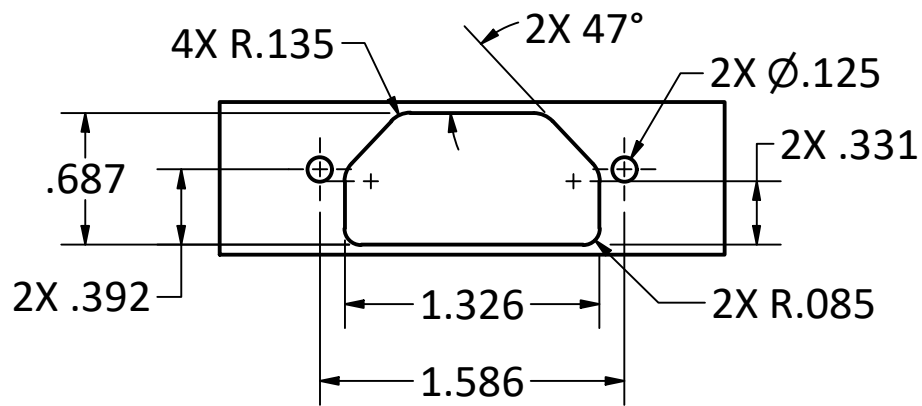
3. HARDWARE FINISHES: PASSIVATED

4. ELECTRICAL PROPERTIES:

- a) DIELECTRIC STRENGTH: 1,000 VOLTS RMS AT SEA LEVEL;
325 VOLTS RMS AT 70,000 FEET
- b) INSULATION RESISTANCE: 1 MEGOHM MINIMUM

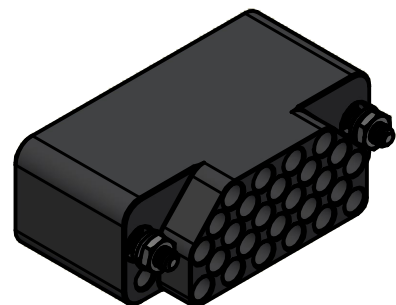
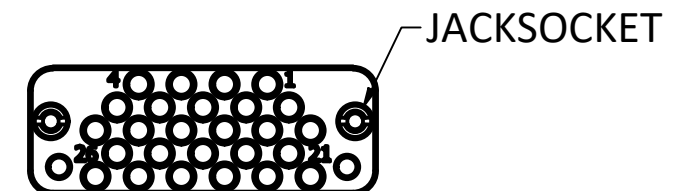
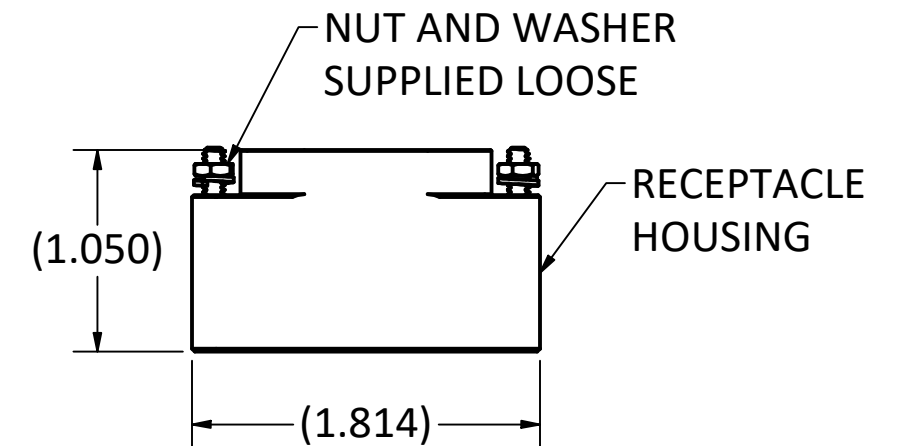
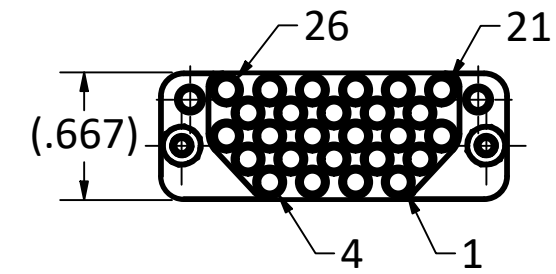
5. ENVIRONMENTAL PROPERTIES:

OPERATING TEMPERATURE: -40° F TO +194° F (-40° C TO +90° C)



RECOMMENDED PANEL MOUNTING CUT OUT

SCALE 1 : 1



SCALE 1 : 1

4

3

2

1

A

A

This drawing embodies a proprietary design of The Phoenix Company of Chicago, Inc., Naugatuck, CT 06770. All design, manufacturing, reproduction, use, sale, and other rights regarding the same are expressly reserved. The information in this drawing may be covered completely or in part by patents and/or patents pending.				WARNING - THIS DOCUMENT CONTAINS TECHNICAL DATA WHOSE EXPORT IS RESTRICTED BY THE ARMS EXPORT CONTROL ACT (TITLE 22, U.S.C., SEC 2751, ET. SEQ.) OR THE EXPORT ADMINISTRATION ACT OF 1979, AS AMENDED, TITLE 50, U.S.C., APP 2401 ET SEQ. VIOLATIONS OF THESE EXPORT LAWS ARE SUBJECT TO SEVERE CRIMINAL PENALTIES. DISSEMINATE IN ACCORDANCE WITH PROVISIONS OF DOD DIRECTIVE 5230.25.				UNLESS OTHERWISE SPECIFIED, PHOENIX WORKMANSHIP STANDARDS APPLY DIMENSIONS IN INCHES OR [METRIC]				APPROVALS DATE		The PHOENIX Company of Chicago, Inc. 22 GREAT HILL RD., NAUGATUCK, CT 06770 WWW.PHOENIXOFCHICAGO.COM PHONE: (800) 323-9562 FAX:(630) 206-1801			
								DO NOT SCALE PRINTS				DRAWN KKC 12/10/2024					
TOLERANCES ARE: FRACTIONS: ± 1/64 DECIMALS: .XX ± .01 .XXX ± .003 ANGLES: ± 1/2°				CHECKED AH 2/6/2025		SIZE FSCM DWG NO B 58167 PRX26RDX2XA0000				REV PLATING OPT. A							
MFG				ENGINEER SJG 2/6/2025						SCALE 1 : 1				F.S.R. #		SHEET 1 OF 1	
APPROVED DW 2/7/2025				QA				SHEET 1 OF 1									

A	ECN 14483 RELEASE	2/10/2025	DW
REV	DESCRIPTION	DATE	APPROVAL