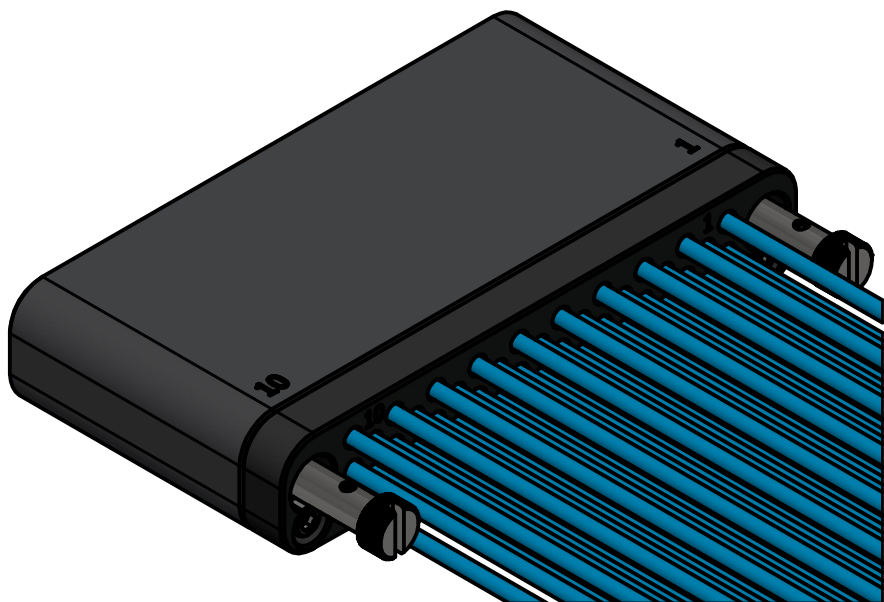
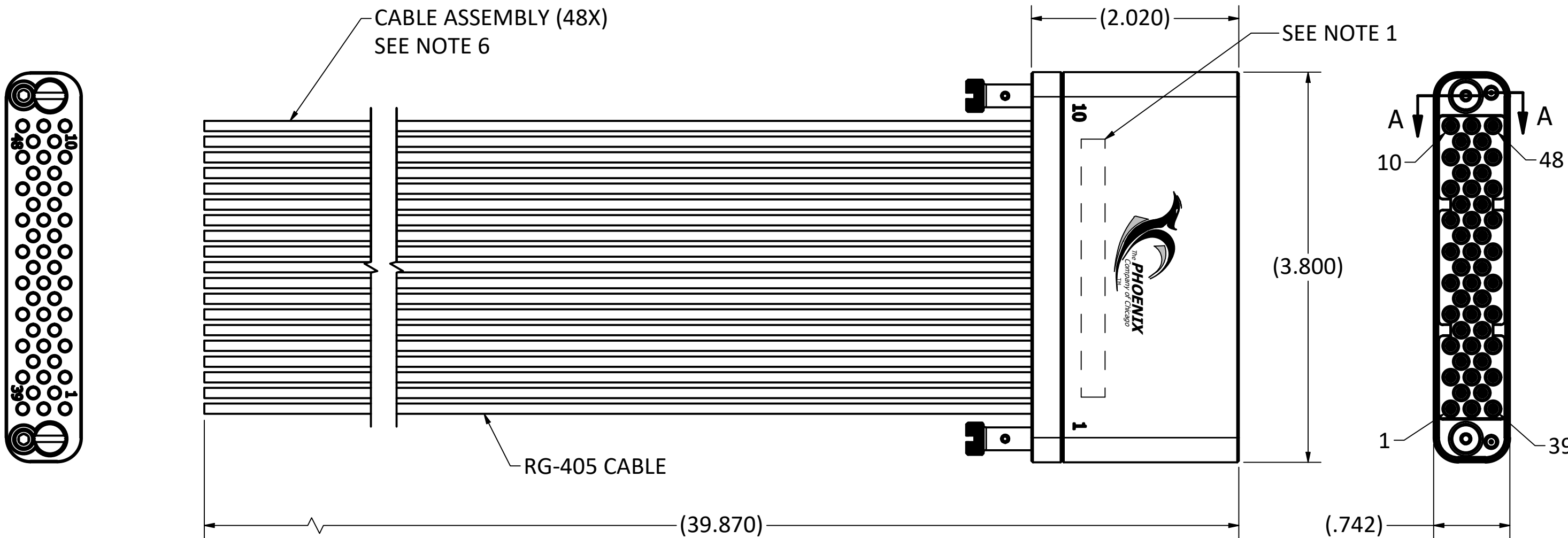
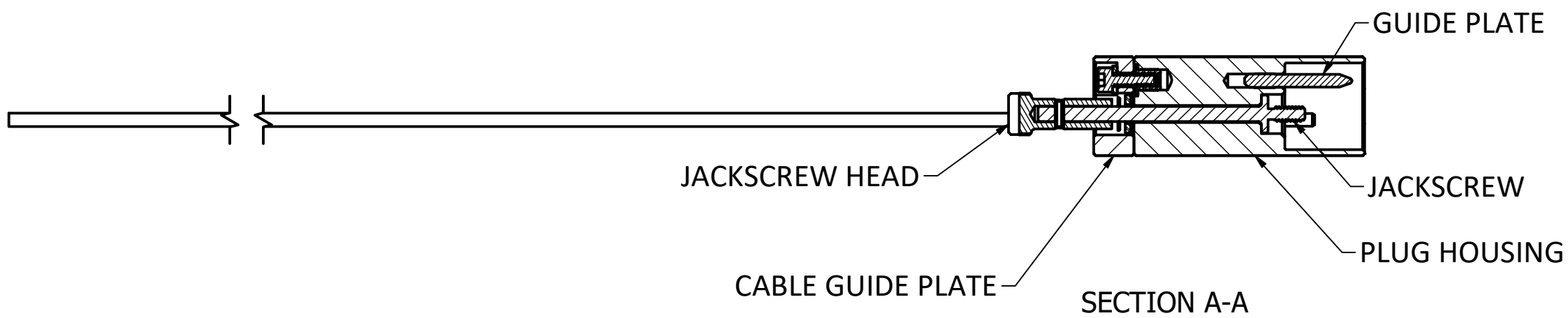


- SPECIFICATIONS:
- PART NUMBER: PX12FPDFCBC394A AND DATE CODE.
  - MATERIALS:
    - HOUSING & GUIDE PLATE: ACETAL, COLOR: BLACK.
    - HARDWARE (JACKSCREWS, JACKSCREW HEADS, SCREWS, SPRING PINS, INSERTS AND WASHERS): STAINLESS STEEL.
    - GUIDE PINS: STAINLESS STEEL.
  - FINISHES:
    - HOUSING: NONE.
    - HARDWARE: PASSIVATED.
    - GUIDE PINS: PASSIVATED.
  - ELECTRICAL PROPERTIES (APPLIES TO HOUSING ONLY):
    - DIELECTRIC STRENGTH: 1,000 VOLTS RMS AT SEA LEVEL;  
325 VOLTS RMS AT 70,000 FEET.
    - INSULATION RESISTANCE: 1 MEGOHM MINIMUM.
  - ENVIRONMENTAL PROPERTIES:  
OPERATING TEMPERATURE: -40° F TO +194° F ( -40° C TO +90° C ).
  - RF CABLE ASSY SPECIFICATIONS:
    - IMPEDANCE 50 OHMS.
    - HI-POT & CONTINUITY TEST 100%.
    - PkZ® SPECIFICATIONS PER IDS-156.
    - FREQUENCY: DC TO 6 GHz.



				<p>WARNING - THIS DOCUMENT CONTAINS TECHNICAL DATA WHOSE EXPORT IS RESTRICTED BY THE ARMS EXPORT CONTROL ACT (TITLE 22, U.S.C., SEC 2751, ET. SEQ.) OR THE EXPORT ADMINISTRATION ACT OF 1979, AS AMENDED, TITLE 50, U.S.C., APP 2401 ET SEQ. VIOLATIONS OF THESE EXPORT LAWS ARE SUBJECT TO SEVERE CRIMINAL PENALTIES. DISSEMINATE IN ACCORDANCE WITH PROVISIONS OF DOD DIRECTIVE 5230.25.</p> <p>This drawing embodies a proprietary design of The Phoenix Company of Chicago, Inc., Naugatuck, CT 06770. All design, manufacturing, reproduction, use, sale, and other rights regarding the same are expressly reserved. The information in this drawing may be covered completely or in part by patents and/or patents pending.</p>	<p>UNLESS OTHERWISE SPECIFIED, PALCO WORKMANSHIP STANDARDS APPLY DIMENSIONS IN INCHES OR [METRIC]</p> <p>DO NOT SCALE PRINTS</p> <p>TOLERANCES ARE: FRACTIONS: ± 1/64 DECIMALS: .XX ± .01 .XXX ± .003 ANGLES: ± 1/2°</p> <p>32</p>		<table><tr><td colspan="2">APPROVALS</td><td colspan="2">DATE</td></tr><tr><td>DRAWN</td><td>BP</td><td colspan="2">3/17/2025</td></tr><tr><td>CHECKED</td><td>DW</td><td colspan="2">3/28/2025</td></tr><tr><td>QA</td><td>JB</td><td colspan="2">3/28/2025</td></tr><tr><td>MFG</td><td>VL</td><td colspan="2">3/28/2025</td></tr><tr><td>ENGINEER</td><td>AH</td><td colspan="2">3/28/2025</td></tr><tr><td>APPROVED</td><td>AH</td><td colspan="2">3/28/2025</td></tr></table>		APPROVALS		DATE		DRAWN	BP	3/17/2025		CHECKED	DW	3/28/2025		QA	JB	3/28/2025		MFG	VL	3/28/2025		ENGINEER	AH	3/28/2025		APPROVED	AH	3/28/2025		<table><tr><td colspan="6"><b>The PHOENIX Company of Chicago, Inc.</b></td></tr><tr><td colspan="6">22 GREAT HILL RD., NAUGATUCK, CT 06770 WWW.PHOENIXOFCHICAGO.COM  PHONE: (800) 323-9562 FAX:(630) 206-1801</td></tr></table>						<b>The PHOENIX Company of Chicago, Inc.</b>						22 GREAT HILL RD., NAUGATUCK, CT 06770 WWW.PHOENIXOFCHICAGO.COM  PHONE: (800) 323-9562 FAX:(630) 206-1801					
									APPROVALS		DATE																																											
DRAWN	BP	3/17/2025																																																				
CHECKED	DW	3/28/2025																																																				
QA	JB	3/28/2025																																																				
MFG	VL	3/28/2025																																																				
ENGINEER	AH	3/28/2025																																																				
APPROVED	AH	3/28/2025																																																				
<b>The PHOENIX Company of Chicago, Inc.</b>																																																						
22 GREAT HILL RD., NAUGATUCK, CT 06770 WWW.PHOENIXOFCHICAGO.COM  PHONE: (800) 323-9562 FAX:(630) 206-1801																																																						
									TITLE																																													
									PX PLUG HARNESS; 48 POS, SIZE 12 PKZ® TO BLUNT CUT ON RG-405 CABLE																																													
									SIZE		FSCM		DWG NO		REV		PLATING OPT.																																					
									C		58167		PX12FPDFCBC394A		A																																							
									SCALE		1 : 1		F.S.R. #		SHEET 1		OF 1																																					