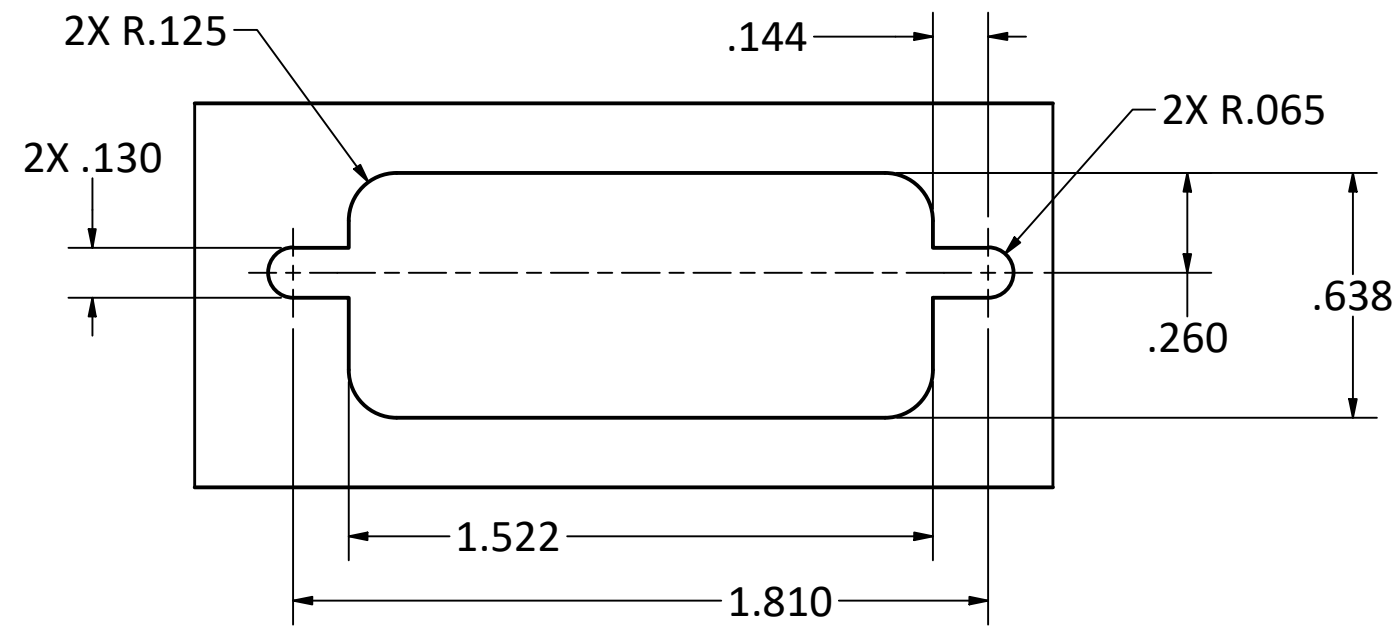
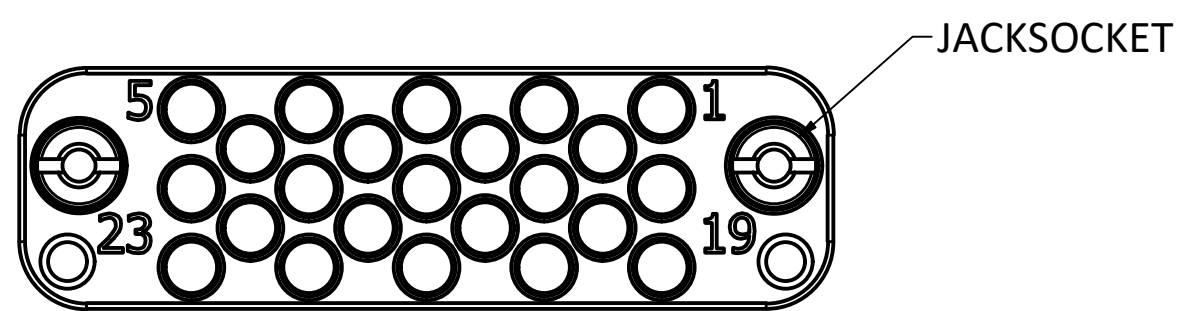
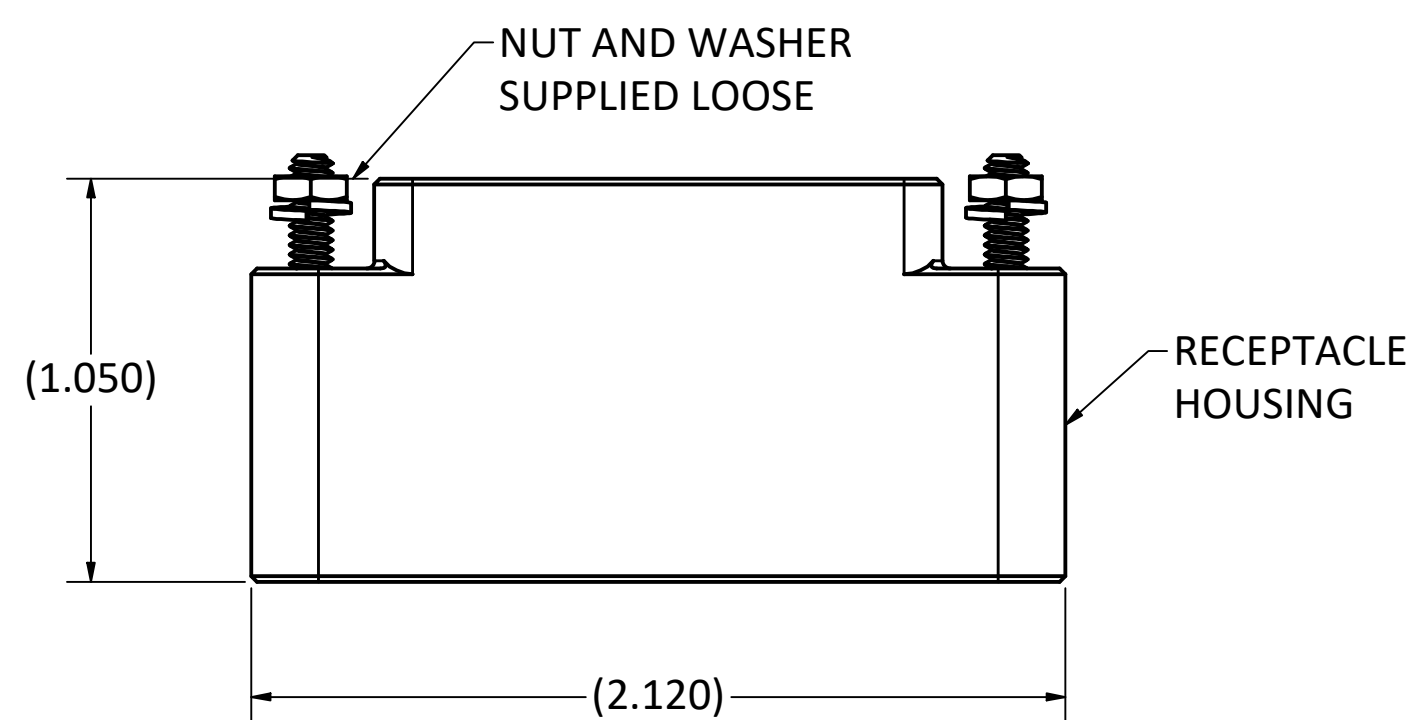
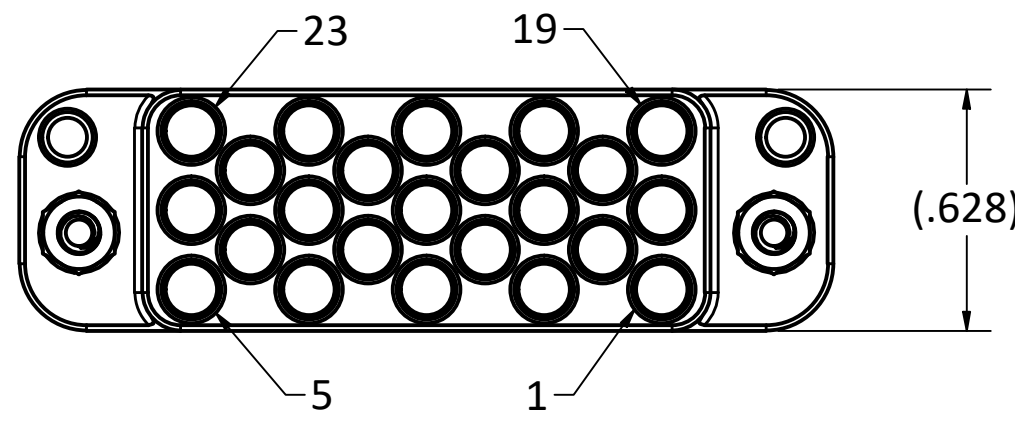


4 3 2 1

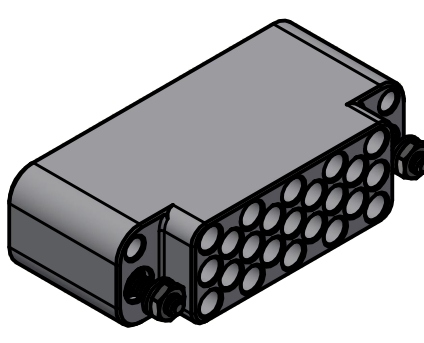
D



RECOMMENDED PANEL MOUNTING CUT OUT (MAX. THICKNESS .125)



- SPECIFICATIONS:
- 1. PART NUMBER: PX12HRDX0XA0000
 - 2. MATERIALS:
 - a) HOUSING: ACETAL, COLOR: BLACK.
 - b) HOUSING HARDWARE: STAINLESS STEEL.
 - 3. HARDWARE FINISHES: PASSIVATED
 - 4. ELECTRICAL PROPERTIES (APPLIES TO HOUSING ONLY):
 - a) DIELECTRIC STRENGTH: 1,000 VOLTS RMS AT SEA LEVEL; 325 VOLTS RMS AT 70,000 FEET.
 - b) INSULATION RESISTANCE: 1 MEGOHM MINIMUM.
 - 5. ENVIRONMENTAL PROPERTIES:
 - OPERATING TEMPERATURE: -40° F TO +194° F (-40° C TO +90° C).



SCALE 1:1

B

B

A

A

				WARNING - THIS DOCUMENT CONTAINS TECHNICAL DATA WHOSE EXPORT IS RESTRICTED BY THE ARMS EXPORT CONTROL ACT (TITLE 22, U.S.C., SEC 2751, ET. SEQ.) OR THE EXPORT ADMINISTRATION ACT OF 1979, AS AMENDED, TITLE 50, U.S.C., APP 2401 ET SEQ. VIOLATIONS OF THESE EXPORT LAWS ARE SUBJECT TO SEVERE CRIMINAL PENALTIES. DISSEMINATE IN ACCORDANCE WITH PROVISIONS OF DOD DIRECTIVE 5230.25.			The PHOENIX Company of Chicago, Inc. 22 GREAT HILL RD., NAUGATUCK, CT 06770 WWW.PHOENIXOFCHICAGO.COM PHONE: (800) 323-9562 FAX:(630) 206-1801			
				This drawing embodies a proprietary design of The Phoenix Company of Chicago, Inc., Naugatuck, CT 06770. All design, manufacturing, reproduction, use, sale, and other rights regarding the same are expressly reserved. The information in this drawing may be covered completely or in part by patents and/or patents pending.			TITLE PX 23-POS PANEL MOUNT RECEPTACLE HOUSING FOR SIZE 12 CONTACTS			
				UNLESS OTHERWISE SPECIFIED, PALCO WORKMANSHIP STANDARDS APPLY DIMENSIONS IN INCHES OR [METRIC] DO NOT SCALE PRINTS TOLERANCES ARE: FRACTIONS: ± 1/64 DECIMALS: .XX ± .01 ANGLES: ± 1/2°			SIZE C			
							FSCM 58167			
							DWG NO PX12HRDX0XA0000			
							REV A			
							PLATING OPT.			
							SCALE 2 : 1			
							F.S.R. #			
							SHEET 1 OF 1			

4 3 2 1