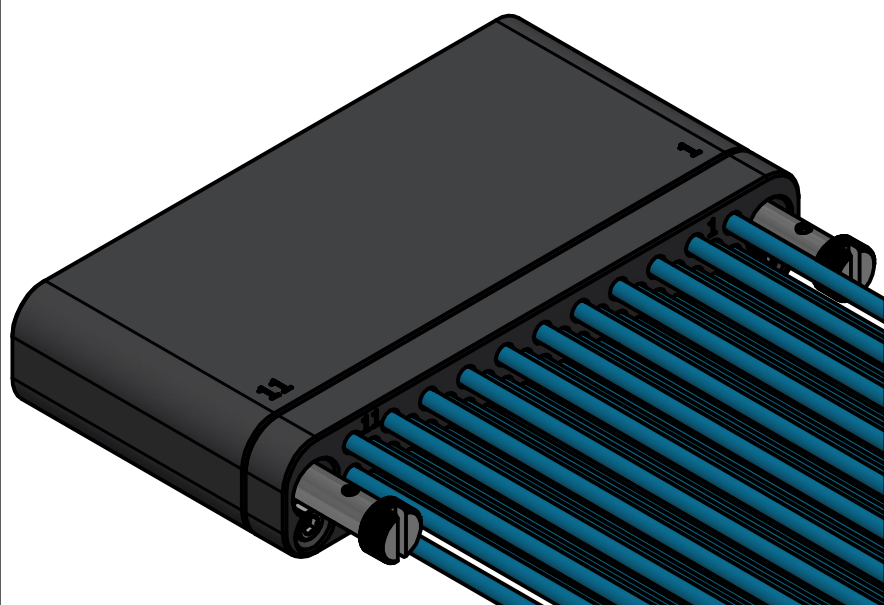
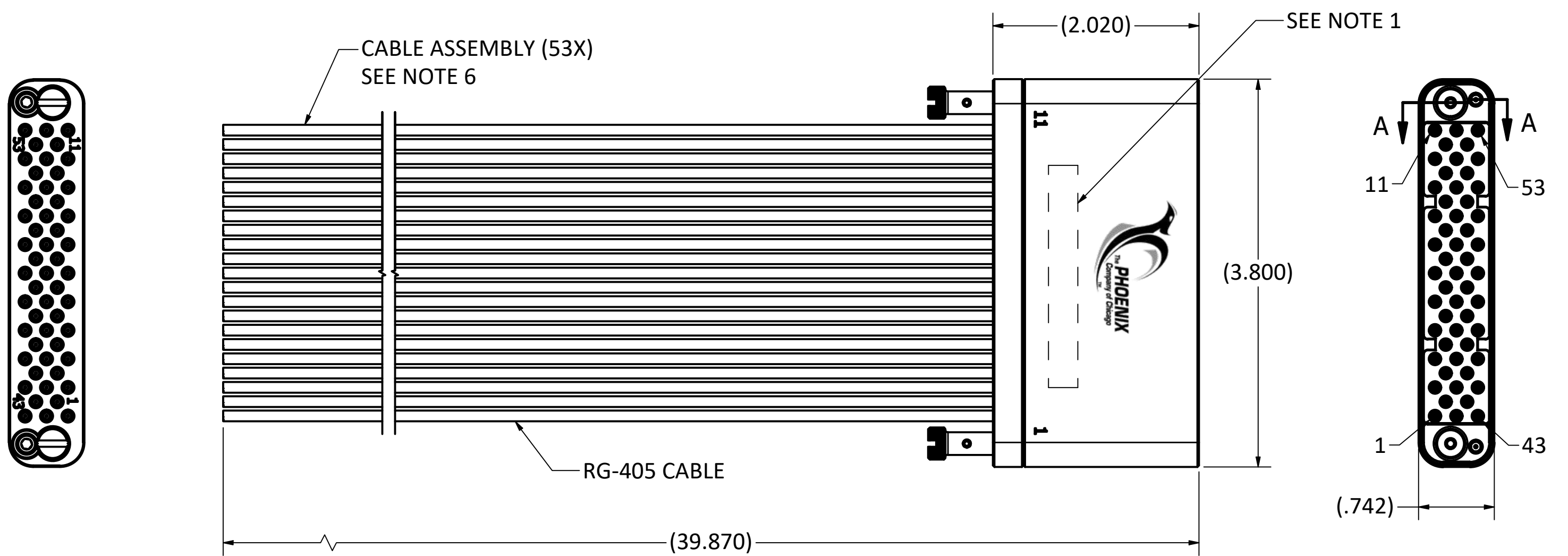
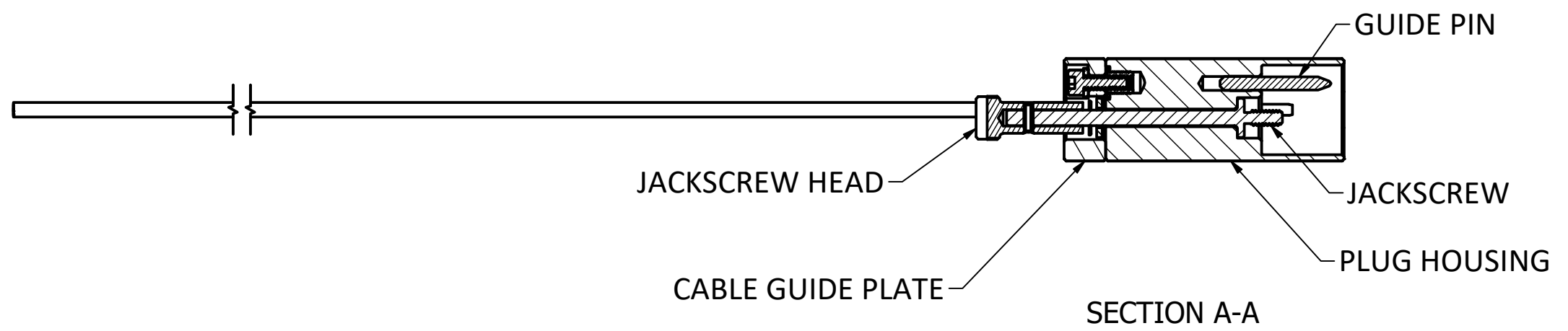


SPECIFICATIONS:

1. PART NUMBER: PX16FPD64BC394A AND DATE CODE.
2. MATERIALS:
 - a) HOUSING & GUIDE PLATE: ACETAL, COLOR: BLACK.
 - b) HARDWARE (JACKSCREWS, JACKSCREW HEADS, SCREWS, SPRING PINS, INSERTS AND WASHERS): STAINLESS STEEL.
 - c) GUIDE PINS: STAINLESS STEEL.
3. FINISHES:
 - a) HOUSING: NONE.
 - b) HARDWARE: PASSIVATED.
 - c) GUIDE PINS: PASSIVATED.
4. ELECTRICAL PROPERTIES (APPLIES TO HOUSING ONLY):
 - a) DIELECTRIC STRENGTH: 1,000 VOLTS RMS AT SEA LEVEL;
325 VOLTS RMS AT 70,000 FEET.
 - b) INSULATION RESISTANCE: 1 MEGOHM MINIMUM.
5. ENVIRONMENTAL PROPERTIES:
 - OPERATING TEMPERATURE: -40° F TO +194° F (-40° C TO +90° C).
6. RF CABLE ASSY SPECIFICATIONS:
 - a) IMPEDANCE 50 OHMS.
 - b) HI-POT & CONTINUITY TEST 100%.
 - c) PkZ® SPECIFICATIONS PER IDS-156.
 - d) FREQUENCY: DC TO 18 GHz.



MATERIAL:		<p>WARNING - THIS DOCUMENT CONTAINS TECHNICAL DATA WHOSE EXPORT IS RESTRICTED BY THE ARMS EXPORT CONTROL ACT (TITLE 22, U.S.C., SEC 2751, ET. SEQ.) OR THE EXPORT ADMINISTRATION ACT OF 1979, AS AMENDED, TITLE 50, U.S.C., APP 2401 ET SEQ. VIOLATIONS OF THESE EXPORT LAWS ARE SUBJECT TO SEVERE CRIMINAL PENALTIES. DISSEMINATE IN ACCORDANCE WITH PROVISIONS OF DOD DIRECTIVE 5230.25.</p> <p>This drawing embodies a proprietary design of The Phoenix Company of Chicago, Inc., Naugatuck, CT 06770. All design, manufacturing, reproduction, use, sale, and other rights regarding the same are expressly reserved. The information in this drawing may be covered completely or in part by patents and/or patents pending.</p>		<p>UNLESS OTHERWISE SPECIFIED, PALCO WORKMANSHIP STANDARDS APPLY DIMENSIONS IN INCHES OR [METRIC]</p> <p>DO NOT SCALE PRINTS</p> <p>TOLERANCES ARE: FRACTIONS: ± 1/64 DECIMALS: .XX ± .01 .XXX ± .003 ANGLES: ± 1/2°</p>		<p>The PHOENIX Company of Chicago, Inc.</p> <p>22 GREAT HILL RD., NAUGATUCK, CT 06770 WWW.PHOENIXOFCHICAGO.COM PHONE: (800) 323-9562 FAX:(630) 206-1801</p>																				
		<table border="1"> <thead> <tr> <th>APPROVALS</th> <th>DATE</th> </tr> </thead> <tbody> <tr> <td>DRAWN BP</td> <td>1/27/2025</td> </tr> <tr> <td>CHECKED DW</td> <td>2/25/2025</td> </tr> <tr> <td>QA JB</td> <td>2/25/2025</td> </tr> <tr> <td>MFG VL</td> <td>2/25/2025</td> </tr> <tr> <td>ENGINEER AH</td> <td>2/25/2025</td> </tr> <tr> <td>APPROVED AH</td> <td>2/25/2025</td> </tr> </tbody> </table>		APPROVALS	DATE	DRAWN BP	1/27/2025	CHECKED DW	2/25/2025	QA JB	2/25/2025	MFG VL	2/25/2025	ENGINEER AH	2/25/2025	APPROVED AH	2/25/2025	<p>TITLE</p> <p>PX PLUG HARNESS; 53 POS, SIZE 16 PKZ® TO BLUNT CUT ON RG-405 CABLE</p>								
APPROVALS	DATE																									
DRAWN BP	1/27/2025																									
CHECKED DW	2/25/2025																									
QA JB	2/25/2025																									
MFG VL	2/25/2025																									
ENGINEER AH	2/25/2025																									
APPROVED AH	2/25/2025																									
<table border="1"> <thead> <tr> <th>REV.</th> <th>DESCRIPTION</th> <th>DATE</th> <th>APPROVAL</th> </tr> </thead> <tbody> <tr> <td>A</td> <td>RELEASED PER ECN 14489</td> <td>2/25/2025</td> <td>AH</td> </tr> </tbody> </table>		REV.	DESCRIPTION	DATE	APPROVAL	A	RELEASED PER ECN 14489	2/25/2025	AH	<table border="1"> <tr> <td>SIZE</td> <td>FSCM</td> <td>DWG NO</td> <td>REV</td> <td>PLATING OPT.</td> </tr> <tr> <td>C</td> <td>58167</td> <td>PX16FPD64BC394A</td> <td>A</td> <td></td> </tr> <tr> <td>SCALE</td> <td>1 : 1</td> <td>F.S.R. #</td> <td>SHEET</td> <td>1 OF 1</td> </tr> </table>		SIZE	FSCM	DWG NO	REV	PLATING OPT.	C	58167	PX16FPD64BC394A	A		SCALE	1 : 1	F.S.R. #	SHEET	1 OF 1
REV.	DESCRIPTION	DATE	APPROVAL																							
A	RELEASED PER ECN 14489	2/25/2025	AH																							
SIZE	FSCM	DWG NO	REV	PLATING OPT.																						
C	58167	PX16FPD64BC394A	A																							
SCALE	1 : 1	F.S.R. #	SHEET	1 OF 1																						