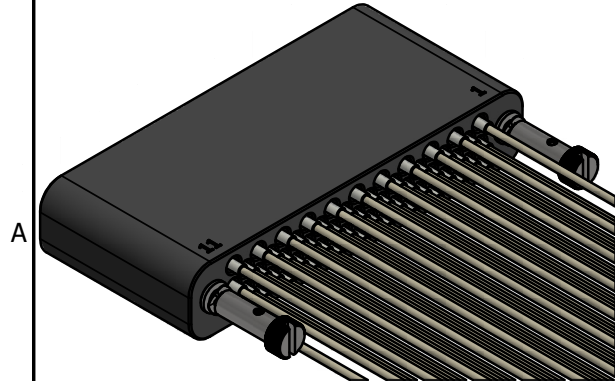
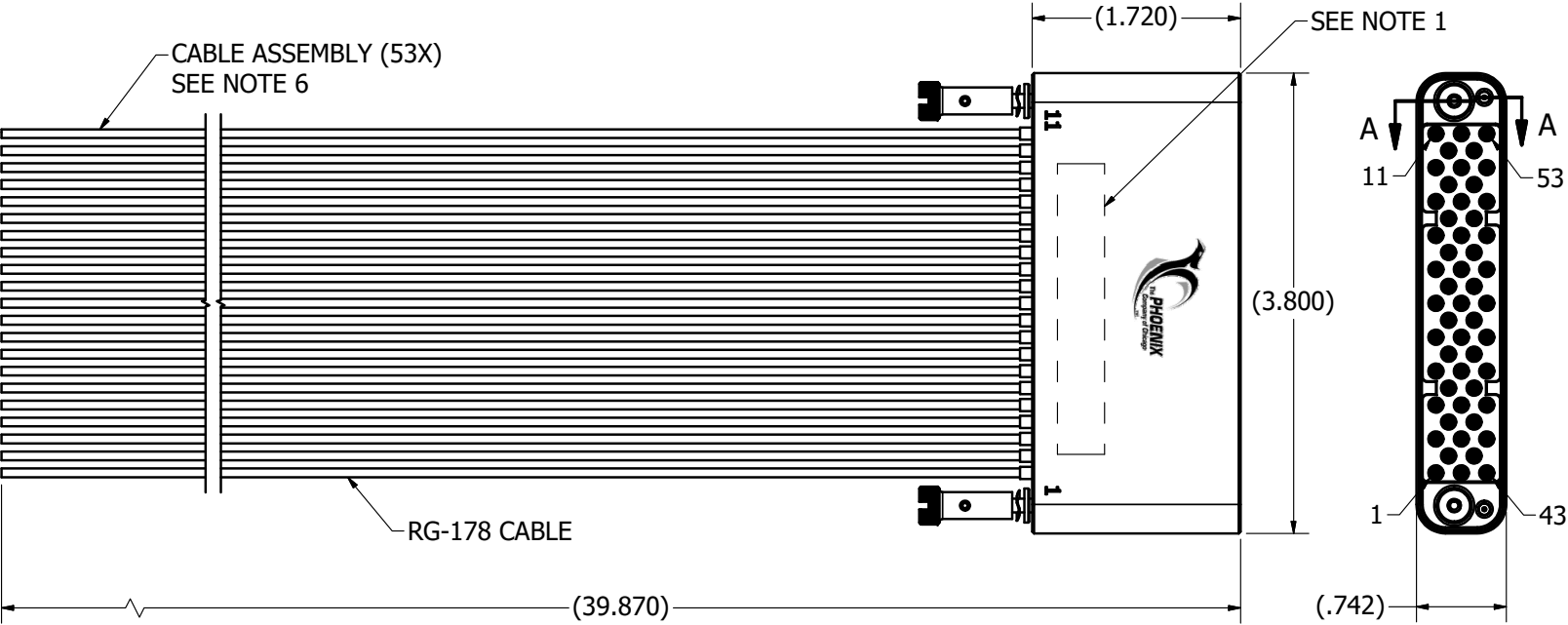
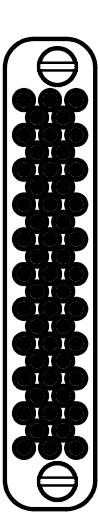
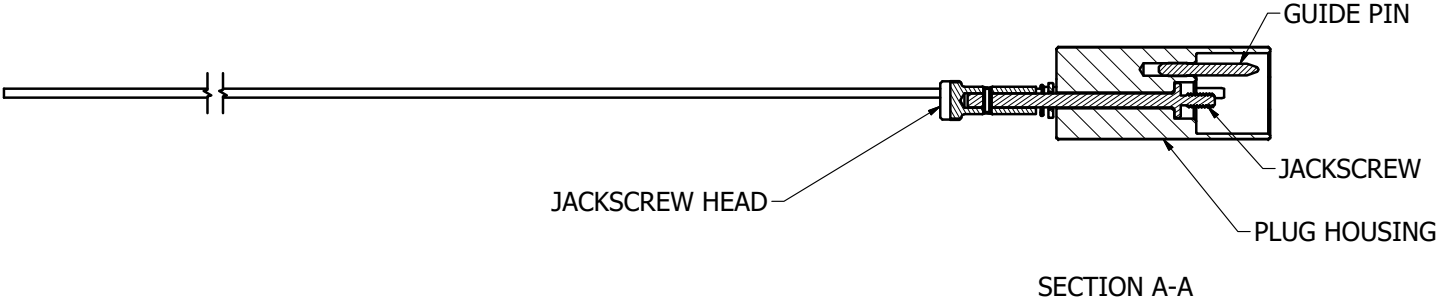


- SPECIFICATIONS:
1. PART NUMBER: PX16FPD23BC394A AND DATE CODE.
2. MATERIALS:
- a) HOUSING: ACETAL, COLOR: BLACK.
- b) HARDWARE (JACKSCREWS, JACKSCREW HEADS, SCREWS, SPRING PINS AND WASHERS): STAINLESS STEEL.
- c) GUIDE PINS: STAINLESS STEEL.
3. FINISHES:
- a) HOUSING: NONE.
- b) HARDWARE: PASSIVATED.
- c) GUIDE PINS: PASSIVATED.
4. ELECTRICAL PROPERTIES (APPLIES TO HOUSING ONLY):
- a) DIELECTRIC STRENGTH: 1,000 VOLTS RMS AT SEA LEVEL;
325 VOLTS RMS AT 70,000 FEET.
- b) INSULATION RESISTANCE: 1 MEGOHM MINIMUM.
5. ENVIRONMENTAL PROPERTIES:
- OPERATING TEMPERATURE: -40° F TO +194° F (-40° C TO +90° C).
6. RF CABLE ASSY SPECIFICATIONS:
- a) IMPEDANCE 50 OHMS.
- b) HI-POT & CONTINUITY TEST 100%.
- c) PkZ® SPECIFICATIONS PER IDS-156.
- d) FREQUENCY: DC TO 3 GHz.



MATERIAL:		WARNING - THIS DOCUMENT CONTAINS TECHNICAL DATA WHOSE EXPORT IS RESTRICTED BY THE ARMS EXPORT CONTROL ACT (TITLE 22, U.S.C., SEC 2751, ET. SEQ.) OR THE EXPORT ADMINISTRATION ACT OF 1979, AS AMENDED, TITLE 50, U.S.C., APP 2401 ET SEQ. VIOLATIONS OF THESE EXPORT LAWS ARE SUBJECT TO SEVERE CRIMINAL PENALTIES. DISSEMINATE IN ACCORDANCE WITH PROVISIONS OF DOD DIRECTIVE 5230.25.		The PHOENIX Company of Chicago, Inc.	
		This drawing embodies a proprietary design of The Phoenix Company of Chicago, Inc., Naugatuck, CT 06770. All design, manufacturing, reproduction, use, sale, and other rights regarding the same are expressly reserved. The information in this drawing may be covered completely or in part by patents and/or patents pending.		22 GREAT HILL RD., NAUGATUCK, CT 06770 WWW.PHOENIXOFCHICAGO.COM PHONE: (800) 323-9562 FAX:(630) 206-1801	
		UNLESS OTHERWISE SPECIFIED, PALCO WORKMANSHIP STANDARDS APPLY. DIMENSIONS IN INCHES OR [METRIC] DO NOT SCALE PRINTS TOLERANCES ARE: FRACTIONS: ± 1/64 DECIMALS: .XX ± .01 XXX ± .003 ANGLES: ± 1/2° 32		APPROVALS	DATE
				DRAWN BP	9/18/2024
				CHECKED AH	10/23/2025
				QA	
				MFG	
				ENGINEER	
				APPROVED	
				SIZE C	FSCM 58167
				DWG NO PX16FPD23BC394A	REV 01
				PLATING OPT.	
				SCALE 1 : 1	F.S.R. #
				SHEET 1	OF 1