

4

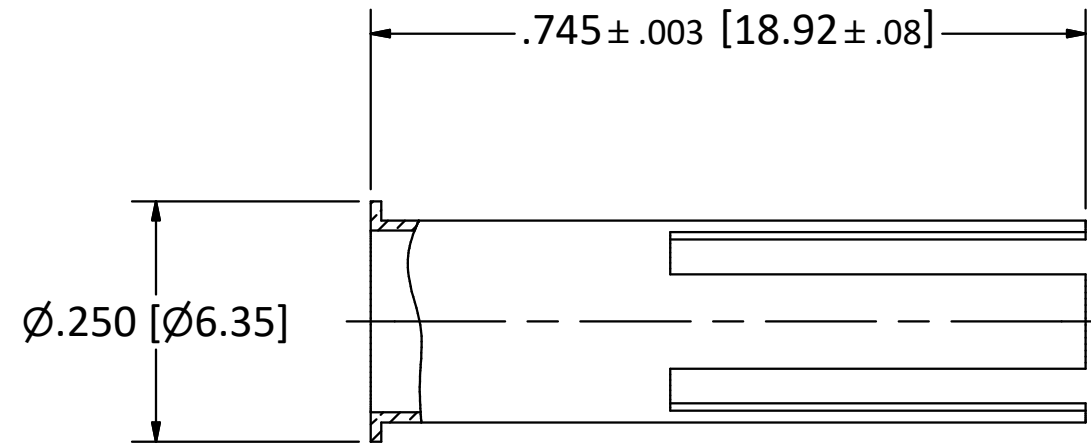
3

2

1

B

B

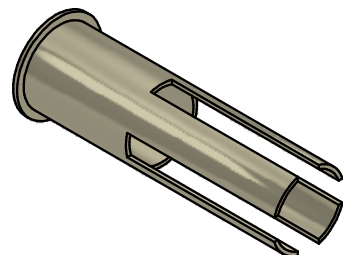


NOTES:

- 1. REPLACEMENT SLEEVE FOR EXTRACTION TOOL KIT T0100-K.
- 2. FOR EXTRACTION OF SIZE-8 CONTACTS FROM DIN 41612 HOUSINGS.

A

A



SCALE 2.5 : 1

4

3

2

1

<p>This drawing embodies a proprietary design of The Phoenix Company of Chicago, Inc., Naugatuck, CT 06770. All design, manufacturing, reproduction, use, sale, and other rights regarding the same are expressly reserved. The information in this drawing may be covered completely or in part by patents and/or patents pending.</p>				<p>WARNING - THIS DOCUMENT CONTAINS TECHNICAL DATA WHOSE EXPORT IS RESTRICTED BY THE ARMS EXPORT CONTROL ACT (TITLE 22, U.S.C., SEC 2751, ET. SEQ.) OR THE EXPORT ADMINISTRATION ACT OF 1979, AS AMENDED, TITLE 50, U.S.C., APP 2401 ET SEQ. VIOLATIONS OF THESE EXPORT LAWS ARE SUBJECT TO SEVERE CRIMINAL PENALTIES. DISSEMINATE IN ACCORDANCE WITH PROVISIONS OF DOD DIRECTIVE 5230.25.</p>				Filename: ver2\Autodesk Inventor Data Base\Tooling\T0100-7-CU.idw				<p>The PHOENIX Company of Chicago, Inc. 22 GREAT HILL RD., NAUGATUCK, CT 06770 WWW.PHOENIXOFCHICAGO.COM PHONE: (800) 323-9562 FAX:(630) 206-1801</p>							
								UNLESS OTHERWISE SPECIFIED, PHOENIX WORKMANSHIP STANDARDS APPLY DIMENSIONS IN INCHES OR (METRIC)		APPROVALS						DATE		<p>TITLE REPLACEMENT SLEEVE FOR DIN 41612 CONTACT EXTRACTION TOOL KIT T0100-K</p>	
DO NOT SCALE PRINTS		DRAWN		9/21/2020		CHECKED		9/22/2020		SIZE		FSCM		DWG NO		REV			
TOLERANCES ARE: FRACTIONS: $\pm 1/64$ DECIMALS: $.XX \pm .01$ $.XXX \pm .003$ ANGLES: $\pm 1/2^\circ$		QA				MFG				B		58167		T0100-7		A			
<p>32</p>		ENGINEER		9/21/2020		APPROVED		9/22/2020		SCALE		5 : 1		F.S.R. #		SHEET		1 OF 1	
A		ECN 13847		9/22/20		JEM													
01		PRELIMINARY		9/21/20		BGW													
REV.		DESCRIPTION		DATE		BY													